

Medtronic

Compatible components reference card







Model 53401
Single Chamber Temporary
External Pacemaker

Surgical cables

Model	Type	Channel	Length
 5487L Patient Cable	Disposable	A or V	12 ft
 5832S Bipolar Surgical Cable	Reusable	A or V	12 ft
 5833SL Bipolar Surgical Cable	Disposable	A or V	12 ft

L = Long, S = Small Clip, A = Atrial, V = Ventricle

Patient cables

Model	Type	Channel	Length
	Reusable	A	12 ft
	Reusable	V	12 ft
	Disposable	A	12 ft
	Disposable	V	12 ft

L = Long, S = Small Clip, A = Atrial, V = Ventricle

Other

Model	Type
	Replacement covers (main cover and rapid atrial pacing cover) Quantity: 3
	IV pole replacement hook, and knobs
	Carrying case

L = Long, S = Small Clip, A = Atrial, V = Ventricle

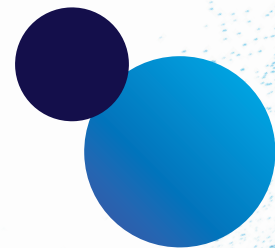


Temporary pacing leads

StreamLine™ Temporary Pacing Leads/Wires

Model	Type	Size
	6491F	Unipolar, pediatric 19 mm
	6492F	Unipolar, atrial 25 mm
	6494F	Unipolar (2 per pack) 16 mm
	6495F	Bipolar, coaxial 22 mm
	6500F	Unipolar, premium 16 mm

L = Long, S = Small Clip, A = Atrial, V = Ventricle



General Indication statements:

For a listing of indications, contraindications, precautions, warnings, and potential adverse events, please refer to the Instructions for Use. Consult instructions for use on this website <http://manuals.medtronic.com/manuals/main/region>. Manuals can be viewed using a current version of any major Internet browser. For best results, use Adobe Acrobat Reader® with the browser.

Medtronic

Medtronic Canada

99 Hereford Street
Brampton, Ontario, L6Y 0R3
Toll-free: 800.268.5346
Tel: 905.460.3800

medtronic.ca

©2024 Medtronic. All rights reserved. Medtronic, Medtronic logo and Engineering the extraordinary are trademarks of Medtronic.
™*Third party brands are trademarks of their respective owners. All other brands are trademarks of a Medtronic company.
UC201703700eEC CA-CTL-0285-E Rev. 02/2024