

CLEAR VISION TO ELEVATE YOUR OR.

EleVision™ HD 2 platform

Value analysis brochure



Medtronic
Further. Together

SEE THE VALUE OF A CUSTOMIZABLE SOLUTION

Our EleVision™ HD 2 platform can help you optimize care and its modularity simplifies the purchasing process.

Surgeons need clear vision in the OR. They also want options that support their need for flexibility. A tool that allows for clear sight and adaptability to a versatile arsenal of cutting-edge technology. That's what the EleVision™ HD 2 platform provides.

Our platform offers real clinical value by letting you customize and create your own solution. That helps ensure clarity and supports the ability to use a comprehensive tool portfolio with:

- Internal video recording
- Advanced imaging modes
- Chip-on-tip and rod-lens camera technologies

The EleVision™ HD 2 platform offers exceptional visualization with:

- Natural colors^{1,2,†,‡}
- Real-time digital removal of surgical smoke^{3,‡,§}
- Advanced imaging modes that improve visualization and characterization of critical structures during bowel dissection^{1,2,‡,Ω}

Our EleVision™ HD 2 platform empowers you with expert support from our field sales professionals and technical support teams. As your partner in patient care, we remain committed to helping you achieve your clinical and economic goals.

† Average scores with 19 surgeons on image color and sharpness were 4.6 and 4.7 out of 5, respectively.

‡ Based on preclinical or animal studies. Results may not correlate to performance in humans.

§ Compared to a traditional rod-lens laparoscope when used in a laparoscopic cholecystectomy and a laparoscopic TAPP hernia repair.

Ω Compared to an unaltered white light image. 13 out of 19 surgeons surveyed agreed.



TABLE OF CONTENTS

Executive overview

Features and benefits

Introducing TipVision™
videoscope

Competitive comparison

Sterilization guide

Service plan

YOUR SINGLE SURGICAL SOLUTION

Our products can assist you in optimizing all aspects of laparoscopic procedures:

- Visualization
- Trocars
- Hand instruments
- Ligation
- Stapling
- Energy
- Smoke evacuation
- Wound closure

OPTIMIZE YOUR SURGICAL EXPERIENCE

With a simplified and streamlined design,⁴ the EleVision™ HD 2 platform components can enhance surgeons ability to see and respond to a variety of surgical needs. Those features include:

Monitor

- Displays 1080p HD video

CMOS technology camera

- Captures native, HD images
- Maintains sharpness
- Provides better resolution^{10,†}
- Enables color enhancement that may improve identification and characterization of critical structures^{5,‡}

LED light source

- Features 30,000 hour lifespan⁶
- Delivers 60 times more life than a Xenon™ light bulb⁶

Laparoscope

Features a laser-welded design that lasts for more than 2,000 autoclave cycles⁷

50 L insufflator

- Simple-to-use pressure and flow settings⁸
- Easy-to-read display of actual pressure and flow values⁸
- Individual programming options^{8,†,‡}
- Offers gas heating to target a 37 C body temperature⁹

Laparoscopic suction irrigation pump

- Radio Frequency Identification (RFID) control
- 2.0 l/min suction irrigation



† Relative to CCD sensors.

‡ As evaluated in a clinical study with the FICE system (Fujinon™ Corporation) in the identification of gastroduodenal lesions.

THE FREEDOM OF CONSISTENT, CLEAR VISUALIZATION

Dual chip-on-tip technology

It's the little things that make a big impact. That's true for our TipVision™ videoscope — the first videoscope with dual chip-on-tip technology that's fog-free^{3,†,‡} and focus-free.[§] It provides the clear, consistent visualization surgeons need. With improved image quality, ergonomics and usability, the TipVision™ videoscope is durable which adds to its overall economic value. And it has less intraoperative disruptions from fog and improved optical focus.^{3,†,‡,Ω}

Our TipVision™ videoscope contains a CMOS sensor and integrated LED lights that's protected by our unique scratch-free sapphire glass — enabling more consistent performance over the product lifecycle.^{3,†,‡}

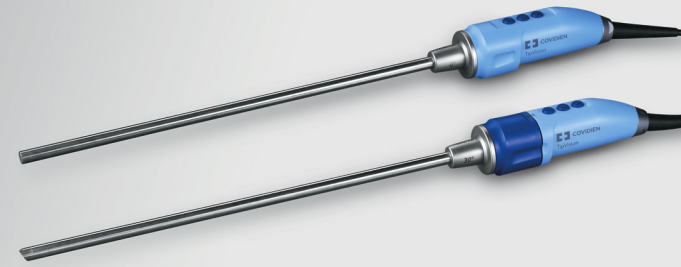
† Compared to a traditional rod-lens laparoscope when used in a laparoscopic cholecystectomy and a laparoscopic TAPP hernia repair.

‡ Based on preclinical or animal studies. Results may not correlate to performance in humans.

§ TipVision™ videoscope has fixed depth-of-field of 20 mm-200 mm with most optimal image between 30 mm and 60 mm.

Ω TipVision™ videoscope reduced total procedure time decreased by 16% and 10%, respectively when compared to a traditional rod-lens laparoscope.

†† Compared to traditional rod-lens designs with light fibers and an external light source.



Chip-on-tip technology that's:

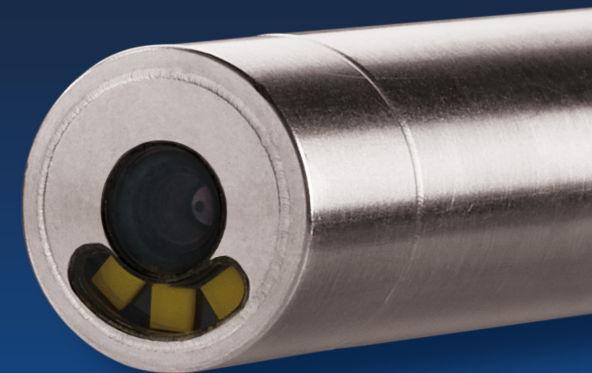
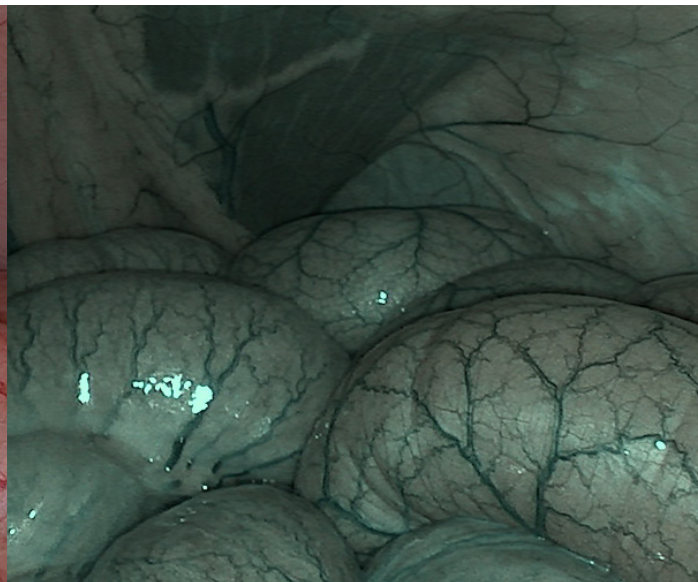
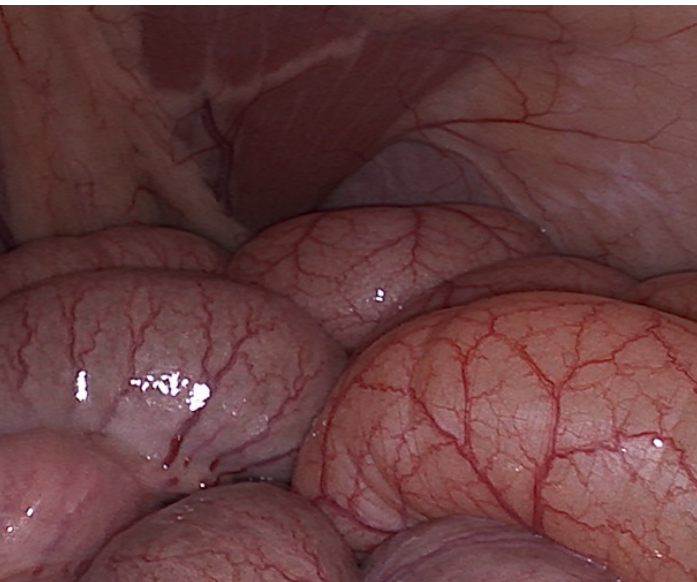
- Focus-free[§]
- Broad depth of field ranging from 20 mm–200 mm
- Clear, consistent fog-free image^{3,†,‡}

Sapphire glass over the light output at the distal tip that's:

- Scratch resistant and more durable
- Protective of LED lights for consistent performance over the product's lifecycle^{11,††}

Integrated LED lights with:

- Automatic light adjustment with less glare
- No light post or cable
- Consistent brightness over the product's lifecycle^{11,††}



PLATFORM COMPETITIVE COMPARISON†

Our adaptable EleVision™ HD 2 platform provides a sharp image and best-in-class resolution.^{1,2,10,‡,§,Ω} See how our diversity stacks up.



Company	Model	Chip Technology	Light Source	Image enhancement mode	Camera head options	Camera head autoclave/Sterrad™*	Video capturing on USB
Medtronic	EleVision™ HD 1 system	CMOS	LED	Selective Color Enhancement Smoke reduction	N/A	Sterrad™*	No
	EleVision™ HD 2 platform	CMOS	LED	Selective Color Enhancement & Smoke reduction Vessel View and Deep Tissue View TipVision™ videoscope	EleVision™ HD 1 EleVision™ HD 2	Sterrad™* Sterrad™* Autoclave	Yes
Storz	IMAGE 1 S™*	CCD	LED	Clara, Spectra, Chroma	HD, 3D, JCG	Both available	Yes
Stryker	1588 AIM with Spy-Phi™*	CMOS	LED	Clarity	HD	Both available	No
	1488 AIM with Spy-Phi™*	CMOS	LED	NA	HD	Both available	No
Olympus	Visera™ Elite II	CMOS	LED XENON™*	NBI	HD, 3D, chip-on-tip, ICG	Both available	No
	Evis™ Exera III	CCD	LED XENON™*	NBI	HD, 3D, chip-on-tip, ICG, Gastro, Broncho	Both available	No

† Based on competitive devices' websites and IFUs; accessed in May 2020.

‡ Average scores with 19 surgeons on image color and sharpness were 4.6 and 4.7 out of 5, respectively.

§ Based on preclinical or animal studies. Results may not correlate to performance in humans.

Ω Compared to CCD sensors..

STERILIZATION GUIDE†

PRODUCT	CLEANING/DISINFECTION	STEAM STERILIZATION	PLASMA STERILIZATION
Laparoscopes	Manual Cleaning Cydezime™ Enzol™	134° C (273.2° F) 5 min	STERRAD™ 50, 1008,200, NX, 100NX
	Manual Disinfection Cidex™ OPA		
	Automated cleaning Neodisher™ Mediclean Forte 0.5%		
Light guides	Manual Cleaning Cydezime™ Enzol™	134° C (273.2° F) 5 min	STERRAD™ 100S long cycle STERRAD™ 200 short and long cycle
	Manual Disinfection Cidex™ OPA		
	Automated cleaning Neodisher™ Mediclean Forte 0.5%		
Camera head	Manual Cleaning Cydezime™ Enzol™	N/A	STERRAD™ 100S short cycle
	Automated cleaning Neodisher™ Mediclean Forte 0.5%		
Reusable insufflation tubing†	Manual cleaning Neodisher™ Mediclean 2% or equivalent	132–134° C 5 min	N/A
	Automated cleaning Vario – Miele or equivalent Lysetol 8% or equivalent		

† Refer to user's guide for complete instructions.



YOUR INVESTMENT PROTECTION

EleVision™ HD 2 platform

Our annual service warranty terms† include:

- Unlimited repairs (scopes and original spare parts included)
- Unlimited phone support
- Unlimited software support
- Priority shipment of loaner equipment
- Full labor coverage and travel cost coverage
- Annual system check-up

Exclusions: Damaged components due to misuse do not qualify under this service program.

†Refer to the full terms and conditions contained in the service plan.



Ordering Information

Camera control unit

ELEVCCU	EleVision™ Camera Control Unit, image capturing, SCE, SR
ELEVCCUVR	EleVision™ Camera Control Unit, image and video recording

Videoscopes

ELEVTV1000	TipVision™ videoscope, 10 mm, 0 degree
ELEVTVTRAY	TipVision™ videoscope sterilization tray
ELEVTV1030	TipVision™ videoscope, 10 mm, 30 degree

Camera heads

95–3901	Native Full HD Camera Head 1 chip CMOS with parfocal zoom, f = 14.25–28 mm, hydrogen peroxide gas plasma sterilization compatible
95–3906	EleVision™ HD 2 platform camera head

Laparoscopes

11.0031A	10.0 mm, HD laparoscope, 344 mm, 0 degrees
11.0041A	10.0 mm, HD laparoscope, 344 mm, 45 degrees
11.0043A	10.0 mm, HD laparoscope, 344 mm, 30 degrees
11.0055A	5.0 mm, HD laparoscope, 312 mm, 0 degrees
11.0057A	5.0 mm, HD laparoscope, 312 mm, 30 degrees

Light sources and light guides

05.0740LED	LED Light Source
05-0760LED	LED Light Source (CRI >92)
05.0085L.HT	3.5 x 3000 mm light guide recommended for Xenon™ light sources
05.0087L	4.8 x 3000 mm light guide for LED light source
05.0088l.ht	3.5 x 2300 mm light guide recommended for Xenon™ light sources > 300
05.0090L	4.8 x 2300 mm light guide for LED light source
05.0090l.ht	4.8 x 2300 mm light guide recommended for Xenon™ light sources
05.0085L.HT	3.5 x 3000 mm light guide recommended for Xenon™ light sources
05.0085L.HT	3.5 x 3000 mm light guide recommended for Xenon™ light sources

Monitors

MLW-2623C-DC	26" HD Monitor
HME2C26	26" HD Monitor
MLW-3225C	32" Monitor Ikegami

Trolleys

KU–5576–902	Equipment cart, one monitor (max 14 kg)
KU–5167–902	Equipment cart for two monitors (fixed arm, max 14 kg. Flexible arm, max 10 kg)
KU–7211–902	Equipment cart for one monitor (max 18 kg)

1. Based on internal test report #RE00176521, EleVision™ HD 2 platform usability validation lab. February 2019. Data on file.
2. Based on internal test report #RE00176522, EleVision™ HD 2 platform usability validation lab. February 2019. Data on file.
3. Based on internal report #RE00253641, TipVision™ videoscope preclinical performance report. March 2020. Data on file.
4. Based on internal test report #RE00246399, EleVision™ HD 2 platform summative usability validation lab. February 2019. Data on file.
5. Coriat R, Chrysostalis A, Zeitoun JD, et al. Computed virtual chromoendoscopy system (FICE): A new tool for upper endoscopy. *Gastroenterol Clin Biol.* 2008;32(4):363–369.
6. Based on internal report #VD1091, Rev 03. Scholley. April 2018. Data on file.
7. Bohusch H, Kubon M. IP clearance statement, chip-in-tip laparoscope, Rev 03. Schoelly. March 2020. Data on file.
8. Based on internal test report FM134, Rev 0.4 World of Medicine. Schwab. Usability review of FM134. May 2018. Data on file.
9. Pankalla S. Verification report. Functional performance verification for the tube set ST 280. *World of Medicine.* July 2017.
10. Weber K. New trends and implementations in imaging technology for the future of live production. March 2013.
11. Based on internal report #VD2124, Rev 00. Scholley. June 2019. Data on file.

Photo credit Getty Images

© 2020 Medtronic. All rights reserved. Medtronic, Medtronic logo and Further, Together are trademarks of Medtronic.™™ Third party brands are trademarks of their respective owners. All other brands are trademarks of a Medtronic company. 11/2020–US–NI–2000014–[WF# 3687020]

555 Long Wharf Drive 800.722.8772
New Haven, CT 06511 508.261.8000

REALIZE THE VALUE.
FOR PATIENTS
AND YOUR HOSPITAL.

Contact your local sales representative to learn more about the EleVision™ HD 2 platform.
[medtronic.com/hd2](https://www.medtronic.com/hd2)

Medtronic