

## SynchroMed II - Post MRI Pump Interrogation Guidelines

For pumps programmed to deliver at least 0.048 ml/day, post MRI interrogation will typically confirm that proper pump functionality has resumed within 20 minutes of completion of the MRI procedure. The following pump interrogation guidelines should be used to determine whether the pump has resumed proper function.

1. At least 20 minutes after completing MRI exposure, interrogate the pump using the clinician programmer and select the check box to download event logs (see Figure 1). If the event log states “*Motor Stall Occurred*” and “*Motor Stall Recovery Occurred*”, normal function of the pump has returned (see Figure 2).
2. If event log **does not** show stall and recovery, wait 20 minutes after the initial interrogation, re-interrogate the pump using the clinician programmer, and review the event logs again. (This will address the potential for event logging delays due to Electromagnetic Interference (EMI) from the MRI magnetic field.
  - If the event log states “*Motor Stall Occurred*” and **does not** state “*Motor Stall Recovery Occurred*”, there is a potential for an extended motor stall due to gear binding. Contact Medtronic Technical services for further troubleshooting.
  - In all other cases, the pump has resumed its normal operation.

Figure 1

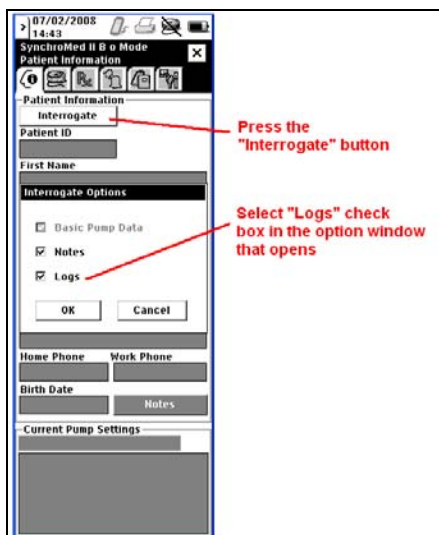


Figure 2

