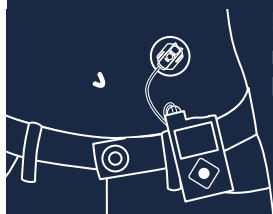


## Medical emergency card



I am wearing a required medical device prescribed by my physician.

**Medtronic**

### In an emergency, please contact:

physician name:

phone number:

emergency contact:

phone number:

### I have diabetes.

If my behavior is peculiar, if I appear intoxicated, or if I am unconscious, it may be a result of severe low blood sugar.





### I am not intoxicated. Call a medical team for assistance.

If I am awake and able to swallow, give me a source of sugar (for example: juice, candy, non-diet soft drink).

Do not try to give me food or drink if I am unconscious.

### Healthcare Professionals

I am wearing an external insulin pump.

- The pump is delivering fast-acting insulin at a constant rate.
- To stop insulin delivery on the pump:
  - Press any button to wake the pump.
  - Press the Menu button .
  - Press the highlighted button shown on the screen to unlock the pump.
  - Press  to select **Suspend Delivery**.
  - Press the Right button  to highlight **Yes**.
  - Press  to suspend insulin delivery.
- **Do not** remove the pump battery.
- **Do not** remove the pump without medical consent.
- If the pump is alarming, follow the instructions on the pump screen or call the local Medtronic Diabetes representative listed below.

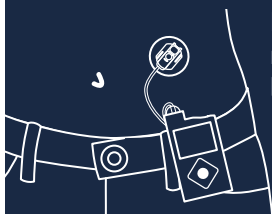
**Medtronic Japan 24Hr. Support Line 0120-56-32-56**

This number is for Japan domestic calls only.

For international contacts, please refer to

<https://www.medtronicdiabetes.com/>.

## Airport information



I am wearing a required medical device prescribed by my physician.

**Medtronic**

## Healthcare Professionals

- Your pump should not go through the x-ray machine that is used for carry-on or checked luggage.
- The full body scanner is also a form of x-ray. If you choose to go through the full body scanner, you will need to disconnect and remove your insulin pump, and, if using continuous glucose monitoring (CGM), remove your sensor and transmitter prior to the scan.
- Your infusion set should be disconnected at your site when going through the full body scanner.
- To avoid removing your devices, you should request an alternative screening process that does not use x-ray.
- Your insulin pump, infusion set, reservoir, and CGM system can withstand exposure to airport metal detectors used at airport security checkpoints.

## Patient Information

my name:

my address:

home phone number:

## Medical Device Information

medical device type:

device serial number: