

MAKING MORE OF THE EVERYDAY



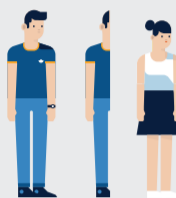
PARKINSON'S DISEASE FACTS AND FIGURES¹



A chronic and progressive movement disorder, in which symptoms continue and worsen over time.



As the disease progresses, the amount of dopamine produced in the brain decreases, leaving a person unable to control movement normally.



Men are one and a half times more likely to have Parkinson's than women.



Exact cause of Parkinson's remain unknown. Experts say disease is caused by a combination of genetic and environment factors, which may vary from person to person.



>6.3M PEOPLE

have Parkinson's disease worldwide

↑ This number will be **MORE THAN DOUBLE BY 2040**

↓ **1/10** people with Parkinson's are **under 50 years old**

PARKINSON'S DISEASE SYMPTOMS AND PROGRESSION^{1,2}

Primary symptoms of Parkinson's



Tremor of the hands, arms, legs, jaw and face



Bradykinesia or **slowness** of movement



Rigidity or stiffness of the limbs and trunk



Postural instability or impaired balance and coordination

Disease progression



1. One side of the body affected



2. Both sides affected, but balance intact



3. Walking or standing difficult without assistance



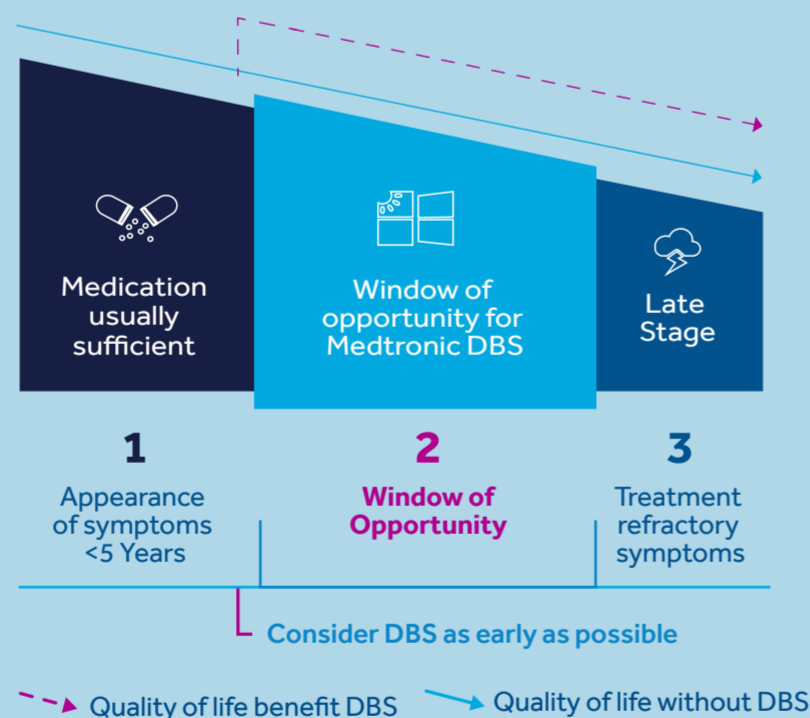
4. Balance impaired, but not independent functioning



5. Bedridden or wheelchair bound without assistance

WHEN TO CONSIDER DBS THERAPY*

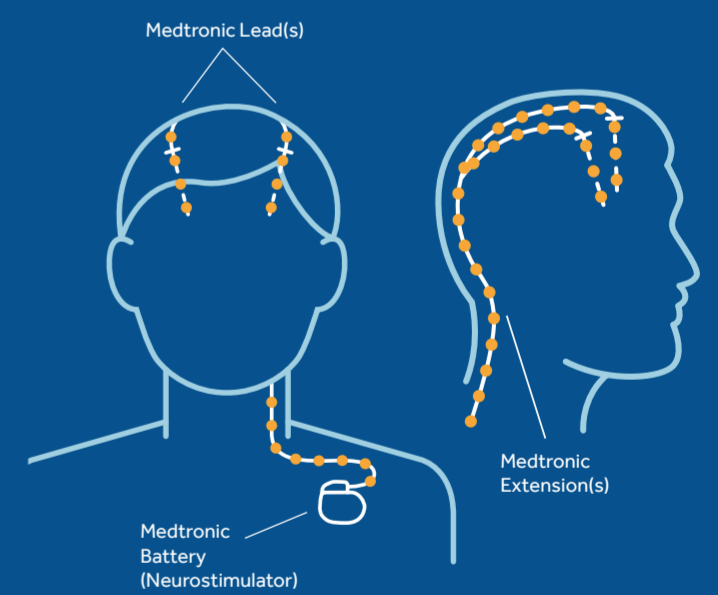
DBS is highly effective in properly selected patients. It is a surgery that provides patients with relief from many Parkinson's disease symptoms through electrical stimulation



MEDTRONIC has been the leader in DBS treatment for **30 YEARS**

WHAT IS DBS

Just like a pacemaker for the heart, a neurostimulator continuously produces electrical impulses that are sent to the brain to block or regulate abnormal brain messages that cause some of the movement symptoms of Parkinson's



150,000³ **MEDTRONIC DEVICES** implanted worldwide

HOW MEDTRONIC DBS MAY HELP



Additional hours of good movement



Reduces dyskinesia and fluctuations



Improves quality of life



Works day and night



Treats tremors and rigidity



Improves activities of daily living

1. www.epda.eu.com

2. www.parkinson.org

3. Number of unique patients implanted (i.e. "new patients")

* See the device manual for detailed information regarding the instructions for use, the implant procedure, indications, contraindications, warnings, precautions, and potential adverse events. If using an MRI SureScan® device, see the MRI SureScan® technical manual before performing an MRI. For further information, contact your local Medtronic representative and/or consult the Medtronic website at www.medtronic.com.