

WORLD PARKINSON'S DAY APRIL 11TH



PARKINSON'S DISEASE FACTS AND FIGURES¹



A chronic and progressive movement disorder, in which symptoms worsen over time.



As the disease progresses, the amount of dopamine produced in the brain decreases, leaving a person unable to control movement normally.

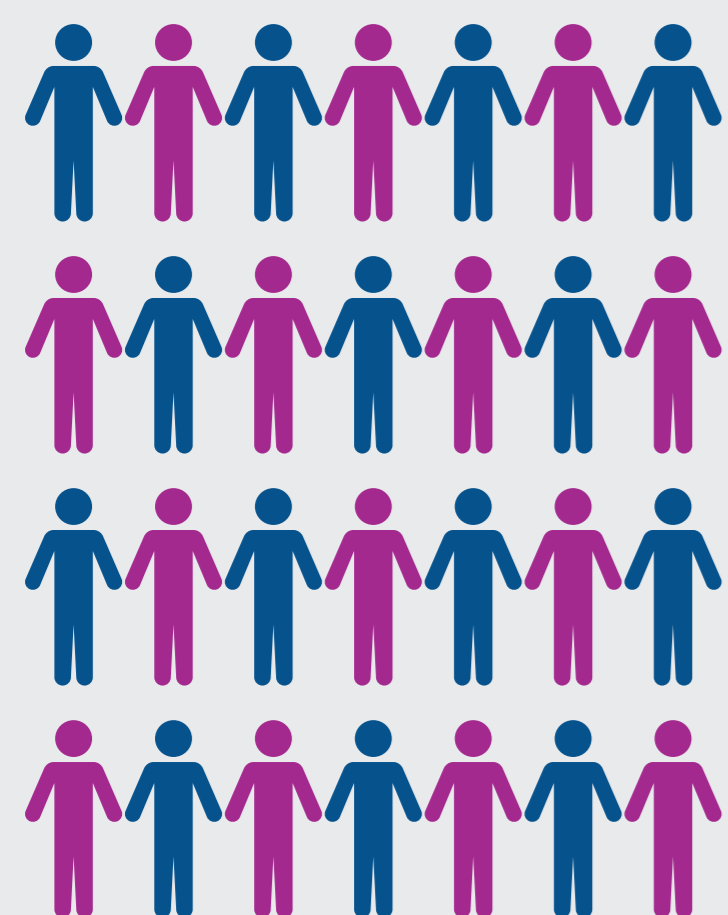


Men are 1.5 times more likely to have Parkinson's than women².



Exact cause of Parkinson's remains unknown.

PREVALENCE OF PARKINSON'S DISEASE¹



OVER 6.3M
PEOPLE

affected worldwide in 2015

This number will
DOUBLE
by 2040

1/10
people with Parkinson's are
under 50 years old

PARKINSON'S DISEASE SYMPTOMS AND PROGRESSION^{1,3}

Primary symptoms of Parkinson's



Tremor of the hands, arms, legs, jaw and face



Bradykinesia or **slowness** of movement



Rigidity or stiffness of the limbs and trunk



Postural instability or impaired balance and coordination

Disease progression



1. One side of the body affected



2. Both sides affected, but balance intact



3. Walking or standing difficult without assistance



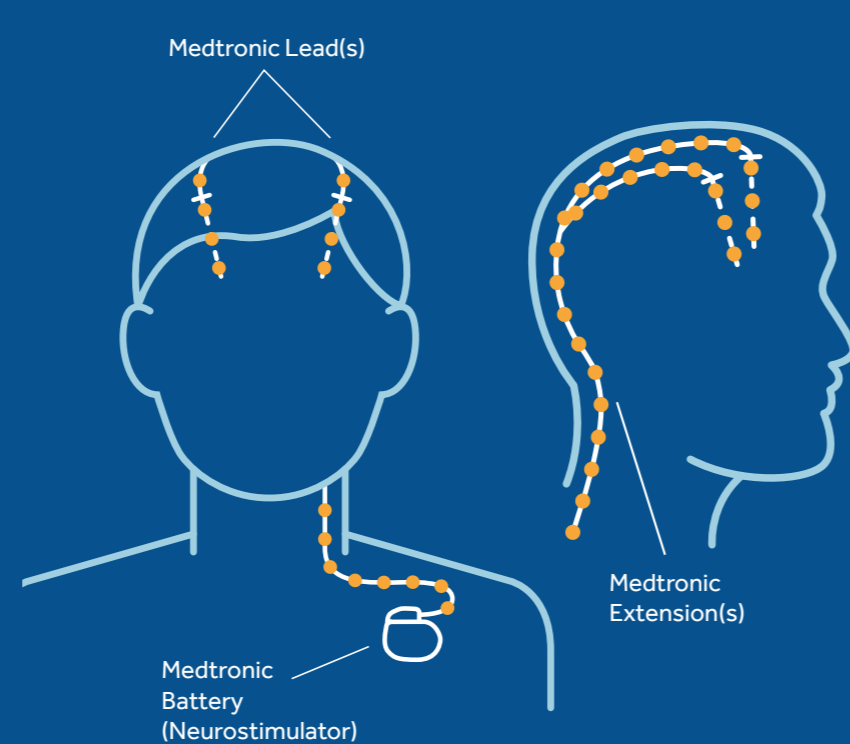
4. Balance impaired. Not functioning independently



5. Bedridden or wheelchair bound without assistance

WHAT IS DBS

Like a pacemaker for the heart, a neurostimulator continuously produces electrical impulses that are sent to the brain to block or regulate abnormal brain messages that cause some of the movement symptoms of Parkinson's

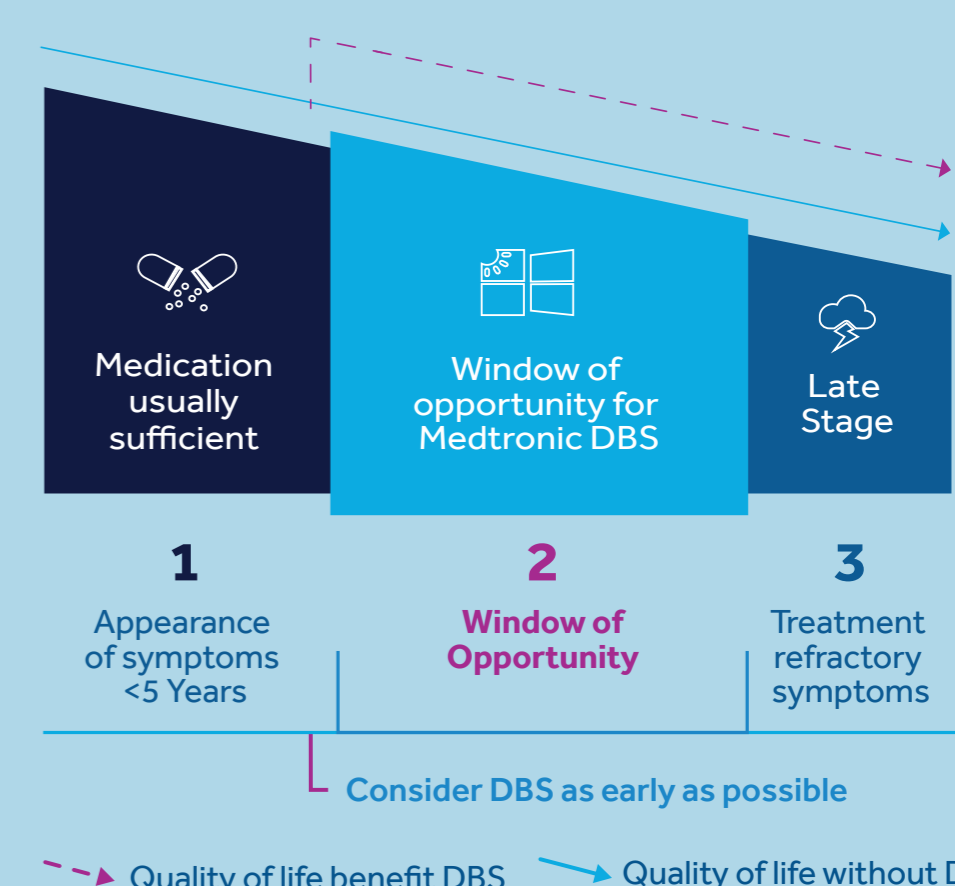


150,000⁴
MEDTRONIC DEVICES
implanted worldwide

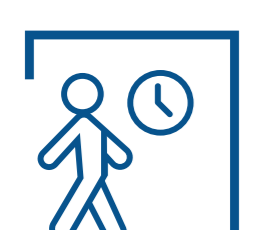
WHEN TO CONSIDER DBS THERAPY^{5*}

DBS is highly effective in properly selected patients. It is a surgery that provides patients with relief from many Parkinson's disease symptoms through electrical stimulation

MEDTRONIC has been the leader in DBS treatment for
30 YEARS



HOW MEDTRONIC DBS MAY HELP



Additional hours of good movement



Reduces dyskinesia and fluctuations



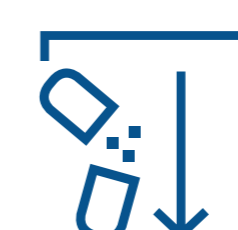
Improves quality of life



Works day and night



Treats tremors and rigidity



May help reduce medication intake



FOR MORE INFORMATION, VISIT OUR WEBSITE

1. www.epda.eu.com
2. Are men at greater risk for Parkinson's disease than women?; Wooten G., J Neurol Neurosurg Psychiatry 2004;75:637-639
3. www.parkinson.org
4. Number of unique patients implanted (i.e "new patients")
5. Okun MS, Foote KD. Parkinson's disease DBS: what, when, who and why? The time has come to tailor DBS targets. Expert Rev Neurother. 2010 December; 10(12): 1847-1857".
* See the device manual for detailed information regarding the instructions for use, the implant procedure, indications, contraindications, warnings, precautions, and potential adverse events. If using an MRI SureScan® device, see the MRI SureScan® technical manual before performing an MRI.
For further information, contact your local Medtronic representative and/or consult the Medtronic website at www.medtronic.com.