

Medtronic

Engineering the extraordinary

Quick reference guide

Medtronic Extended Infusion Set

As a Medtronic insulin pump user with the Medtronic Extended infusion set, this manual will walk you through the insertion steps.





Medtronic Extended infusion set and reservoir

Extended wear
up to 7 days

Depending on your insulin needs, your reservoir may last less than 7 days. In this case, change only the reservoir without inserting a new infusion set by filling the reservoir with enough insulin to last until you replace the infusion set.

When you change the infusion set, change the reservoir.



This document provides instructions for insertion of the Medtronic Extended Infusion Set with MiniMed™ 600 and 700 series insulin pumps.

Changing the Medtronic Extended infusion set and reservoir

With MiniMed™ systems 600 and 700 series

Start here

1



Wash your hands.

2



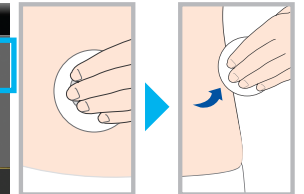
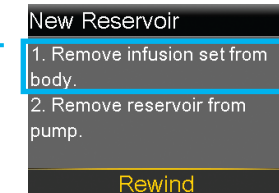
Go to your Reservoir & Tubing menu

3



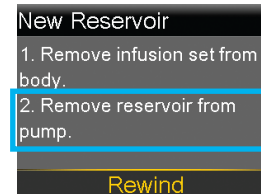
Select **New Reservoir**.

4



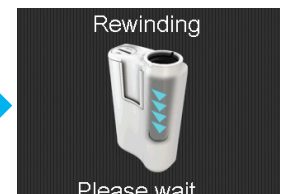
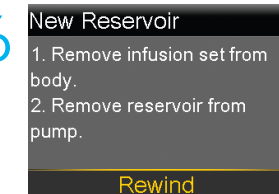
Reservoir & Infusion Set (site): Remove the infusion set you have been using by loosening the adhesive and pulling away from body.

5



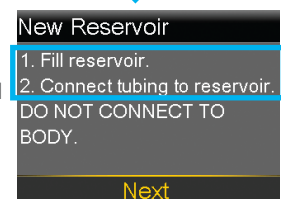
Remove the used reservoir from the pump.

6



With the infusion set removed from your body and the reservoir removed from the pump, select **Rewind**.

Continue with "Fill the Reservoir" on the next page.



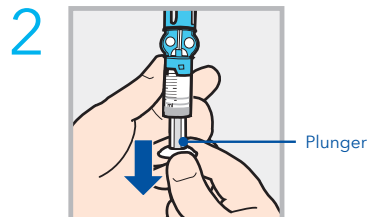
Changing the Medtronic Extended infusion set and reservoir

With MiniMed™ systems 600 and 700 series

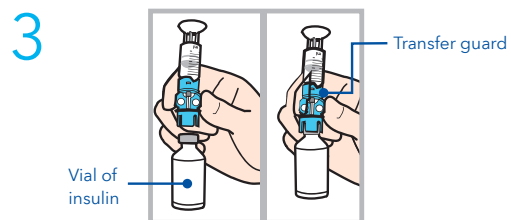
Filling the reservoir



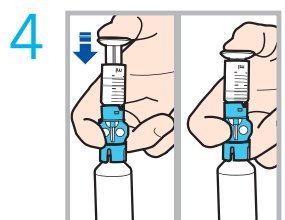
Remove from package. Make sure insulin vial is at room temperature to reduce the risk of air bubbles.



Pull plunger down to the amount that you plan to fill with insulin.



Wipe vial with alcohol. Place vial on table. Firmly press the **blue** transfer guard onto vial.

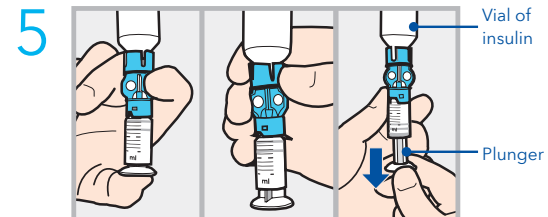


Push and hold plunger down.

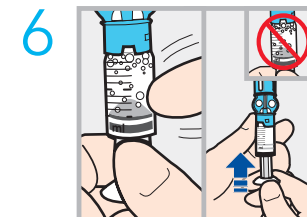
Warning:

Do not use the reservoir or infusion set if any liquid gets on the top of the reservoir or inside the tubing connector. Liquid can temporarily block the vents. This may result in the delivery of too little or too much insulin, which can cause hyperglycemia or hypoglycemia. If any liquid gets on the top of the reservoir or inside the tubing connector, start over with a new reservoir and infusion set.

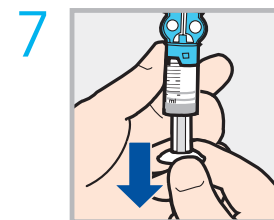
Filling the reservoir (cont'd)



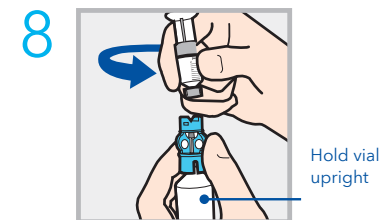
With your thumb still on the plunger, flip over so vial is on top. Release thumb and pull plunger down to fill with insulin.



Tap the reservoir to move air bubbles to top of reservoir. Push plunger up to move air into vial.



Pull plunger back down to amount of insulin needed.



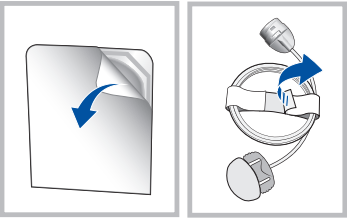
To avoid getting insulin on the top of the reservoir, turn vial over so it is upright. Hold transfer guard and turn reservoir counter-clockwise and remove from transfer guard.

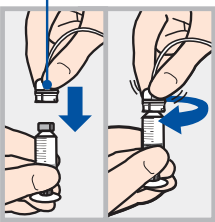
Speak to your healthcare professional for guidance to treat low blood glucose as part of your insulin therapy.

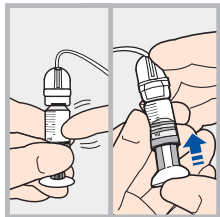
Changing the Medtronic Extended infusion set and reservoir

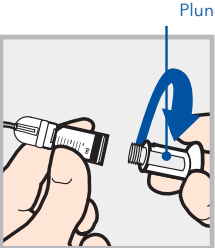
With MiniMed™ systems 600 and 700 series

Connecting the reservoir and tubing

- 

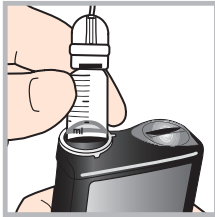
Remove the infusion set from the packaging. Remove the paper holding the tubing together and unroll the tubing.
- 

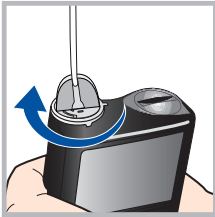
Gently push the tubing connector onto reservoir. Turn clockwise until locked. You will hear a click.
- 

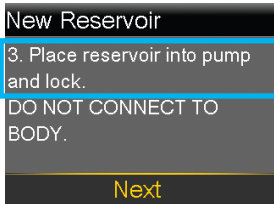
If you see air bubbles, tap reservoir to move them to top. Push plunger just a bit to move them into tubing.
- 


Twist plunger counter-clockwise to loosen and remove.

Placing the reservoir into pump

- 

Place the reservoir into the pump.
- 

Turn the reservoir clockwise until it locks into place.
- 

Select **Next**.
- 

Select **Next**.

Note:
Never fill the tubing when connected to body.

The backlight may have turned off.

Press any button to turn the screen back on.

Press **O** to open the menu. If the pump is locked, you will need to unlock the pump after pressing **O**.

Select **Load Reservoir**.



Select **Next**.

Changing the Medtronic Extended infusion set and reservoir

With MiniMed™ systems 600 and 700 series

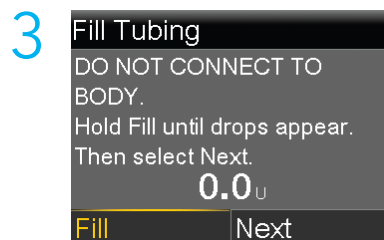
Loading the reservoir and filling the cannula



Select **Load** and keep holding **O**.

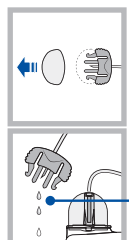


When you see this screen, select **Next**.

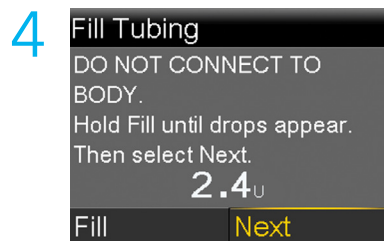


New tubing: Remove the white cap from the site connector by squeezing the sides of the site connector then pulling the white cap off.

Select **Fill** and keep holding or until you see drops at the end of tubing, then let go.



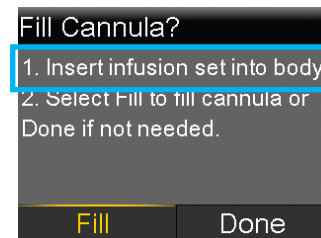
Drops at end of tubing



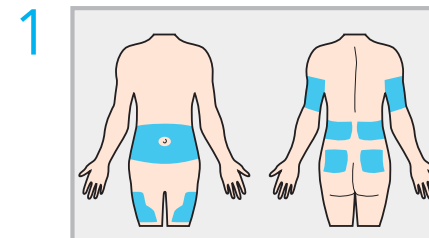
Note: If filling a new reservoir only mid-wear: After reconnecting the tubing to the new reservoir press and hold select until all bubbles have cleared the tubing.

After you see drops, press **>** and select **Next**.

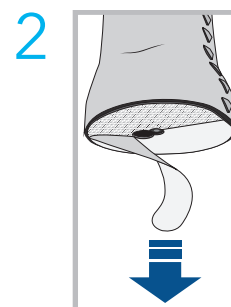
Inserting the infusion set



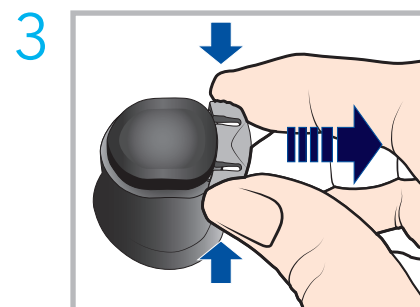
Set the pump aside.



Choose an insertion site from the shaded areas shown here. Wipe with alcohol or other antiseptic.



Remove the paper backing from the adhesive. Be careful not to touch the adhesive.



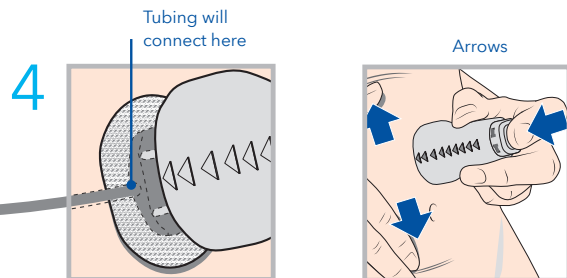
Remove the disconnect cover (the small plug below the button) by gently squeezing the sides of the disconnect cover then pulling it away from the insertion device.

Keep the disconnect cover to plug into the cannula housing whenever you disconnect the tubing.

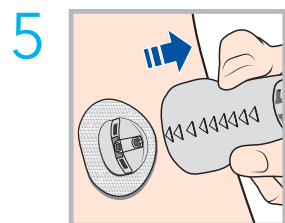
Changing the Medtronic Extended infusion set and reservoir

With MiniMed™ systems 600 and 700 series

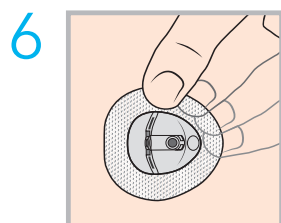
Inserting the infusion set (cont'd)



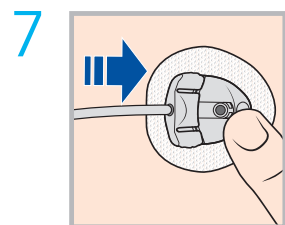
The raised arrows on the insertion device indicate the direction the tubing will run when it is connected. Stretch the skin until smooth. Place the insertion device in the desired location on your skin. Then press the top button completely down to insert the infusion set.



Gently and carefully remove the insertion device by pulling straight away from your body.



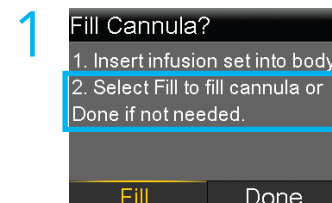
Press the adhesive onto the skin with your finger. Replace the infusion set if the adhesive does not stick to the skin.



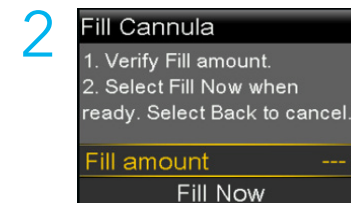
Gently hold the cannula housing steady with your finger. Then push the site connector straight into the cannula housing until you hear a click.

Note: Dispose of the insertion device in an appropriate sharps container and in accordance with your local laws.

Filling the cannula



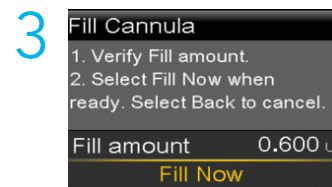
Select **Fill**.



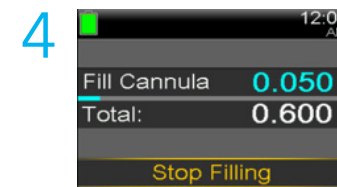
Select **Fill amount** and enter **0.600u** of insulin. Then press **○**.

Note: Your pump will remember the **Fill amount** that you used last. Always verify that the Fill amount is correct.

- If it is correct, press **✓** to **Fill Now** and press **○**.
- If it is incorrect, press **○**. Change to correct amount and press **○**. Select **Fill Now**.



Select **Fill Now**.



The Home screen displays insulin during filling.

Note: Only select **Stop Filling** if you need to stop, for example, if you notice the **Total** amount is incorrect. This should rarely happen if you have verified the **Fill amount** on the previous screen.

Your infusion set change is now complete.

Remember to check blood glucose 1-3 hours after changing your infusion set.

Changing the Medtronic Extended reservoir* only

With MiniMed™ systems 600 and 700 series

Start here



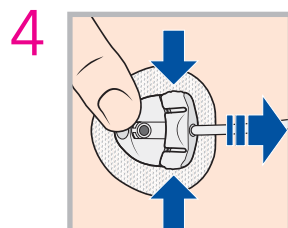
Wash your hands.



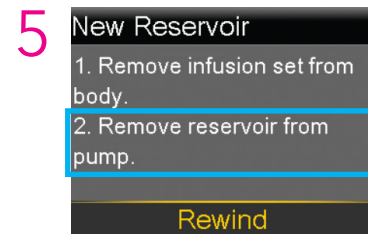
Go to your Reservoir & Tubing menu.



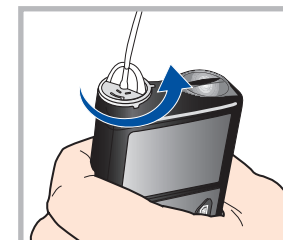
Select **New Reservoir**.



When changing the reservoir only: Disconnect the tubing from the cannula housing. **Do not remove the cannula housing from your body.**

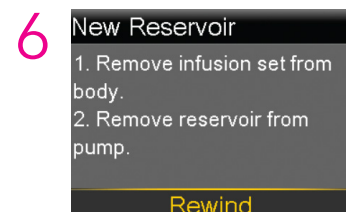


Remove the used reservoir from the pump.

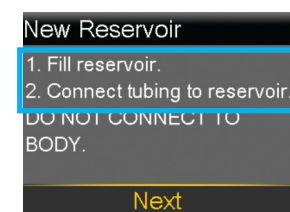


Note: Dispose of the used reservoir in an appropriate sharps container and in accordance with your local laws.

Disconnect the tubing connector from the used reservoir. Place the tubing on a clean surface. Do not throw out.



With the reservoir removed from the pump, select **Rewind**.



For the next steps **Filling the reservoir**, **Connecting the reservoir and tubing**, **Placing the reservoir into the pump** and **Loading the reservoir**, follow the instructions on pages 4 to 8, then go to the next page.

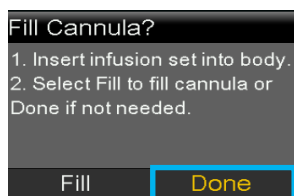
Changing the Medtronic Extended reservoir* only

With MiniMed™ systems 600 and 700 series

⚠ WARNING:

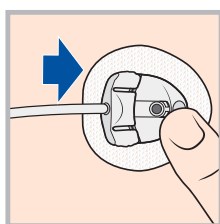
DO NOT fill the cannula. Select Done. When reconnecting the infusion set following a reservoir-only change, filling the cannula may result in the delivery of too much insulin, which could cause hypoglycemia.

1



It is not necessary to fill the cannula because you did not change your infusion set. Press ➤ and select Done.

2



Gently hold the cannula housing steady with your finger. Then push the site connector straight into the cannula housing until you hear a click.

Speak to your healthcare professional for guidance to treat low blood glucose as part of your insulin therapy.

Your reservoir change is now complete.

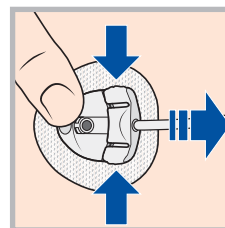
Remember to check blood glucose 1-3 hours after changing your reservoir.

Disconnecting and reconnecting the Medtronic Extended infusion set to body

With MiniMed™ systems 600 and 700 series

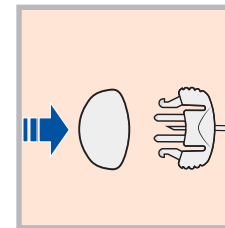
Disconnecting the infusion set from your body

1



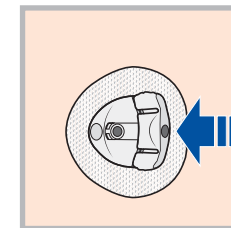
To disconnect, gently hold the cannula housing steady with your finger. Then squeeze the sides of the site connector and pull it out from the cannula housing.

2



Put the white cap on the site connector.

3



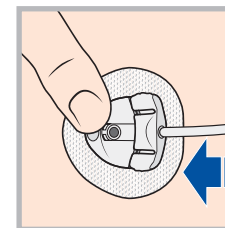
Put the disconnect cover on the cannula housing. Then push the cover into the cannula housing until you hear a click.

Reconnecting the infusion set to your body

1

Check to make sure there is no air in the tubing. If there is air in the tubing, fill the tubing with insulin as instructed earlier in this document.

2



Use your finger to gently hold the cannula housing steady. Push the site connector into the cannula housing until you hear a click.

Medtronic Extended Infusion Set & Reservoir*

Extended wear up to 7 days



IMPORTANT SAFETY INFORMATION

For a listing of indications, contraindications, precautions, warnings, and potential adverse events, please refer to the Medtronic Extended infusion set and Extended reservoir Instructions for Use. Refer to your Medtronic insulin pump user guide for a list of compatible insulins and infusion sets.

*Compatible only with MiniMed™ insulin pumps 600 and 700 series

Medtronic

99 Hereford Street
Brampton, Ontario, L6Y 0R3
Toll-free: 800.268.5346
Tel: 905.460.3800

www.medtronicdiabetes.ca

For more information

Call 1-800-284-4416
or visit www.medtronicdiabetes.ca

©2023 Medtronic. All rights reserved. Medtronic, Medtronic logo and Engineering the extraordinary are trademarks of Medtronic.™*Third party brands are trademarks of their respective owners. All other brands are trademarks of a Medtronic company.
CA-DIB-0143-E Rev. 03/2023