



Delivering a new standard

Artisse™

Intrasaccular Device

Advancing innovation with a single, atraumatic, highly conformable device that provides confidence, control, predictability and safety.^{14,15}



The Artisse™ Intrasaccular Device provides you with confidence, control, predictability and safety for efficacious outcomes.¹⁶

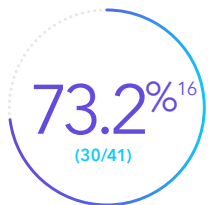
Innovation

Advancing our legacy of haemorrhagic innovation: With advanced atraumatic open tip design, conformability, flared shape and proximal flow divider profile to remodel flow.^{1, 3, 4, 5, 10, 11, 13, 14, 15}

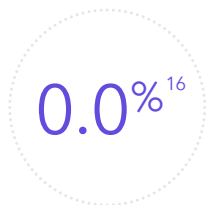
- **Conformability:** Unique construction and low stiffness modulus conforms to the aneurysm and neck, to divert flow.^{14, 15}
- **Control:** All sizes through an 021 microcatheter with low handling forces and highly rated control.^{13, 14, 15}
- **Ease of use:** Leverage conformability and multiple modalities of sizing* working together for a personalised fit for patients.^{4, 5, 14, 15, 17} INSPIRE-A demonstrated a 96.9% patient-level implant success rate with a mean cumulative fluoro time of 24.7 mins.¹⁶

Efficacy and Safety

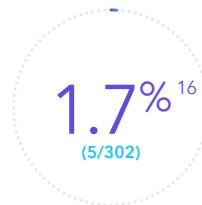
Raising the bar with meaningful Raymond Roy class 1 outcomes. Achieving high complete occlusion rates and low adverse events, demonstrated by the INSPIRE-A real world multi-center registry.¹⁶



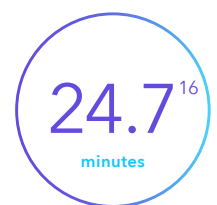
Complete occlusion in INSPIRE-A (30/41, excluding cannot determines. 60% (30/50, including cannot determines)



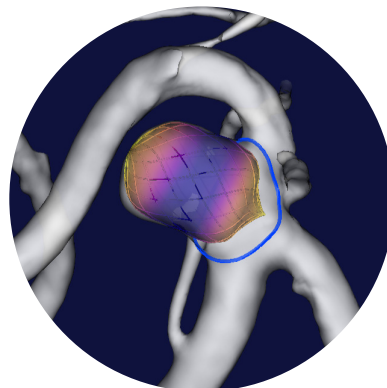
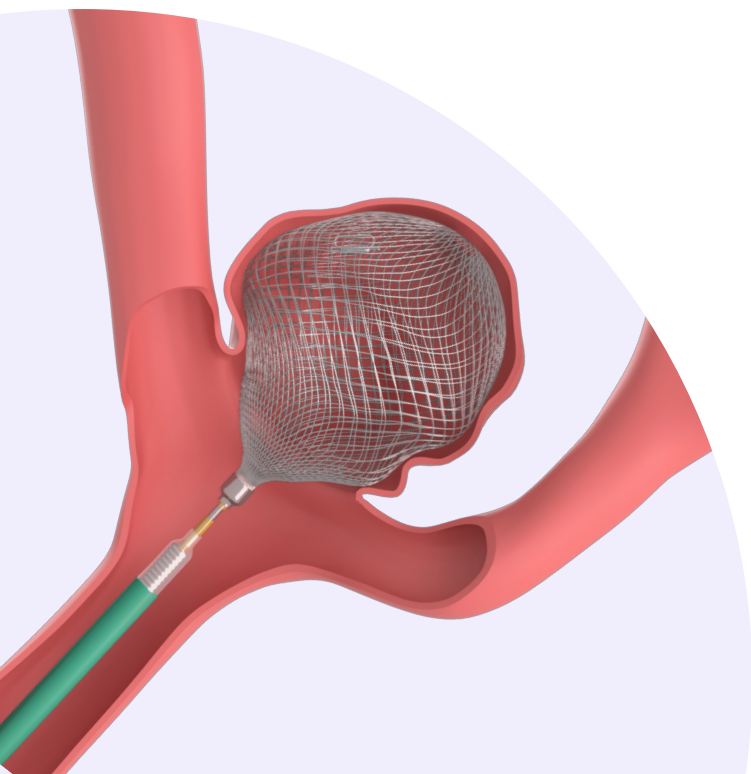
Recurrence rate¹⁸



Major stroke in treated vascular territory



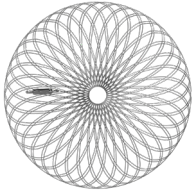
Mean cumulative fluoro time



As unique as each patient:

3D simulation (where available) to assess apposition, compression, device deformation and orientation.¹⁷

*2-D sizing chart and 3D-Simulation



Atraumatic open distal tip

Helps protect the dome during deployment.^{4, 5, 10}

Dual-layer mesh basket

Double layer of 144 drawn filled tube (DFT) wires form a basket that provides a balance of radial force and conformability. Platinum core nitinol wires provide complete implant visibility.^{1, 10, 13}

Flared shape

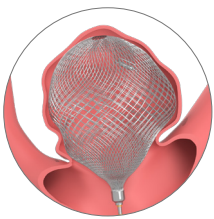
Provides a balance of radial force and stability for optimal implant fit in wide-necked aneurysms.^{1, 3, 10, 11}

Proximal marker

Platinum-iridium alloy marker for added visibility.^{5, 10}

Distal marker

Platinum-iridium alloy marker for visibility.^{6, 13}



Proximal flow divider

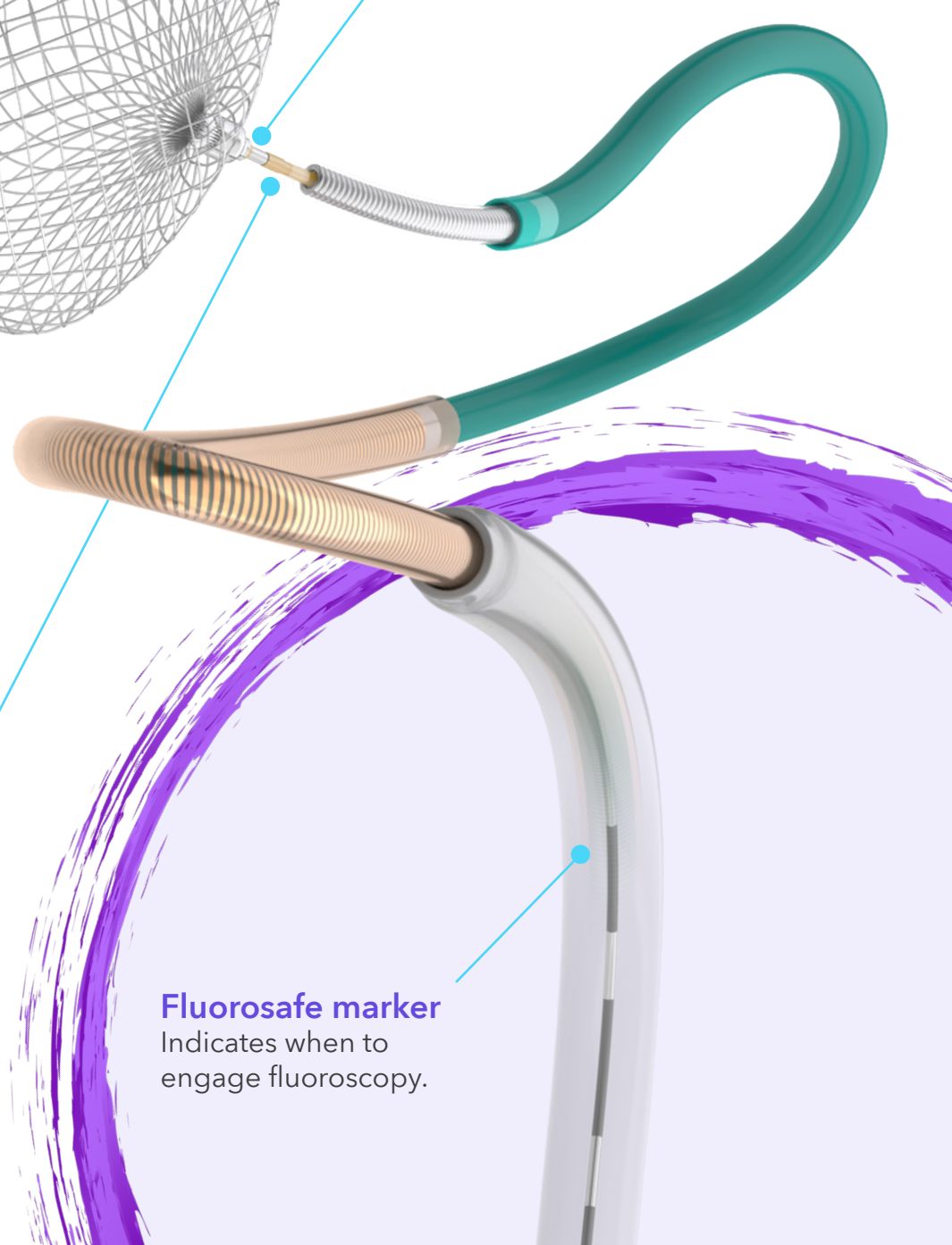
Convex flow divider profile to help remodel flow in bifurcating vessels.^{3, 5}

Detachment zone

Erodes during detachment, separating the implant from the pusher.^{2, 3, 5, 10}

Fluorosafe marker

Indicates when to engage fluoroscopy.



Artisse™ Intracapsular Device

CFN	(W x H) mm	CFN	(W x H) mm	CFN	(W x H) mm
ISF-045-030	4.5 x 3.0	ISF-060-040	6.0 x 4.0	ISF-075-040	7.5 x 4.0
ISF-045-040	4.5 x 4.0	ISF-060-050	6.0 x 5.0	ISF-075-050	7.5 x 5.0
ISF-050-030	5.0 x 3.0	ISF-065-030	6.5 x 3.0	ISF-080-040	8.0 x 4.0
ISF-050-040	5.0 x 4.0	ISF-065-040	6.5 x 4.0	ISF-080-050	8.0 x 5.0
ISF-055-030	5.5 x 3.0	ISF-065-050	6.5 x 5.0	Artisse™ Detachment Device	
ISF-055-040	5.5 x 4.0	ISF-070-030	7.0 x 3.0	ISD-5-PK (Pack of 5)	
ISF-055-050	5.5 x 5.0	ISF-070-040	7.0 x 4.0	Rebar™ 18 Micro Catheter	
ISF-060-030	6.0 x 3.0	ISF-070-050	7.0 x 5.0	105-5081-153	

References

1. Data on file D00360690 Artisse 2 Design Verification Implant Shape and Chronic Outward Force Report. 23-Nov-2020
2. Data on file TR-NV12721. Artisse™ 021 Detachment and Kink Resistance Study. 27- May-2016
3. Data on file D00662662 Artisse 2 Rabbit Vessel Pouch Aneurysm GLP Animal Study Design Validation Report. Testing performed with 14 rabbits with a preexisting surgically created elastase induced aneurysm. 06-Nov-2023
4. Data on file D00357033 Artisse 2 Intracapsular Device Design Validation Report. 17-Nov-2020
5. Data on File TR-NV12962 Artisse-021 System Design Validation Report. 19-Jul-2016
6. Data on File DWGS31529 Distal Marker Band. 23-Apr-2019
7. Data on file DWGS31527 Inner Marker Band. 23-Apr-2019. DWGS31528 Outer Marker Band. 23-Apr-2019
8. Data on file DWGS31528 Outer Marker Band. 23-Apr-2019
9. Data on File DWGS31525 Wire for Implant, Artisse. 23-Apr-2019
10. Data on File M810805ADOC1 Artisse Implant Subassembly. 18-Sep-2023
11. Data on File D00789514 Artisse 2 25% Compression Radial Force Design Verification Testing Report. 02-Sep-2022
12. Artisse Instructions For Use M012064CDOC2_C
13. Competitive testing report, intracapsular device competitive evaluation. Data on file D01177929 Rev A
14. Data on File Artisse Intracapsular Device Conformability and Control Physician Survey
15. NeuroNews Physician Interview on Clinical Perspectives on Artisse. Advertorial May 2024, Issue 54
16. Artisse INSPIRE-A, 12M Safety and Efficacy Data as presented by Prof Killer at LINNC Paris 2025. (Interim data. Enrollment and follow-up ongoing. This is not the final data set.)
17. Sim&Size v1.2 User manual
18. Recurrence rate definition: Evidence of change in aneurysm occlusion status from complete occlusion to residual aneurysm/neck on DSA imaging compared to previous DSA imaging. The assessment is based on medical judgement and should only be done if there are 2 DSA imaging to compare against.

Medtronic

99 Hereford Street
Brampton, Ontario, L6Y 0R3
Toll-free: 800.268.5346
Tel: 905.460.3800

medtronic.ca

For a listing of indications, contraindications, precautions, warnings, and potential adverse events, please refer to the Instructions for Use.

©2026 Medtronic. All rights reserved. Medtronic, Medtronic logo and Engineering the extraordinary are trademarks of Medtronic.™*Third party brands are trademarks of their respective owners. All other brands are trademarks of a Medtronic company.
CA-CTL-0560-E Rev. 03/2026