

# Galaxy

## A new world of real evidence insights



**Medtronic**

Engineering the extraordinary

# Reshaping the way clinical knowledge is generated from your patient's clinical data



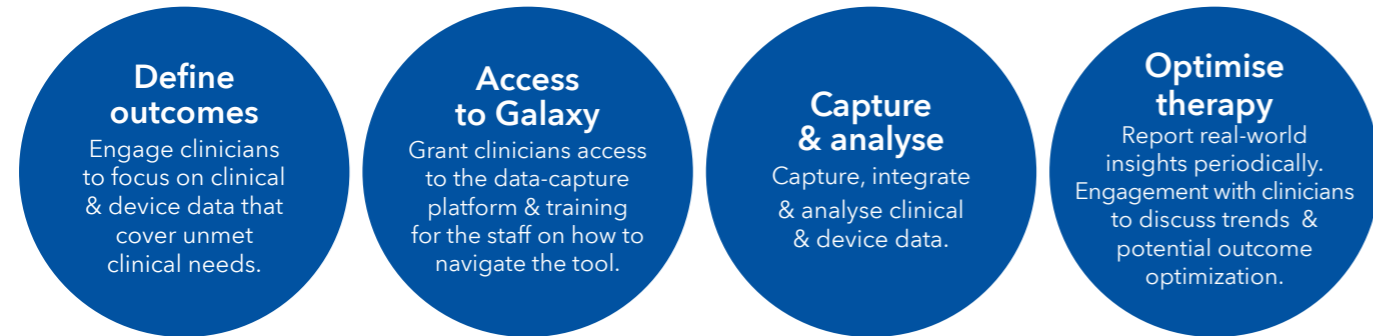
Medtronic Galaxy, a service for healthcare providers, empowers you to analyse your own data to identify trends and insights for clinical benchmarking while aggregating data from different sources to foster research and collaboration.

By networking medical centres to collect and process clinical data, Galaxy provides you with the statistical power to draw timely and valuable scientific insights which convert data into real-world evidence.

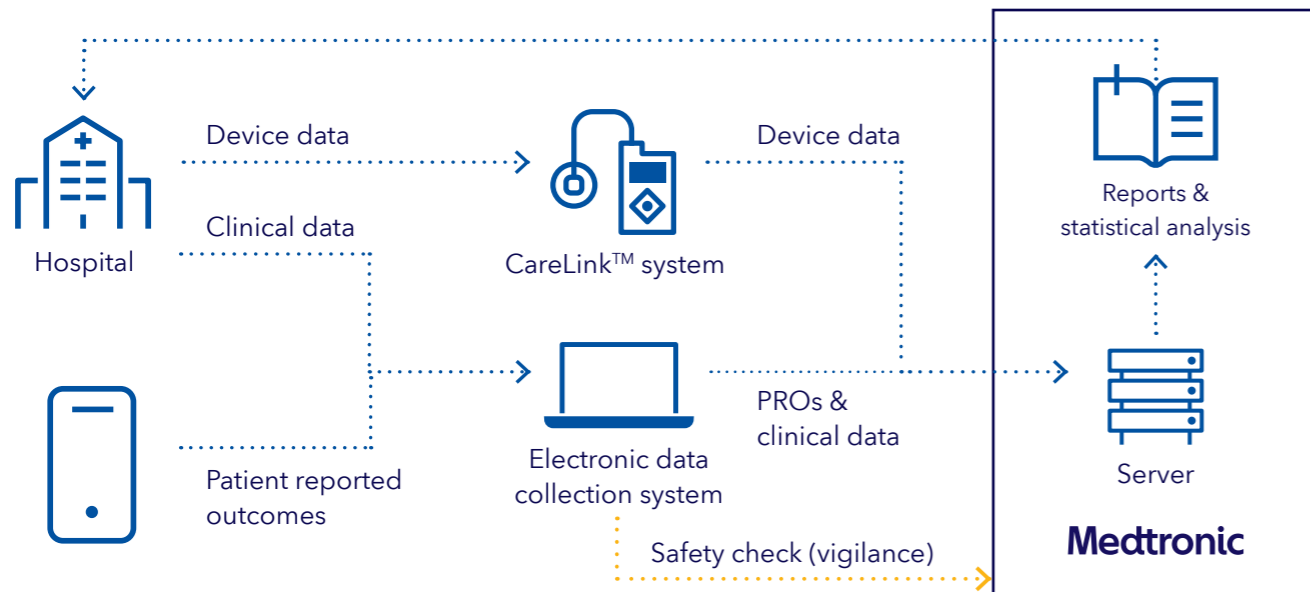
The Galaxy platform collects and processes data from three different sources:

1. Clinical data
2. Carelink™ data
3. Patient app data

## Galaxy key advantages:



## How it works?



# Empower your analysing capabilities with Galaxy reporting functionality

Ad hoc reports can be designed upon your clinical needs

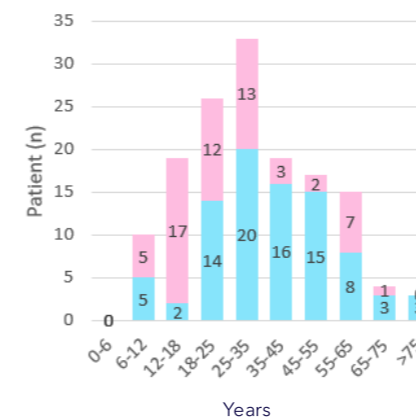
OneHospital ClinicalService Galaxy

## GALAXY REPORT - device: MiniMed™ 780G system (Example Report)

### GENERAL INFORMATION

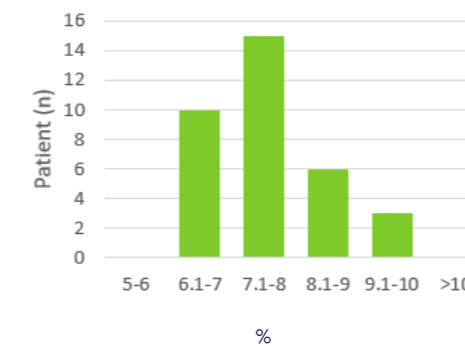
N pts

#### Gender and current Age



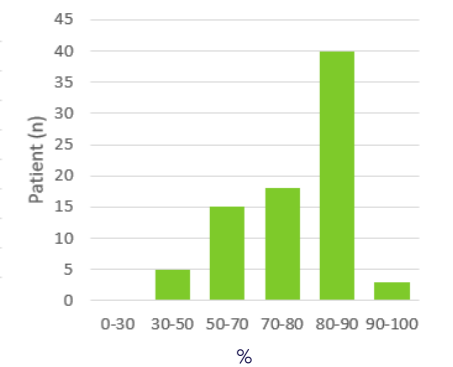
#### GMI

Latest GMI in the last 3 months



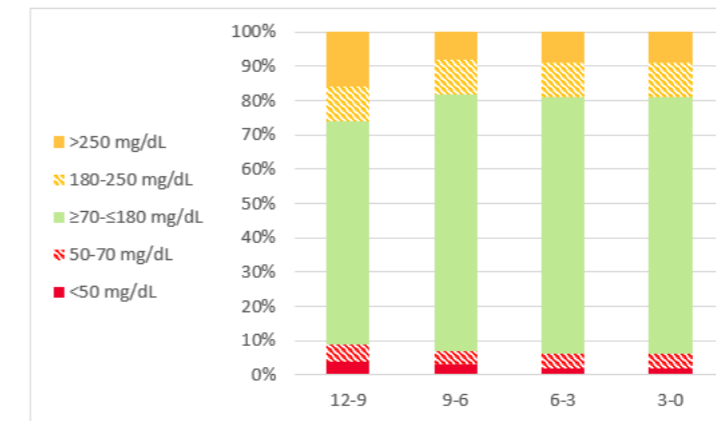
#### Time in range

Time % in 70-180 in the last 3 months



### DEVICE DATA

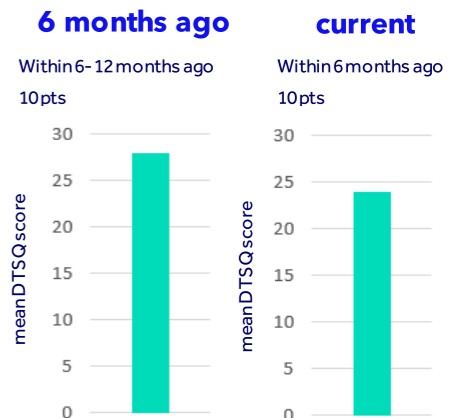
	Months ago			
	12-9	9-6	6-3	3-0
Mean GMI %	7.0	6.9	7.2	7.1
Mean SG (mg / dL)	123	132	116	128
Pts number	50	55	55	55



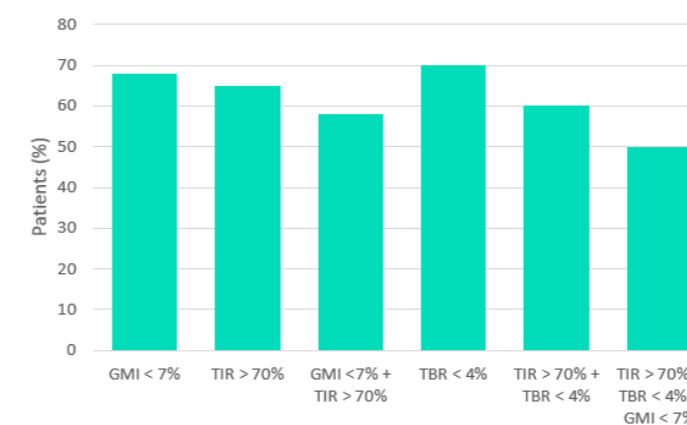
### APP DATA

N pts	N diaries
50	100

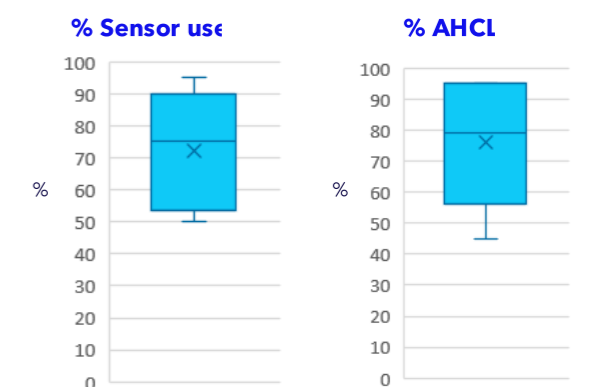
### DTSQ



### ACHIEVEMENTS IN THE LAST 3 MONTHS



### SYSTEM USABILITY



# How to Activate Galaxy

1

## Physician request

### Solicitation Letter

This should be provided by physicians that are interested on in the OHCS Galaxy\* Solicitation could be provided via email and should include the following information:

- Name of physician
- Name of hospital and department
- Brief description of needed support

2

## Contract negotiation with hospital

### Agreement

Between the hospital and Medtronic

3

## Responsible physician engagement

### Responsibility Letter

Signed by a physician who will be appointed by the hospital as being responsible for the service and being the main point of contact for Medtronic.

4

## Training and account creation

### Training Evidence documentation on how to use the EDC.

Training will be performed by Medtronic personnel.

### Grant Access

To the EDC for the hospital Staff as denoted by Responsible Physician

5

## Service active in the hospital



Scan now and discover how Galaxy is disrupting the way you manage your patients' clinical information.

If you want a Galaxy live demo please contact to your local Medtronic Diabetes Clinical Specialist.