

2025 Peripheral Vascular Diagnostic & Intervention Coding Sheet

Medtronic

**Reimbursement
Information Line**
Tel: 877.347.9662

| | | |
|-----------|----------------|--------------------|
| Patient: | Date of Birth: | Date of Procedure: |
| Refer.MD: | DX: | |

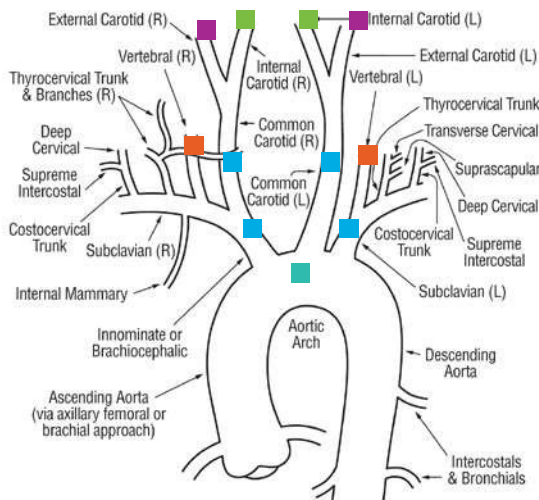
CPT® codes, descriptions and other data only are copyright 2023 American Medical Association. All Rights Reserved. Applicable FARS/HHSARS apply. Fee schedules, relative value units, conversion factors and/or related components aren't assigned by the AMA, aren't part of CPT®, and the AMA isn't recommending their use. The AMA doesn't directly or indirectly practice medicine or dispense medical services. The AMA assumes no liability for data contained or not contained herein. Code descriptions have been abbreviated in this document. For specific AMA descriptions of current CPT® coding, please refer to the most recent version of the CPT® Coding Book

| NON-SELECTIVE CATHETERIZATION | |
|--|-----------|
| Carotid or vertebral, by direct puncture of either vessel | 36100 |
| Extremity artery, upper or lower, by direct puncture | 36140 |
| Aorta, translumbar, by direct puncture | 36160 |
| Aorta, catheter (by peripheral puncture, eg, femoral) | 36200 |
| SELECTIVE CATHETERIZATION | |
| 1st order selective, thoracic or brachiocephalic | 36215 |
| 2nd order selective thoracic or brachiocephalic | 36216 |
| 3rd order selective thoracic or brachiocephalic | 36217 |
| Addl 2nd or 3rd order thoracic or brachiocephalic | +36218 |
| 1st order selective abdominal, pelvic, lower extremity | 36245 |
| 2nd order selective abdominal, pelvic, lower extremity | 36246 |
| 3rd order selective abdominal, pelvic, lower extremity | 36247 |
| Addl 2nd or 3rd order abdominal, pelvic, lower extremity | +36248 |
| DIAGNOSTIC ANGIOGRAMS | |
| Thoracic aortogram | 75605-26 |
| Abdominal aortogram | 75625-26 |
| Abdominal aortogram w bilateral run-off | 75630-26 |
| Extremity angiogram, unilateral | 75710-26 |
| Extremity angiogram, bilateral | 75716-26 |
| Visceral angiogram (eg, celiac, SMA, IMA) | 75726-26 |
| Pelvic angiogram (eg, internal iliac) | 75736-26 |
| Internal mammary angiogram | 75756-26 |
| Selective angiogram, each addl vessel after basic | +75774-26 |
| DIAGNOSTIC BUNDLED RENAL ANGIOGRAMS (catheter placement + vessels imaged) | |
| Selective cath, 1 st order, renal aortogram, unilateral | 36251 |
| Selective cath, 1 st order, renal aortogram, bilateral | 36252 |
| Superselective cath 2nd order/up, renal aortogram, uni | 36253 |
| Superselective cath, 2nd order/up, renal aortogram, bil | 36254 |
| MISCELLANEOUS | |
| Non-selective iliac/femoral angiogram w heart cath | G0278 |
| Placement of closure device at access site | G0269 |

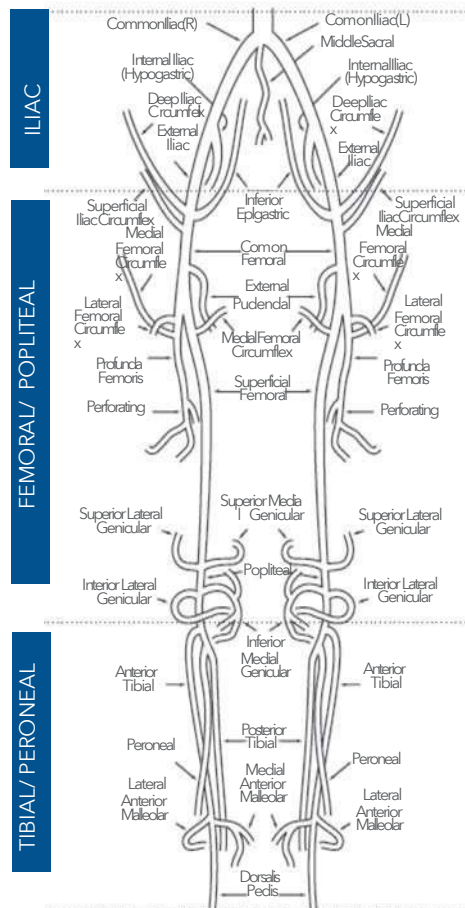
| CAROTID ARTERY STENTING, CERVICAL AND INTRATHORACIC | |
|--|--------|
| Carotid stenting, cervical carotid, w distal embolic protection | 37215 |
| Carotid stenting, cervical carotid, wo distal embolic protection | 37216 |
| Carotid stenting, intrathoracic common carotid or innominate, retrograde, w/ open cervical carotid exposure | 37217 |
| Carotid stenting, intrathoracic common carotid or innominate, antegrade approach | 37218 |
| TRANSLUMINAL ANGIOPLASTY, OTHER ARTERY OR VEIN | |
| PTA (except lower extremity, intracranial, coronary, pulmonary artery, dialysis circuit) initial artery | 37246 |
| PTA (except lower extremity, intracranial, coronary, pulmonary artery, dialysis circuit) each addl artery | +37247 |
| PTA (except dialysis circuit), initial vein | 37248 |
| PTA (except dialysis circuit), each addl vein | +37249 |
| TRANSLUMINAL ATHERECTOMY, INTRA-ABDOMINAL AND UPPER EXTREMITY | |
| Peripheral atherectomy, renal artery | 0234T |
| Peripheral atherectomy, visceral artery, each vessel | 0235T |
| Peripheral atherectomy, abdominal aorta | 0236T |
| Peripheral atherectomy, brachiocephalic trunk or branches, each vessel | 0237T |
| TRANSLUMINAL THROMBECTOMY, ARTERIAL | |
| Primary percutaneous mechanical thrombectomy, noncoronary, non-intracranial, initial vessel | 37184 |
| Primary percutaneous mechanical thrombectomy, noncoronary, non-intracranial, each addl vessel within same family | +37185 |
| Secondary percutaneous thrombectomy (eg, snare basket, suction), w primary procedure other than thrombectomy | +37186 |
| ENDOVASCULAR IVC FILTER PROCEDURES | |
| Insertion of IVC filter, includes vessel access, selection and imaging | 37191 |
| Repositioning of IVC filter, includes vessel access, selection and imaging | 37192 |
| Retrieval (removal) of IVC filter, includes vessel access, selection and imaging | 37193 |
| RETRIEVAL, INTRASVASCULAR FOREIGN BODY | |
| Transcatheter retrieval, percutaneous, of intravascular foreign body (fractured venous or arterial cath) | 37197 |
| TRANSCATHETER INFUSION FOR THROMBOLYSIS, ARTERIAL AND VENOUS | |
| Arterial infusion for thrombolysis, other than coronary or intracranial, initial treatment day | 37211 |
| Venous infusion for thrombolysis, initial treatment day | 37212 |
| Arterial or venous infusion for thrombolysis, continued on subsequent day during course of thrombolytic therapy | 37213 |
| Arterial or venous infusion for thrombolysis, cessation of thrombolysis incldg removal of catheter and vessel closure | 37214 |
| TRANSCATHETER PLACEMENT, INTRAVASCULAR STENT | |
| Stenting (except lower extremity, cervical carotid, extracranial vertebral or intrathoracic carotid, intracranial, or coronary), incldg angioplasty within same vessel, initial artery | 37236 |
| - each addl artery | +37237 |
| Stenting, incldg angioplasty within same vessel, initial vein | 37238 |
| - each addl vein | +37239 |
| OCCLUSION AND EMBOLIZATION | |
| Vascular embolization or occlusion, venous, other than hemorrhage | 37241 |
| Vascular embolization or occlusion, arterial, other than hemorrhage or tumor | 37242 |
| Vascular embolization or occlusion, for tumors, organ ischemia, or infarction | 37243 |
| Vascular embolization or occlusion, for arterial or venous hemorrhage or lymphatic extravasation | 37244 |

| ULTRASOUND GUIDANCE | |
|---|--------|
| Ultrasound guidance for vascular access | +76937 |
| INTRAVASCULAR ULTRASOUND, PERIPHERAL | |
| IVUS (noncoronary), initial vessel | +37252 |
| IVUS (noncoronary), each addl vessel | +37253 |
| MODERATE SEDATION | |
| Sedation given by physician performing procedure, initial 15 min intra-svc time; < 5 years old | 99151 |
| Sedation given by physician performing procedure, initial 15 min intra-svc time; >5 years old | 99152 |
| + each addl 15 min intra-service time | +99153 |
| Sedation given by other physician not performing procedure, initial 15 min intra-svc time;< 5 years old | 99155 |
| Sedation given by other physician not performing procedure, initial 15 min intra-svc time;> 5 years old | 99156 |
| + each addl 15 mi. intra-service time | +99157 |

NORMAL CAROTID ANATOMY WITH CATHETER POSITION FOR CODE ASSIGNMENT



LOWER EXTREMITY ANATOMY



DIAGNOSTIC BUNDLED CAROTID ANGIOGRAMS (catheter placement + vessels imaged)

| | |
|---|---|
| +36228 | Selective catheterization of each intracranial branch of internal carotid or vertebral, unilateral, with angiography of selected vessel (eg, MCA, ACA, PICA) (use with 36223, 36224, 36225, or 36226) |
| +36227 | Selective catheterization of external carotid , unilateral, with external carotid angiography (use with 36222, 36223, or 36224) |
| Note: Code +36228 can be reported no more than twice per side. | |
| 36226 | Selective catheterization of vertebral , unilateral, with vertebral/vertebrobasilar angiography |
| 36225 | Selective catheterization of subclavian or innominate , unilateral, with vertebral/vertebrobasilar angiography |
| Note: For the same side, only one code may be assigned from the range of 36225-36226. | |
| 36224 | Selective catheterization of internal carotid , unilateral, with intracranial/cerebral carotid angiography |
| 36223 | Selective catheterization of common carotid or innominate , unilateral, with intracranial/cerebral carotid angiography (including extracranial when performed) |
| 36222 | Selective catheterization of common carotid or innominate , unilateral, with extracranial/cervical carotid angiography |
| Note: For the same side, only one code may be assigned from the range 36222-36224. | |
| 36221 | Non-selective catheterization of thoracic aorta with cervicocerebral angiography of all extracranial carotid, vertebral, and/or intracranial vessels, unilateral or bilateral |
| Note: Code 36221 is included in all other angiographies and is not coded separately with 36222-36226. | |

ENDOVASCULAR LOWER EXTREMITY INTERVENTIONS

| ILIAC TERRITORY | |
|---|--|
| Primary | Add-on |
| 37220 - PTA, iliac artery, initial vessel, unilateral | +37222 - PTA, iliac artery, each addl ipsilateral iliac vessel (use with 37220, 37221) |
| 37221 - Stent, iliac artery, w/wo PTA in same vessel, unilateral | +37223 - Stent, iliac artery, each addl ipsilateral iliac vessel, w/wo PTA in same vessel (use with 37221) |
| 0238T - Atherectomy, iliac artery | |
| FEMORAL/ POPLITEAL TERRITORY | |
| 37224 - PTA, femoral/ popliteal artery, unilateral | There are no add-on codes for additional vessels treated in the femoral/popliteal territory. Because only 1 service is reported when 2 lesions are treated in this territory, report the most complex service (eg, use 37227 if a stent is placed for 1 lesion and an atherectomy is performed on a 2nd lesion). |
| 37225 - Atherectomy, femoral/ popliteal artery, w/wo PTA, in same vessel, unilateral | |
| 37226 - Stent, femoral/popliteal artery, w/wo PTA in same vessel, unilateral | |
| 37227 - Stent and atherectomy, femoral/ popliteal artery, w/wo PTA in same vessel, unilateral | |
| TIBIAL/ PERONEAL TERRITORY | |
| 37228 - PTA, tibial/ peroneal artery, initial vessel, unilateral | +37232 - PTA, tibial/ peroneal artery, each addl vessel (use with 37228-37231) |
| 37229 - Atherectomy, tibial/ peroneal artery, w/wo PTA in same vessel, unilateral | +37233 - Atherectomy, tibial/ peroneal, each addl vessel, w/wo PTA in same vessel |
| 37230 - Stent, tibial/ peroneal artery, w/wo PTA in same vessel, unilateral | +37234 - Stent, tibial/ peroneal artery, each addl vessel, w/wo PTA in same vessel |
| 37231 - Stent and atherectomy, tibial/ peroneal artery, w/wo PTA in same vessel, unilateral | +37235 - Stent and atherectomy, tibial/ peroneal artery, each addl vessel, w/wo PTA in same vessel |