

Medtronic

Detect early.
Treat early.

See how



An urgent need for bold action



1 in 4
adults

will be affected
by GI cancers and
chronic diseases
in their lifetime.¹



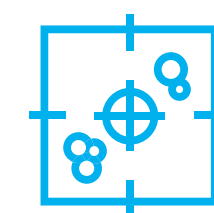
Impactful

Colorectal cancer
is the second
deadliest cancer
after lung cancer.¹



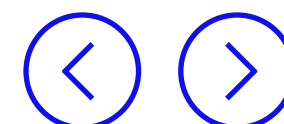
Prevalent

There are 20 million
hospitalizations for
digestive diseases
in the U.S. each year.¹



Progressive

GI cancers and chronic
diseases are difficult to
detect, but treatable if
caught early.¹

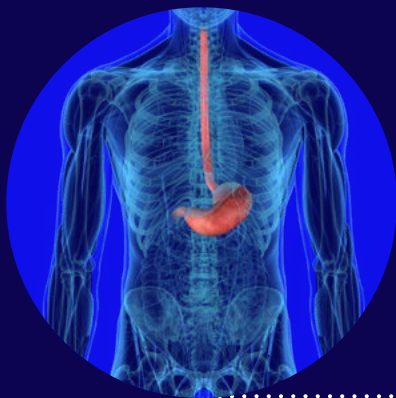


Innovative solutions in GI screening, diagnosis, and therapy

Through our disease-awareness campaigns, patients may seek screening earlier. When they do, our broad portfolio of minimally invasive GI solutions may be able to detect conditions – and treat them – early. By focusing on care across the continuum, we help improve outcomes for those with chronic GI diseases and cancers.

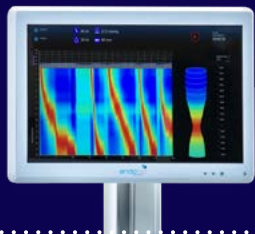


A comprehensive portfolio

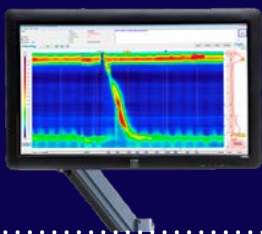


Esophageal and gastric products

Endoflip™
impedance
planimetry system



ManoScan™
ESO high resolution
manometry system



Bravo™
calibration-free
reflux testing
system



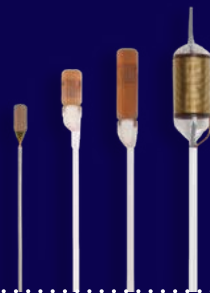
Esoflip™
dilation catheter



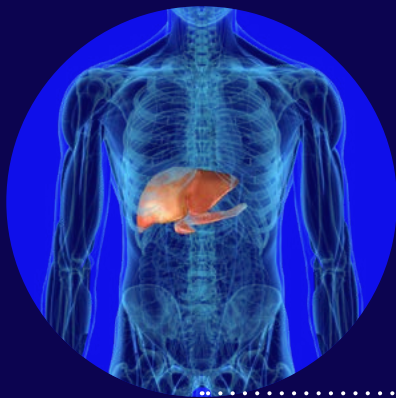
Eleview®*
submucosal
injectable
composition



Barrx™
radiofrequency
ablation system



ProdiGI™
traction wire, traction magnet, and
multi-functional electrosurgical knife



EUS and ablation products

SharkCore™
FNB needle



Beacon™
FNF pre-loaded needle



Beacon™
FNA needle



Emprint™ SX
ablation platform

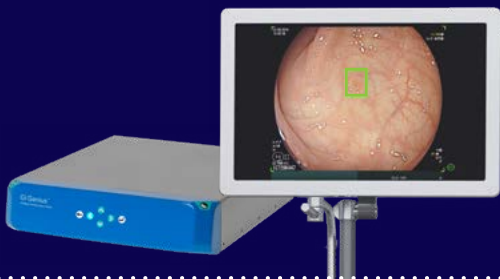


Colorectal products

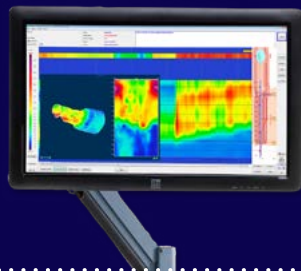
PillCam™
COLON 2 system



GI Genius™
intelligent endoscopy module



ManoScan™
AR high resolution
manometry system



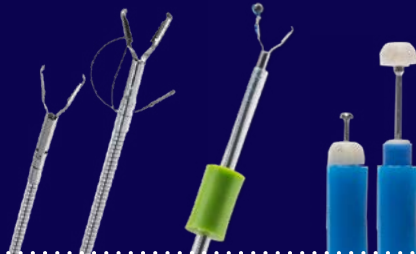
HET™
bipolar system



Eleview®*
submucosal
injectable
composition



ProdiGI™
traction wire, traction magnet, and
multi-functional electrosurgical knife



GI bleeding and chronic disease products

PillCam™
SB3 capsule



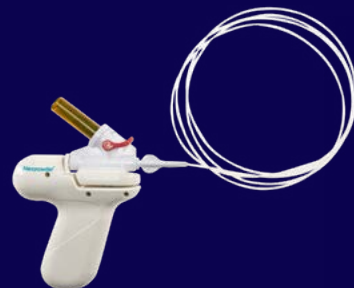
PillCam™
patency capsule



PillCam™
Crohn's capsule



Nexpowder™+
endoscopic hemostasis system



Barrx™
SB RFA endoscopic catheter



Transform esophageal care

Esophageal and gastric products

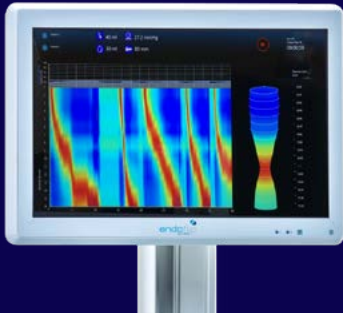
EUS and ablation products

Colorectal products

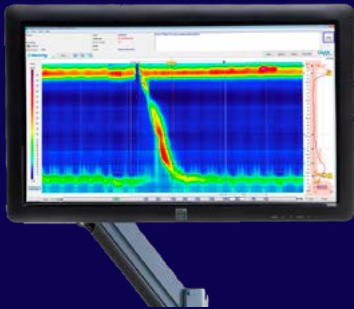
GI bleeding and chronic disease products



Endoflip™
impedance planimetry system



ManoScan™
ESO high resolution manometry system



Bravo™
calibration-free reflux testing system



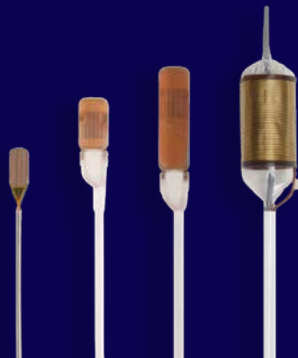
Esoflip™
dilation catheter



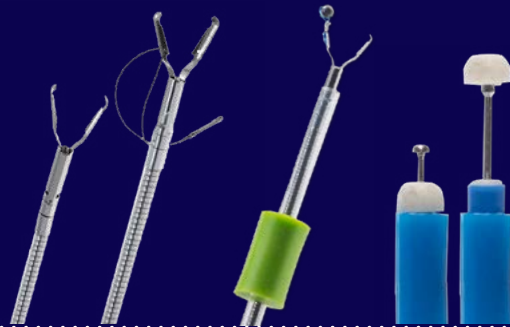
Eleview®*
submucosal injectable composition



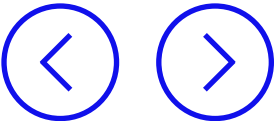
Barrx™
radiofrequency ablation system



ProdiGI™
traction wire, traction magnet, and
multi-functional electrosurgical knife



These images do not represent all components of the system.





SharkCore™
FNB needle



Beacon™
FNF pre-loaded needle



Beacon™
FNA needle



Emprint™ SX
ablation platform



Esophageal and gastric products

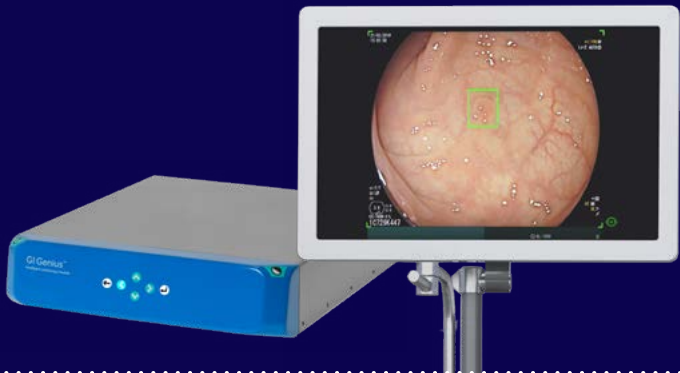
EUS and ablation products

Colorectal products

GI bleeding and chronic disease products



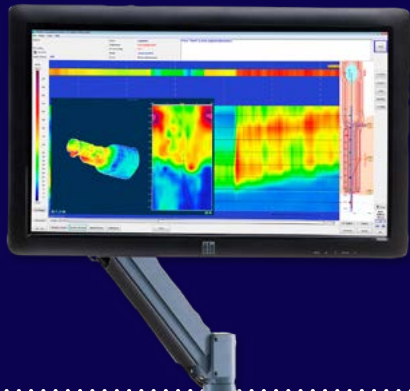
GI Genius™
intelligent endoscopy module



PillCam™
COLON 2 capsule



ManoScan™
AR high resolution manometry system



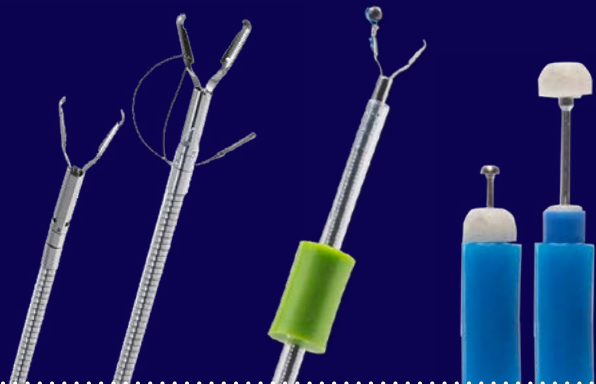
HET™
bipolar system



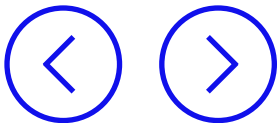
Eleview®*
submucosal injectable composition



ProdiGI™
traction wire, traction magnet, and multi-functional electrosurgical knife



These images do not represent all components of the system.



Esophageal and gastric products

EUS and ablation products

Colorectal products

GI bleeding and chronic disease products



PillCam™
SB3 capsule



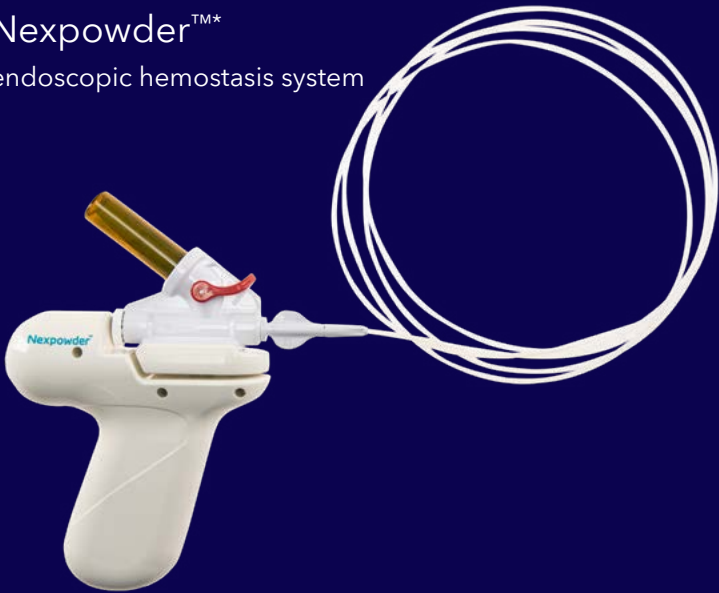
PillCam™
patency capsule



PillCam™
Crohn's capsule



Nexpowder™*
endoscopic hemostasis system



Barrx™
SB RFA endoscopic catheter



These images do not represent all components of the system.

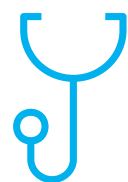
Service that goes beyond the solution

At Medtronic, we want to help you strengthen your business and provide compassionate patient care with confidence. That requires dedication, not just a device.

We'll collaborate with you to eliminate barriers and expand your ability to deliver early detection and treatment through:



Reimbursement support
to help you work
effectively and efficiently



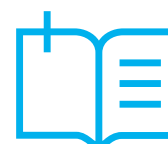
**Medical science
data resources**
to bring you reliable,
valuable information



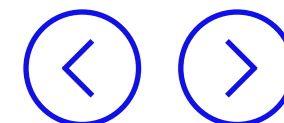
Clinical education
to help keep you current
on the latest evidence



Product support
to help you when
you need it



Disease-awareness materials
to help raise awareness of the
impact of GI diseases in the U.S.



Medtronic

For more information,
visit [medtronic.com/gi](https://www.medtronic.com/gi)
or contact your
Medtronic representative.

Visit website



Medtronic GI global headquarters
3062 Bunker Hill Lane
Santa Clara, CA 95054
USA

Customer service
1-800-448-3644

[medtronic.com/gi](https://www.medtronic.com/gi)

Caution: Federal law restricts these devices to sale by or on the order of a licensed healthcare practitioner. Rx only.

Risk Information: Similar to most procedures, the products featured here have inherent procedure risks associated. Please refer to the individual product user manuals for detailed information.

®* Third-party brands are trademarks of their respective owners. All other brands are trademarks of a Medtronic company.

™* Third-party brands are trademarks of their respective owners. All other brands are trademarks of a Medtronic company.

¹Zutshi, Yogita. BCC Research, 2016, pp. 1-201, Gastrointestinal Therapeutics and Diagnostics: Technologies and Global Markets.; Incidence & Prevalence Database (GERD, NAFLD/NASH); World Health Organization Cancer Today Fact Sheets; U.S. Department of Health and Human Services, National Institute of Diabetes and Digestive and Kidney Diseases; American Cancer Society Cancer Facts & Figures.

US-SE-2200096EN ©2022 Medtronic. Medtronic, Medtronic logo, and Engineering the extraordinary are trademarks of Medtronic. All other brands are trademarks of a Medtronic company. Printed in the USA 07/2022

