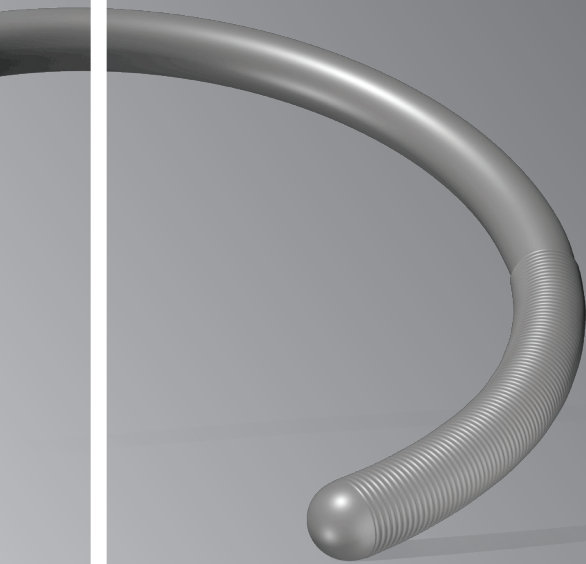


DESIGNED
TO CROSS



Provia™
Crossing Guidewire



Medtronic
Further. Together

Provia™

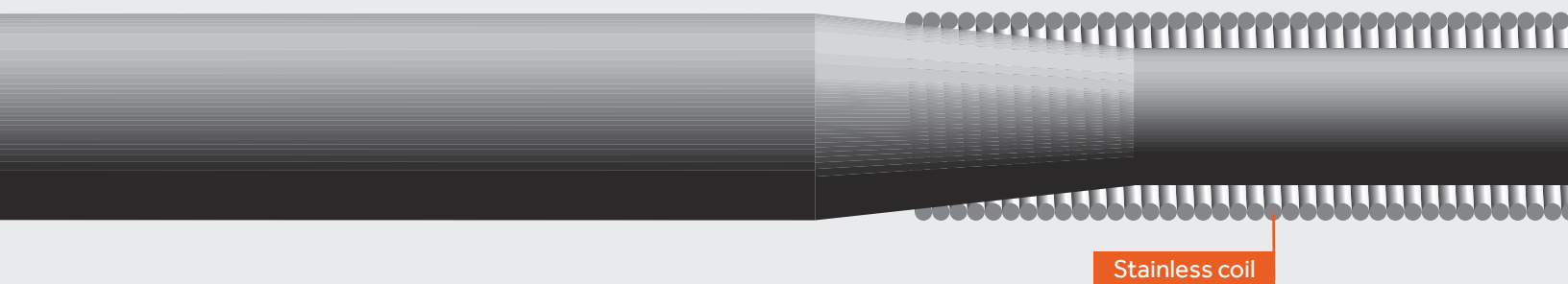
Crossing Guidewire

As a member of our coronary guidewire family, **Provia™ crossing guidewire** shows Medtronic's commitment to innovative solutions that are **designed to cross your most demanding lesions.**

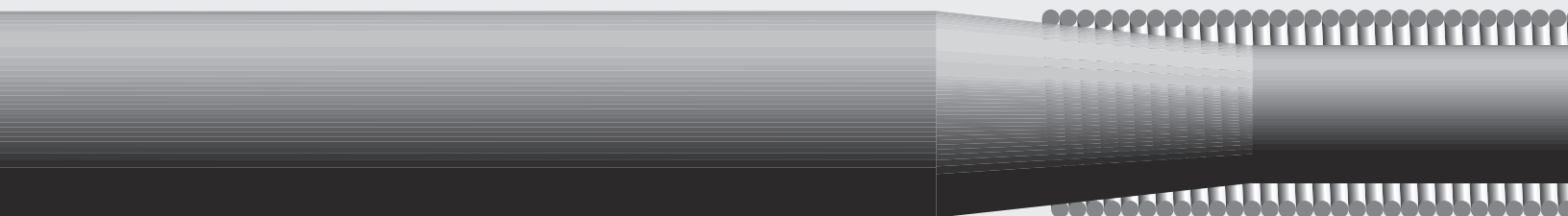
Our ProVia™ family of guidewires — available in a wide range of weights and lengths

- Provides torque control and lesion penetration
- Offers tapered tips on ProVia 9 and 12 guidewires

ProVia™ 3 and 6 Crossing Guidewires | Straight Tip (0.014 in)



ProVia™ 9 and 12 Crossing Guidewires | Tapered Tip (0.009 in) 0.009-in tapered tip designed to provide focused penetration



ACCU-CORE TECHNOLOGY OFFERS YOU:

TORQUE PERFORMANCE

Our core wire process is designed to provide torque performance to control and direct the wire.

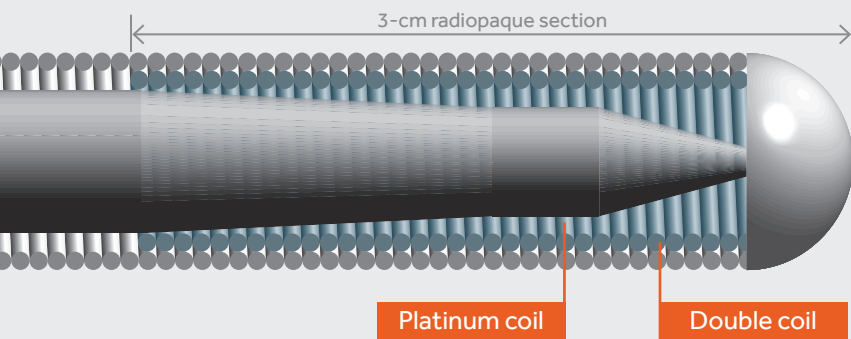
TACTILE FEEL AND CROSSABILITY

The rounded tip and body provide control.

ACCU-CORE TECHNOLOGY



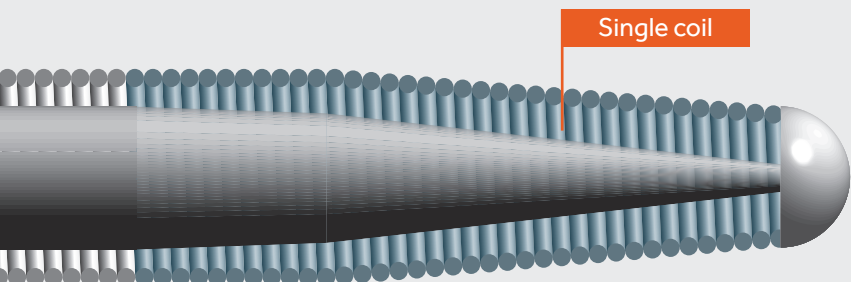
PREVIOUS DESIGN



Nonhydrophilic tip

ADDITIONAL FEATURES

- 1-mm noncoated tip
- Femoral (proximal) markers on wire, 90 cm and 100 cm from distal tip
- DOC™* compatible proximal ends on 180-cm wires



Nonhydrophilic tip

A **superior** feel and performance you can **depend** on

A choice of two coatings to meet your needs — Available in Pro/Pel™ silicone coating or Hydro-Track™ hydrophilic coating, for a more lubricious wire without increasing tip stiffness.

Ordering Information — Contact your Medtronic sales representative.

Product	Product Code	Size (g)	Length (cm)	Coating	Tip
ProVia™ 3 Guidewire	3PROV180HS	3	180	Hydro-Track™	Straight tip
	3PROV180SS	3	180	Pro/Pel™	Straight tip
	3PROV300HS	3	300	Hydro-Track™	Straight tip
	3PROV300SS	3	300	Pro/Pel™	Straight tip
ProVia™ 6 Guidewire	6PROV180HS	6	180	Hydro-Track™	Straight tip
	6PROV180SS	6	180	Pro/Pel™	Straight tip
	6PROV300HS	6	300	Hydro-Track™	Straight tip
	6PROV300SS	6	300	Pro/Pel™	Straight tip
ProVia™ 9 Guidewire	9PROV180HS	9	180	Hydro-Track™	Tapered tip
	9PROV180SS	9	180	Pro/Pel™	Tapered tip
	9PROV300HS	9	300	Hydro-Track™	Tapered tip
	9PROV300SS	9	300	Pro/Pel™	Tapered tip
ProVia™ 12 Guidewire	12PROV180HS	12	180	Hydro-Track™	Tapered tip
	12PROV180SS	12	180	Pro/Pel™	Tapered tip
	12PROV300HS	12	300	Hydro-Track™	Tapered tip
	12PROV300SS	12	300	Pro/Pel™	Tapered tip

Note: All guidewires are 0.014-in wires, and 180-cm wires are DOC™* compatible.



For further information, please call and/or consult Medtronic at the toll-free numbers or websites listed.

Medtronic
3576 Unocal Place
Santa Rosa, CA 95403
USA
Tel: 707.525.0111

LifeLine Customer Support
Tel: 877.526.7890
Tel: 763.526.7890

Product Services
Tel: 888.283.7868
Fax: 800.838.3103

Important Information

Prior to use, refer to the *Instructions for Use* supplied with these devices for indications, contraindications, side effects, suggested procedure, warnings and precautions.

Indications for Use

Medtronic guide wires are steerable guide wires that are used for the introduction and placement of diagnostic or interventional devices in the coronary and peripheral vasculature and may be used to reach and cross a target lesion. Medtronic guide wires are not intended for use in cerebral vasculature. Medtronic steerable exchange guide wires are used to facilitate the substitution of one diagnostic or interventional device for another.

Potential Adverse Events

The following complications may be associated with the use of guide wire devices; excessive bleeding, air embolism, ischemia, hematoma at the puncture site, infection, vessel spasm, vascular thrombosis and vessel dissection and perforation.

CAUTION:

Federal (USA) law restricts these devices to sale by or on the order of a licensed healthcare practitioner. See package inserts for full product information.

Please contact your local Medtronic sales representative for more information.

Test data on file at Medtronic. Bench test results may not be indicative of clinical performance.

© 2017 Medtronic. All rights reserved. Medtronic, Medtronic logo and Further, Together are trademarks of Medtronic.™* Third-party brands are trademarks of their respective owners. All other brands are trademarks of a Medtronic company. For distribution in the USA only. UC201707398EN 8/17