

Medtronic

Cross your way

Medtronic offers a robust crossing portfolio toolkit to help you confidently navigate tortuous vasculature and cross complex lesions. No matter your preferred crossing method, Medtronic offers clinical solutions both above and below the knee.

Crossing catheters, support catheters,
guidewires, re-entry devices



Guidewires

Your guide to flexible solutions

The Medtronic family of guidewires offers various levels of support and flexibility to meet your clinical needs.

Nitrex™ guidewire

The Nitrex™ guidewires provide tailored access solutions in navigating torturous anatomy and crossing challenging lesions.



Nitinol core:

- Outstanding flexibility
- Durable kink resistance

Gold tungsten tip:

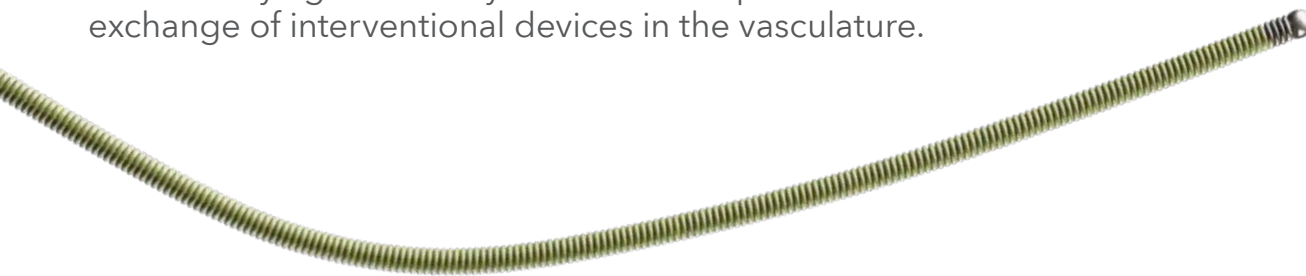
- Atraumatic
- Smooth deliverability
- Radiopaque tip

Silicone coating:

- Ideal tactile feel
- Optimal steerability

Wholey™ guidewire system

The Wholey™ guidewire system assists in placement and exchange of interventional devices in the vasculature.



Stainless steel coil:

- Optimal strength and support
- 1:1 torque

Platinum tungsten coil tip:

- Shapeable
- Atraumatic
- Highly visible

PTFE precoating:

- Consistent and smooth coating

155 cm extension system:

- Quick and precise exchange
- 145 cm and 175 cm Wholey™ guidewire compatible

Support catheters

Crossability, visibility, choice

The TrailBlazer™ support catheter family, available in straight and angled tips, delivers reliable pushability and visibility.

TrailBlazer™ support catheter

Nonbraided catheter:

Enhanced trackability for efficient crossing

Translucent shaft:

Allows visualization within catheter

Straight tip:

Enables optimal vessel access and case support

Hydrophilic coating on distal 40 cm:

For smooth tracking through vasculature

Three embedded marker bands:

Aids in the positioning of the catheter

Tapered low profile tip:

Allows for low lesion entry for crossing

TrailBlazer™ angled support catheter

Braided catheter:

Provides robust pushability to get through tough lesions

Telescoping:

0.014" and 0.018" angled catheter can be placed through 0.035" catheter for extended reach and pushability

Angled tip:

Allows for directionality for vessel selection and lesion access

TrailBlazer™ support catheter

	Minimum guide sheath (F)	Minimum introducer sheath (F)	Markerband space (mm)	Product number			
				65 cm	90 cm	135 cm	150 cm
0.014"	5	4	15			SC-014-135	SC-014-150
0.018"	5	4	15		SC-018-090	SC-018-135	SC-018-150
0.035"	6	5	50	SC-035-065	SC-035-090	SC-035-135	SC-035-150

TrailBlazer™ angled support catheter

	Minimum guide sheath (F)	Minimum introducer sheath (F)	Markerband space (mm)	Size outer diameter (in)	Product number			
					65 cm	90 cm	135 cm	150 cm
0.014"	5	4	15	0.030 (2.3F)		ASC-014-090	ASC-014-135	ASC-014-150
0.018"	5	4	15	0.034 (2.6F)		ASC-018-090	ASC-018-135	ASC-018-150
0.035"	5	4	50	0.056	ASC-035-065	ASC-035-090	ASC-035-135	ASC-035-150

Crossing catheter

Finesse at your fingertips

The Viance™ crossing catheter is designed to efficiently cross chronic total occlusions via the true lumen. Without the need for battery operated or capital equipment, the Viance™ catheter allows the control of crossing to remain all in your hands.

Viance™ crossing catheter

OTW 0.014" guidewire compatible:

Allows for above the knee and below the knee crossing

Low profile atraumatic tip:

Designed for smooth crossing and minimizes risk of perforation

Multiwire coiled shaft:

Provides 1:1 torque

Fast-spin torque handle:

Allows for tactile, self-controlled spinning motion enabling the Viance™ catheter tip to find its ways through the lesion

Ratchet:

Audible feedback mechanism that helps ensure torque is continuously transferring

Viance™ crossing catheter

Product catalog number	Description	Working length (cm)	Guidewire compatibility (in)	Crossing profile (max. in)	Sheath compatibility (F)
VNC-FX-150	Flexible	150	0.014	0.038	5
VNC-SD-150	Standard	150	0.014	0.038	5

Re-entry devices

Control at your fingertips

The Enteer™ re-entry system provides you with control to reliably target the true lumen from the subintimal channel above or below the knee without the need for capital equipment.

Enteer™ re-entry system

Flat shaped self-orienting balloon:

The Enteer™ catheter's unique balloon design self-orientes towards the true lumen within the subintimal space when inflated

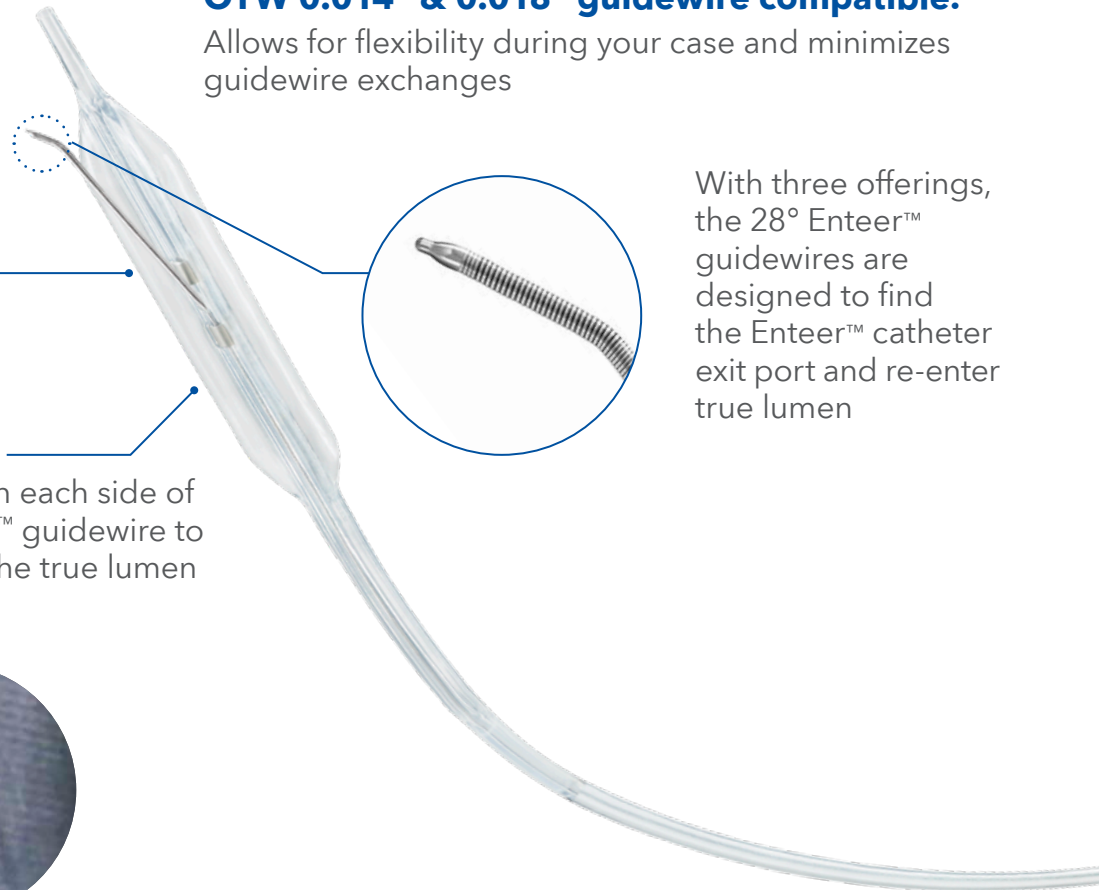
180° and offset exit ports:

Offset exit ports are located on each side of the device allowing the Enteer™ guidewire to re-enter the correct port into the true lumen

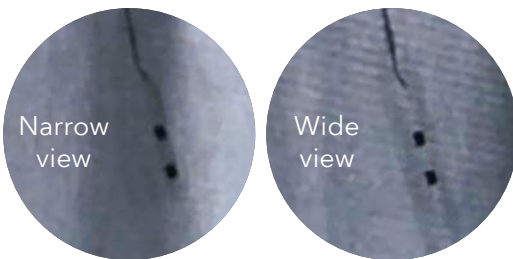
OTW 0.014" & 0.018" guidewire compatible:

Allows for flexibility during your case and minimizes guidewire exchanges

With three offerings, the 28° Enteer™ guidewires are designed to find the Enteer™ catheter exit port and re-enter true lumen



Enteer™ catheter



Enteer™ re-entry catheter

Product catalog number		Balloon size (W x H x L mm)	Working length (cm)	Guidewire compatibility (in)	Crossing profile (max. in)	Sheath compatibility (F)
ENB-375-20-135	ATK	3.75 x 1.5 x 20	135	≤ 0.018	0.066	5
ENB-275-20-150	BTK	2.75 x 1.0 x 20	150	≤ 0.018	0.066	5

Enteer™ guidewire

Product catalog number	Description	Diameter (in)	Length (cm)	Tip reach (mm)
ENW-FX-014-300	Flexible	0.014	300	1.5
ENW-SD-014-300	Standard	0.014	300	1.5
ENW-SF-014-300	Stiff	0.014	300	2.5

ATK stands for: above the knee
BTK stands for: below the knee

Nitrex™ guidewire

Model no.	Diameter (in)	Length (cm)	Tip style	Tip length (cm)	Tip shape	Tip angle	Model no.	Diameter (in)	Length (cm)	Tip style	Tip length (cm)	Tip shape	Tip angle
0.014"							0.035" Flexible shaft						
N140801	0.014	80	INT	5	A	15°	N351451	0.035	145	INT	15	S	0°
N141802	0.014	180	INT	5	A	15°	N351452	0.035	145	INT	15	A	45°
N143001	0.014	300	INT	5	A	15°	N351803	0.035	180	INT	15	S	0°
0.018"							0.035" Stiff shaft						
N180601	0.018	60	INT	5	S	0°	N350801	0.035	80	INT	9	S	0°
N180603	0.018	60	INT	7	S	0°	N351453	0.035	145	FLOP	14	A	45°
N180801	0.018	80	STD	2	S	0°	N351454	0.035	145	INT	9	S	0°
N180802	0.018	80	INT	5	A	15°	N354455	0.035	145	FLOP	14	S	0°
N181804	0.018	180	STD	2	S	0°	N351804	0.035	180	INT	9	S	0°
N181805	0.018	180	INT	5	A	15°	N351805	0.035	180	STD	4	A	45°
N181806	0.018	180	FLOP	20	A	15°	N352602	0.035	260	FLOP	14	S	0°
N183001	0.018	300	STD	2	S	0°	N352603	0.035	260	STD	4	A	45°
N183002	0.018	300	INT	5	A	15°	N352604	0.035	260	INT	9	S	0°
0.025"							0.035" Stiff shaft						
N251801	0.025	180	INT	8	A	15°	N353001	0.035	300	INT	9	S	0°
N251802	0.025	180	STD	2	S	0°	N354002	0.035	400	INT	9	S	0°
N251601	0.025	260	INT	8	A	15°							

Nitrex™ sold 3/pkg
 Specifications Nominal
 Tip shape: A = angled tip, S = straight tip
 Tip style: INT = intermediate, STD = standard tip, FLOP = floppy tip
 Torque device included with 0.014" and 0.018" Nitrex guidewires.

Wholey™ guidewire system

Model no.	Stiffness profile	Tip style	Diameter (in)	Length(cm)
WWFS35145	Floppy	Straight	0.035	145
WWFS35175	Floppy	Straight	0.035	175
WWFS35260	Floppy	Straight	0.035	260
WWFS35300	Floppy	Straight	0.035	300
WWIJ35145	Intermediate	Modified J	0.035	145
WWIJ35175	Intermediate	Modified J	0.035	175
WWIJ35260	Intermediate	Modified J	0.035	260
WWIJ35300	Intermediate	Modified J	0.035	300
WWSS35145	Standard	Straight	0.035	145
WWSS35175	Standard	Straight	0.035	175
WWSS35260	Standard	Straight	0.035	260
WWSS35300	Standard	Straight/shapeable	0.035	300
WWES35001 (Extension system)	NA	NA	0.035	155
WWTD35001 (Kendall™ torque device)	NA	NA	0.025" - .038"	

Wholey™ guidewires and extension system sold 3/pkg
 Kendall™ torque device sold 10/pkg

Indications, contraindications, warnings, and instructions for use can be found in the product labeling supplied with each device. **CAUTION:** Federal (USA) law restricts these devices to sale by or on the order of a physician.

UC202403916 EN ©2023 Medtronic. All rights reserved. Medtronic, Medtronic logo, and Engineering the extraordinary are trademarks of Medtronic. All other brands are trademarks of a Medtronic company. 11/2023