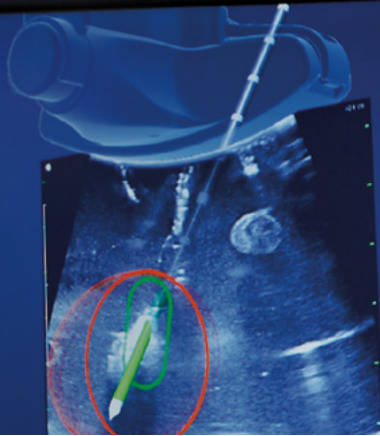


Medtronic

Preserve their future

Successful management of non-resectable liver tumors is about more than what you remove - it's about what you leave behind, too

Emprint™ SX
ablation platform
with surgical
navigation
application



Emprint™ HP ablation generator

The Emprint™ product line supports your journey from careful planning to predictable success when treating unresectable liver tumors.



The Emprint™ SX ablation platform

Making ablation simpler

Emprint™ SX ablation platform with surgical navigation application

The Emprint™ SX ablation platform with surgical navigation application is the only ablation technology with integrated real-time 3-D navigation. Real-time 3-D navigation is shown to improve your antenna placement accuracy and time.¹

SKU	Brand	Descriptor
CASYS100	Emprint™ SX	Ablation platform with Thermosphere™ technology
CAFG1	Emprint™ SX	Field generator
CAFGCART1	Emprint™ SX	Field generator cart
CAFGSP1	Emprint™ SX	Field generator spacer
CAUS1SN	Emprint™ SX	Ultrasound surgical navigation application
CA190RC1	Emprint™	Ablation reusable cable
RFASW	Emprint™	Footswitch

Emprint™ SX with surgical navigation service plans

Emprint™ SX ablation platform with navigation application: CASYS100 + CAUS1SN	Covered items: Emprint™ SX tower, field generator, accessories, new software versions, new ultrasound and probe compatibility, performance upgrades, yearly preventative maintenance Non-covered items: Hardware upgrades, capability upgrades that require new hardware and software
80465	Emprint™ SX w/surgical navigation 1 year service plan
80466	Emprint™ SX w/surgical navigation 2 year service plan
80467	Emprint™ SX w/surgical navigation 3 year service plan

Emprint™ SX ablation platform

The Emprint™ SX ablation platform with Thermosphere™ technology delivers predictable and spherical ablation zones.² The Emprint SX ablation platform was designed for a complete and simple procedure. The HD touchscreen display and intuitive set up are intended to make the system easy to use.³

SKU	Brand	Descriptor
CASYS100	Emprint™ SX	Ablation platform with Thermosphere™ technology
CA190RC1	Emprint™	Ablation reusable cable
RFASW	Emprint™	Footswitch

Emprint™ SX ablation platform without surgical navigation service plans

Emprint™ SX ablation platform with Thermosphere™ technology: CASYS100	Covered items: Emprint™ SX tower, accessories, new software versions, performance upgrades, yearly preventative maintenance Non-covered items: Hardware upgrades, capability upgrades that require new hardware and software
80475	Emprint™ SX 1 year service plan
80476	Emprint™ SX 2 year service plan
80477	Emprint™ SX 3 year service plan

The Emprint™ system

Making ablation simpler

Emprint™ ablation system with Emprint™ HP ablation generator

The Emprint™ HP ablation generator can achieve complete tumor coverage, maximizing ablative margin while minimizing ablation volume⁴ - all with a single antenna. It enables a minimally invasive procedure with:

Few
side-effects⁵

Fast
recovery
time^{6,7}

Ablation
zone
accuracy⁸

and
predictable
margins⁴

This procedure provides immediate, repeatable results⁸ - to help you achieve and maintain control of your patient's disease.⁹

SKU	Brand	Product	Descriptor
CARTHP	Emprint™ HP	Ablation cart	Easy to set up and use, the ablation cart has a 17x19 inch footprint to save space in the procedural suites.
CAGENHP	Emprint™ HP	Ablation generator with Thermosphere™ technology	150W generator has an intuitive user interface and customizable power and time settings for simplified set-up and operation.
CAPUMP1	Emprint™	Ablation pump	A pump for efficient antenna cooling to minimize thermal conductivity for increased control and predictability.
CA190RC1	Emprint™	Ablation reusable cable	A high efficiency reusable cable optimizes power delivery and ablative performance.
RFASW	Emprint™	Ablation footswitch	Footswitch allows easy activation to save overall procedure time.

Emprint™ service plans

Emprint™ HP
ablation
generator:
CAGENHP

Covered items: Emprint™ generator, accessories, performance upgrades, yearly preventative maintenance

Non-covered items: Hardware upgrades, capability upgrades that require new hardware and software

80478 Emprint™ 1 year service plan

80473 Emprint™ 2 year service plan

80474 Emprint™ 3 year service plan



Preserve their future^{11,12}

Emprint™ SX
ablation platform
with surgical
navigation



*Navigation software provided by InnerOptic Technology, Inc.

References

1. Sastry, AV, Swet, JH, Murphy KJ, et al. A novel 3-dimensional electromagnetic guidance system increases intraoperative microwave antenna placement accuracy. *HPB* 2017 Dec;19(12):1066-1073.
2. Based on internal porcine test report #R0043973, In vivo performance testing of the Emprint™ microwave ablation system in a porcine model. November 2013.
3. Medtronic internal document #RE00097926. Summary of revolution user validation survey results. 2017.
4. Vogl TJ, Basten LM, Nour-Eldin NA, et al. Evaluation of microwave ablation of liver malignancy with enabled constant spatial energy control to achieve a predictable spherical ablation zone. *Int J Hyperthermia*. 2018;34(4):492-500.
5. Chen MS, Li JQ, Zheng Y, Guo RP, Liang HH, Zhang YQ, Lin XJ, Lau WY. A prospective randomized trial comparing percutaneous local ablative therapy and partial hepatectomy for small hepatocellular carcinoma. *Ann Surg*. 2006 Mar;243(3):321-8.
6. Hocquelet A, Balageas P, Laurent C, Blanc JF, Frulio N, Salut C, Cassinotto C, Saric J, Possenti L, Bernard PH, Montaudon M, Trillaud H. Radiofrequency ablation versus surgical resection for hepatocellular carcinoma within the Milan criteria: A study of 281 Western patients. *Int J Hyperthermia*. 31 (7), 749-57. 2015.
7. Zhang M, Ma H, Zhang J, He L, Ye X, Li X. Comparison of microwave ablation and hepatic resection for hepatocellular carcinoma: a meta analysis. *Onco Targets Ther*. Oct 3;10:4829-4839. 2017.
8. De Cobelli F et al. Microwave ablation of liver malignancies: comparison of effects and early outcomes of percutaneous and intraoperative approaches with different liver conditions. *Med Oncol* 2017 Apr 34(4):49.
9. Takahashi H et al. Local Recurrence After Microwave Thermosphere Ablation of Malignant Liver Tumors: Results of a Surgical Series. *Surgery* 2018 Apr;163(4):709-713.
10. Based on internal report RE00142967, Emprint™ Procedure Planning Application US Pilot Report, dated Sept 2018 (Data on file.)
11. Ruers T, Van Coevorden F, Punt C, Pierie JP, Borel-Rinkes I, et al. Local treatment of unresectable colorectal liver metastases: Results of a randomized phase II trial. *JNCI J Natl Cancer Inst* (2017) 109(9): djx015.
12. Thomas M, Drake, Ewen M, Harrison. Malignant liver tumours. *Surgery*. 2017;35(12):707-714.

5920 Longbow Drive
Boulder, CO 80534

800.255.8522
303.581.6898

medtronic.com/gi

Medtronic