







BOWEL PREPARATION AND BOOSTS

PillCam™ COLON 2 system

Medtronic

Instruct the patient on proper diet and bowel prep for the day prior to the procedure and the day of the procedure. Emphasize the importance of sufficient hydration.

1 Day Prior	Day of Procedure	
<p>Begin clear liquid diet only*</p> <p>(~64 oz of clear liquids should be consumed throughout the day)</p> 	<p>7 a.m.–9 a.m.</p> <p>Ingest 2 liters PEG then NPO</p> 	<p>10 a.m.</p> <p>Ingest PillCam™ COLON 2 capsule with a small cup of water (NPO after ingestion)</p> 
	<p>Alert 0</p>	<p>No small bowel detection (1 hour after capsule ingestion): Reglan®* 10 mg tablet with a small sip of water (resume NPO status)</p>
<p>7 p.m.–9 p.m.</p> <p>2 liters PEG (Ingest within 2 hours)</p> 	<p>Alert 1</p>	<p>Small bowel detection: 6 oz SUPREP®* liquid added to 10 oz water, drink additional 34 oz water (resume clear liquids)</p>
	<p>Alert 2</p>	<p>Capsule detection (3 hours after Alert 1): 3 oz SUPREP®* liquid added to 5 oz water, drink additional 34 oz water (continue clear liquids)</p>
<p>Continue clear liquids*</p> 	<p>Alert 3</p>	<p>Capsule detection (2 hours after alert 2): Bisacodyl 10 mg suppository</p>
	<p>Alert 4</p>	<p>Capsule detection (2 hours after Alert 3): Light meal and continue clear liquids</p>
	<p>Alert 5</p>	<p>End of procedure (no capsule detection): Remove and return all equipment as instructed</p> 

***Acceptable clear liquids include:**

- Apple and white grape juice
- Tea or black coffee
- Water
- Clear carbonated or sports drinks
- Popsicles or gelatin
- Bubblegum or hard candy (hard candy should be dissolved slowly)

These steps will occur in all PillCam™ COLON 2 procedures

NOTE: NO RED OR PURPLE COLORS. NO BROTH OR SOUP.

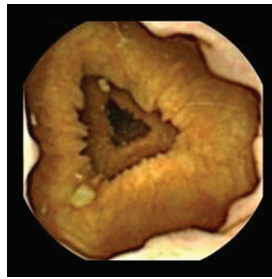
BOWEL PREPARATION AND BOOSTS

PillCam™ COLON 2 system

Medtronic



3. Ascending Colon



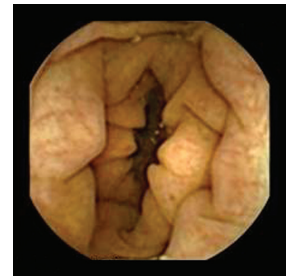
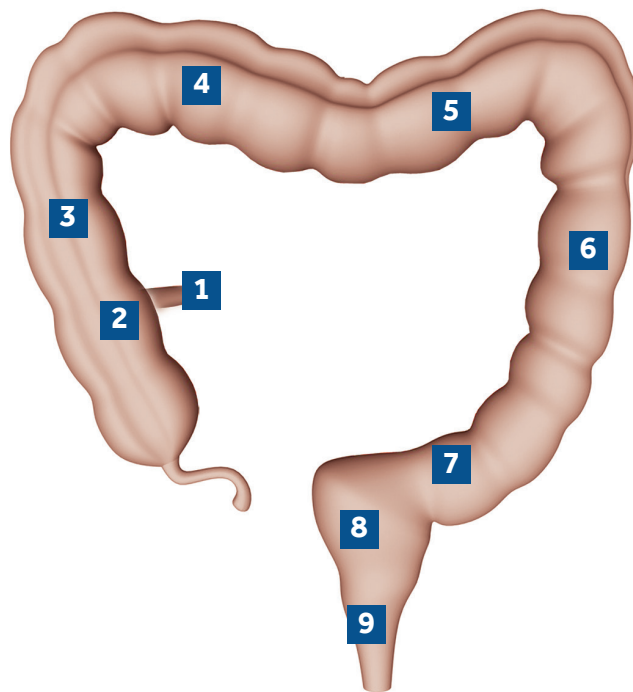
4. Transverse Colon



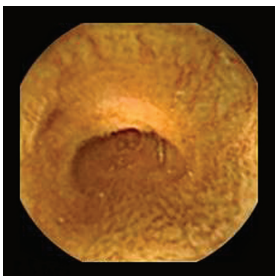
5. Transverse Colon



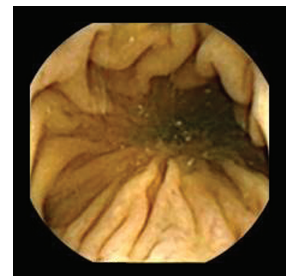
2. Ileocecal Valve



6. Descending Colon



1. Terminal Ileum



7. Sigmoid Colon



9. Anus



8. Rectum

Caution: Federal law restricts this device to sale by or on the order of a licensed healthcare practitioner. Rx only.

Risk Information: The risks of the PillCam™ COLON 2 capsule include capsule retention, aspiration, and skin irritation, perforation, obstruction, mucosal injury, and bleeding. The risks associated with colon preparation are allergies or other known contraindications to any preparation agents or medications used for the PillCam™ COLON 2 system regimen, according to laxative medication labeling and per physician discretion. Medical, endoscopic, or surgical intervention may be necessary to address any of these complications, should they occur. After ingesting the PillCam™ COLON 2 capsule, and until the capsule is excreted, patients should not be near any source of powerful electromagnetic fields, such as one created near an MRI device. The safety of PillCam™ COLON 2 capsule has not been established in patients under the age of 18. Please refer to the product user manual for detailed information.