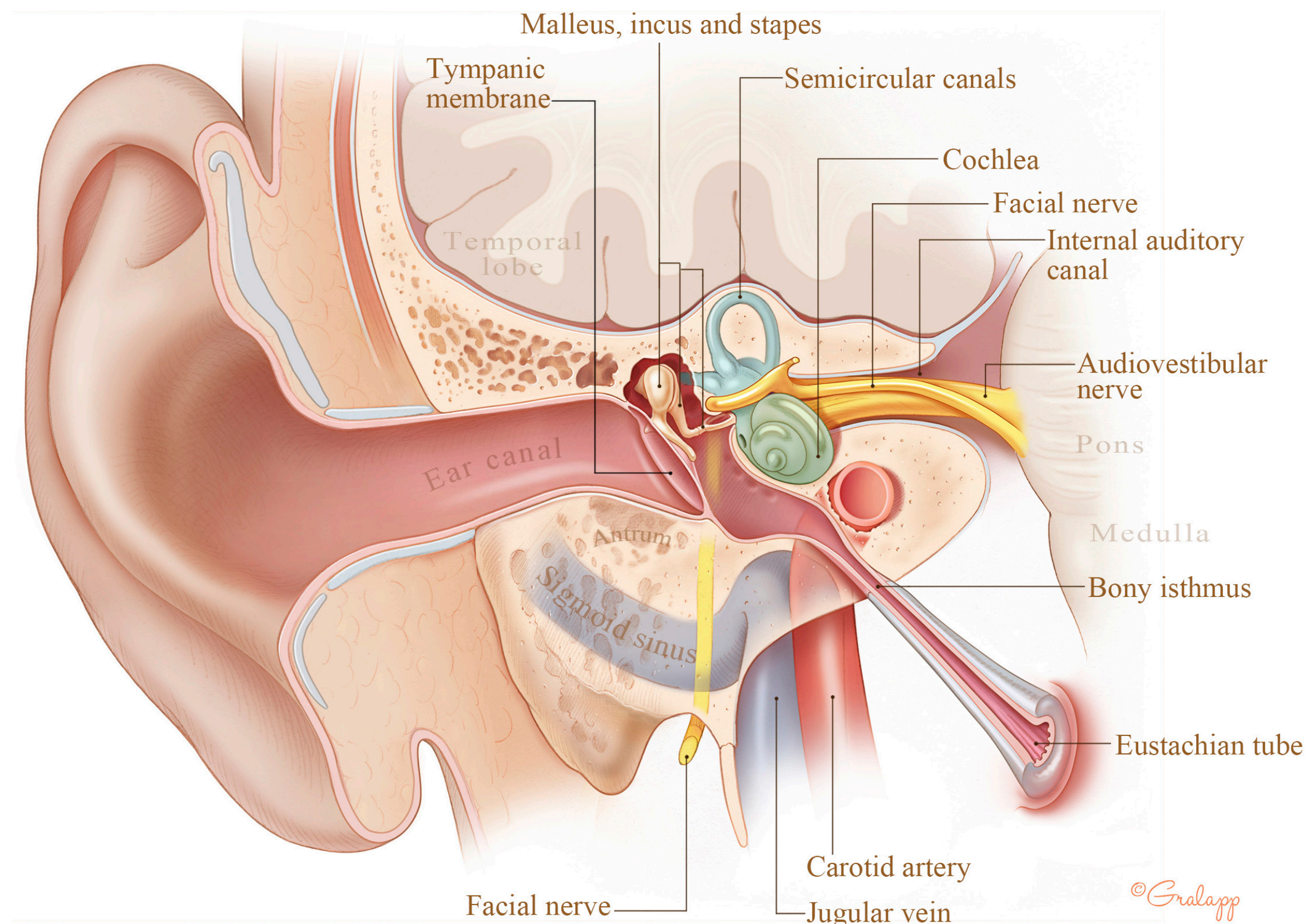


## Anatomy of the ear



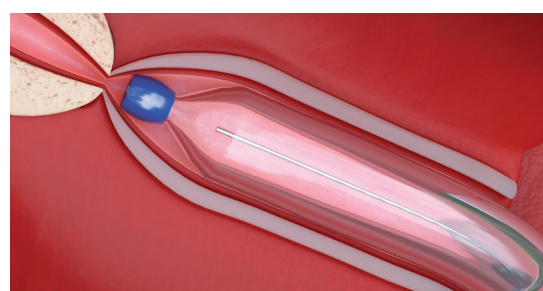
### Balloon dilation of the Eustachian tube

#### ① Placing



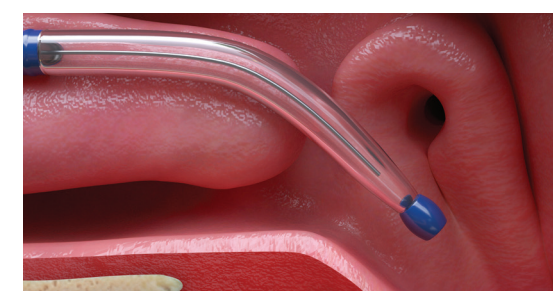
Insert the balloon into the nasal passage with the tip facing inferiorly and guide the tip to the opening of the Eustachian tube.

#### ② Inflating



Advance the balloon catheter into the Eustachian tube and inflate the balloon for two minutes.

#### ③ Deflating



Fully deflate the balloon catheter and remove the balloon from the Eustachian tube.