

Medtronic

Sphere-9™ Catheter

All-in-one: map | ablate | validate

The paradigm shift you've been looking for

Safe and durable lesions^{1,2}

Efficient, zero exchange workflow

Complete procedures in less time³

Unparalleled versatility



One single catheter with **dual-energy** capabilities—RF and PF



Nine **mini electrodes** and central electrode provide HD mapping utilizing high-fidelity, **close-unipolar** EGMs⁴

Absolute control



Nine thermocouples provide **real-time tissue temperature** monitoring for safe energy delivery



9 mm conformable lattice tip provides **tissue contact and stability**

Optimized workflow



Safe^{3,4} and effective^{3,4} procedures in less time³ using fewer **wide-area focal lesions**^{1,4}



8 Fr, bidirectional catheter with built-in controller for **direct mapping system interaction**



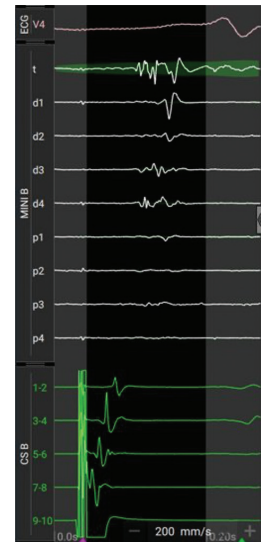
Map

Create high density maps utilizing **close-unipolar** technology.

Close unipolar technology is a novel way of acquiring intracardiac information by:

- Maintaining wavefront morphology
- Reducing far-field potentials

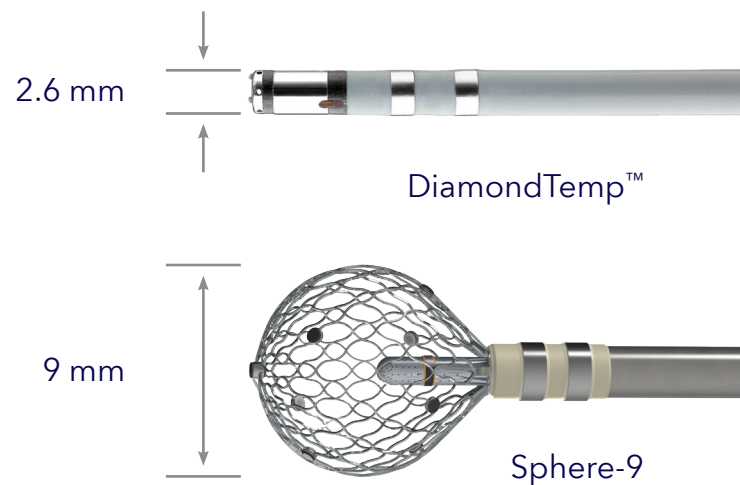
The combination of a low noise floor, small mini electrode surface area, and proximity of central reference electrode provides high fidelity and discrete EGMs.



Ablate

Experience a new paradigm leveraging **wide area focal design**

- Ablation electrode has an **effective surface area 10x larger** than standard irrigated ablation catheters³



Validate

- Move instantaneously from ablation to validation through a **single transeptal access and zero exchange workflow**
- Create activation and voltage maps using the same catheter to **rapidly identify electrical breakthrough immediately** after ablation

For Technical Support:
Email: rs.casemeatechservice@medtronic.com
Direct Number: +31455664621
Toll Free Number: 00800-22556338

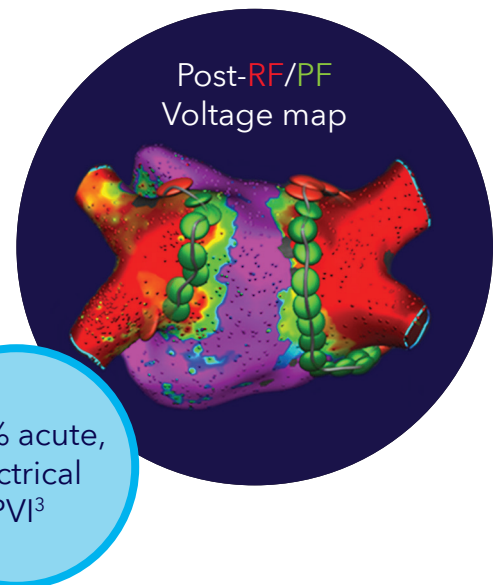
Formal product name in IFUs may differ from what is in this document:
Sphere-9™ Catheter = Sphere-9™ Mapping and Ablation Catheter

Brief statement: See the device manual for detailed information regarding the instructions for use, indications, contraindications, warnings, precautions, and potential adverse events. For further information, contact your local Medtronic representative or consult the Medtronic website at medtronic.eu.

UC202312339-affera-sell-sheet-en-we-9182641
©2023 Medtronic. All Rights Reserved. Printed in Europe.

Europe
Medtronic International Trading Sàrl.
Route du Molliau 31
Case postale
CH-1131 Tolochenaz
medtronic.eu
Tel: +41 0 21 802 70 00
Fax: +41 0 21 802 79 00

United Kingdom/Ireland
Medtronic Limited
Building 9
Croxley Green Business Park
Hatters Lane
Watford
Herts WD18 8WW
medtronic.co.uk
Tel: +44 0 1923 212213
Fax: +44 0 1923 241004



References:

- ¹ Reddy VY, Peichl P, Anter E, et al. B-PO01-055 Atrial Fibrillation Ablation Using a Focal Lattice-tip Catheter that Toggles Between Pulsed Field and Radiofrequency Energy: Effect on the Esophagus. *Heart Rhythm*. August 2021;18(8):S73.
- ² CR-00014 Rev C. Medtronic data on file.
- ³ Reddy VY, Anter E, Rackauskas G, et al. Lattice-Tip Focal Ablation Catheter That Toggles Between Radiofrequency and Pulsed Field Energy to Treat Atrial Fibrillation: A First-in-Human Trial. *Circ Arrhythm Electrophysiol*. June 2020;13(6):e008718.
- ⁴ Anter E, Neuzil P, Rackauskas G, et al. A Lattice-Tip Temperature-Controlled Radiofrequency Ablation Catheter for Wide Thermal Lesions: First-in-Human Experience With Atrial Fibrillation. *JACC Clin Electrophysiol*. May 2020;6(5):507-519.