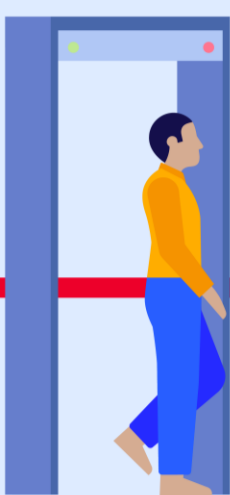


Can I go through airport security if I have a pacemaker, defibrillator, or heart monitor?

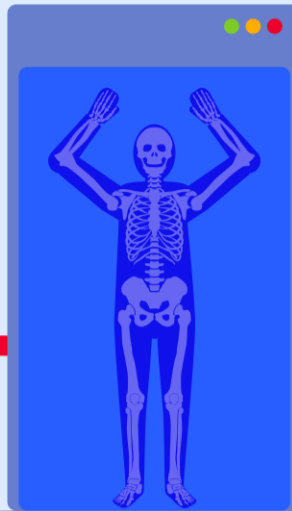
Yes

Simply walk through security archways at a normal pace.

Don't stop under or touch the archway as you pass through.



Millimeter wave/full-body scanners are safe to use as instructed.



Ask the security operator not to hold the wand directly over your device, or to swipe it repeatedly over your device.

You can show your device identification card and ask for hand-screening instead.

