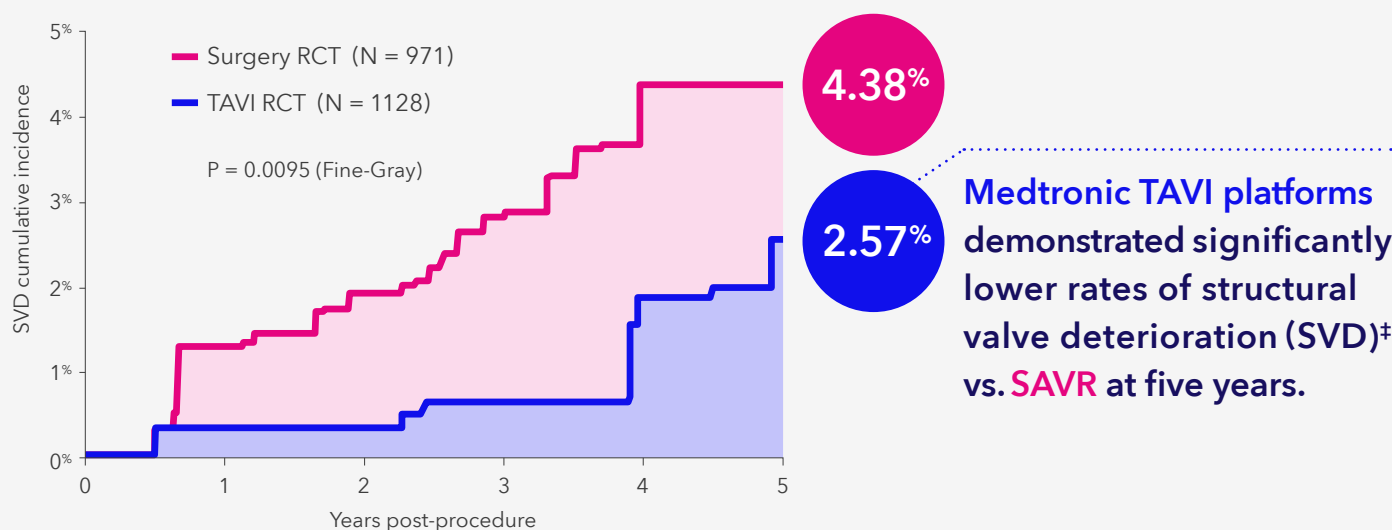


# The best TAVI vs. SAVR durability data yet.

Valve durability is important to you and your patients. It's important to us too. CoreValve™ and Evolut™ TAVI systems† are the only platforms to demonstrate a durability benefit over surgery at five years in a pooled analysis of intermediate and high-risk patients.<sup>1</sup>



† Devices used: CoreValve 88.5%/Evolut R 11.5%.

‡ Structural valve deterioration (SVD) was defined as ≥ moderate hemodynamic valve deterioration (HVD) (increase in mean gradient ≥ 10 mm Hg from discharge/30-day echo to last available echo AND mean gradient ≥ 20 mm Hg at last available echo OR new onset/increase of intraprosthesis aortic regurgitation (AR) ≥ moderate). Independent core laboratory-assessed TTEs were used (if not available, site-reported readings).

<sup>1</sup> Reardon M. 5-Year Incidence, Timing and Predictors of Structural Valve Deterioration of Transcatheter and Surgical Aortic Bioprostheses: Insights from the CoreValve US Pivotal and SURTAVI Trials. Presented at ACC 2022.

See the CoreValve™ Evolut™ R, the CoreValve™ Evolut™ PRO and the Evolut™ PRO+ device manuals for detailed information regarding the instructions for use, the implant procedure, indications, contraindications, warnings, precautions, and potential adverse events. For further information, contact your local Medtronic representative and/or consult the Medtronic website at [medtronic.eu](https://www.medtronic.com).

For applicable products, consult instructions for use on [manuals.medtronic.com](https://www.manuals.medtronic.com). Manuals can be viewed using a current version of any major internet browser. For best results, use Adobe Acrobat Reader® with the browser.

The commercial name of the Evolut™ R device is Medtronic CoreValve™ Evolut™ R System, the commercial name of the Evolut™ PRO device is Medtronic CoreValve™ Evolut™ PRO System, and the commercial name of the Evolut™ PRO+ device is Medtronic Evolut™ PRO+ System.