

Medtronic

2-in-1 tricuspid remodeling



Tri-Ad™ 2.0
Adams tricuspid
annuloplasty band



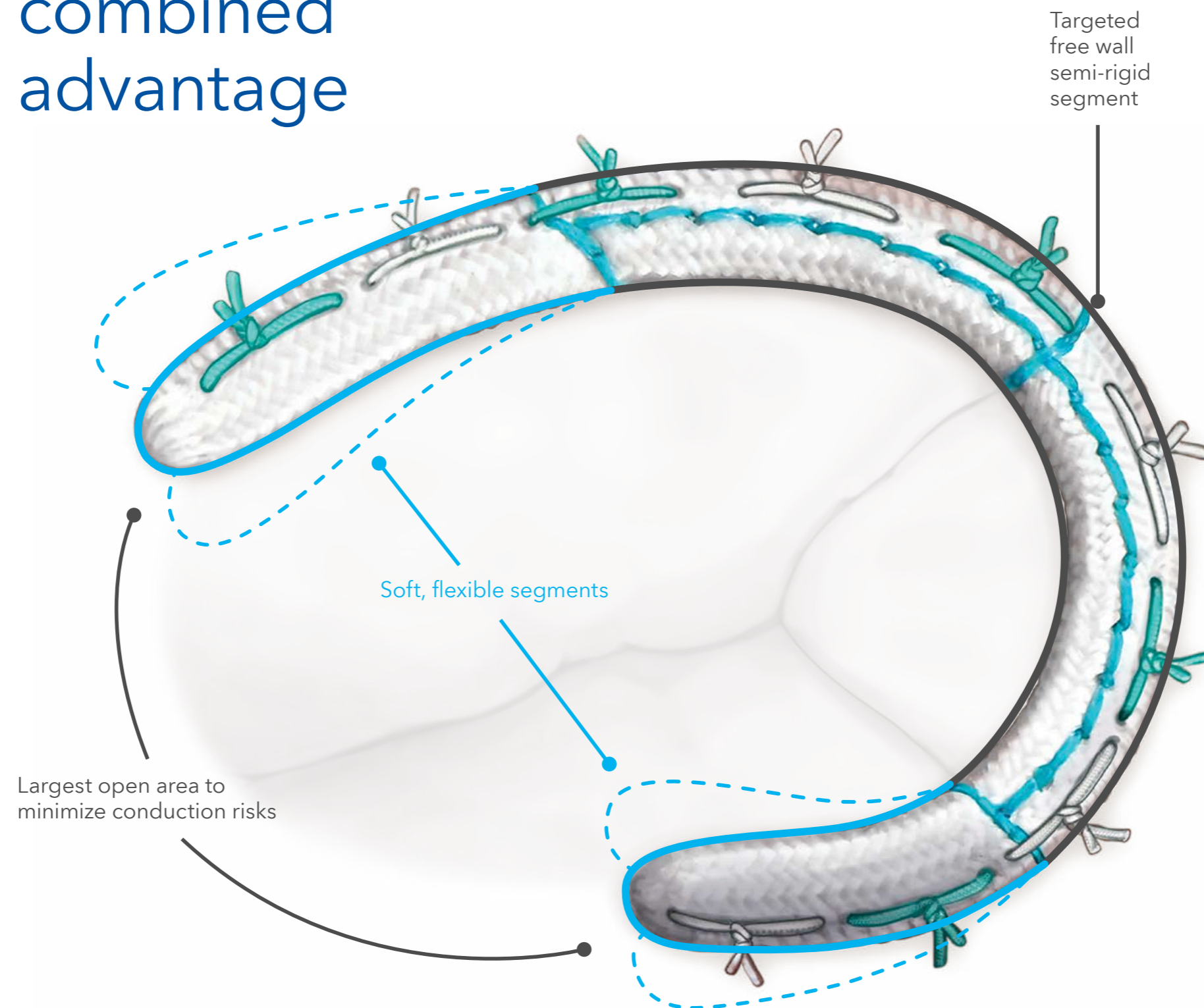
Thoughtfully
designed for
the tricuspid
anatomy

Flexible and semi-rigid combined advantage

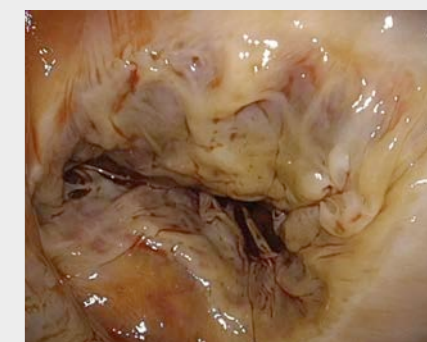
- Semi-rigid segment addresses dilation at the free wall for a durable tricuspid valve repair.¹
- Soft, flexible segments reduce the risk of band dehiscence and allow for physiologic motion.¹⁻³
- Large open area enabling industry-leading, low permanent pacemaker implantation (PPI) rates as low as 0%.^{†,2,3}



Industry-
leading, low
rates of PPI^{2,3}



Key risks of tricuspid annuloplasty include recurrent regurgitation, stenosis, and ring dehiscence.



Pre-repair



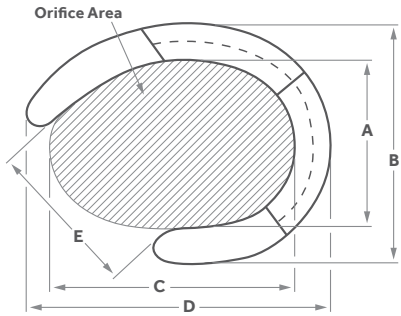
Post-repair

Photos courtesy of Dr. David Adams, Mount Sinai Hospital, New York.

[†]Results might not be indicative of results in other patient populations.

Tri-Ad 2.0 Adams tricuspid annuloplasty band, Model 900SFC

Order number	Band Size (mm)	A (mm)	B (mm)	C (mm)	D (mm)	E (mm)	Orifice area (mm ²)
900SFC226	26	17.4	25.8	25.6	33.2	15.5	365
900SFC228	28	19.4	27.6	28.1	34.9	17.1	435
900SFC230	30	20.9	29.1	30.6	37.2	18.5	502
900SFC232	32	22.3	30.7	31.5	38.2	20.0	557
900SFC234	34	24.0	32.3	34.7	41.1	20.9	654
900SFC236	36	25.5	33.8	36.3	42.9	21.9	730



Tri-Ad 2.0 accessory and ordering information

Order number	Components and accessories
T7900P	Tri-Ad 2.0 sterilization tray
7900PS	Set of six Tri-Ad 2.0 sizers (26–36 mm)
7686	Annuloplasty handle (216 mm length)
7686L	Annuloplasty handle (254 mm length)
7686XL	Annuloplasty handle (373 mm length)



To order a full kit requires a set of sizers, a tray, and typically two of the shorter-length handles (the regular and long version will fit in the tray). The optional extra-long thoracoscopic handle will not fit into the tray and is sterilized separately.

¹ Lee H, Kim J, Jung JH, Yoo JS. Mid-term outcomes of tricuspid annuloplasty using the Tri-Ad Adams tricuspid annuloplasty ring. *Interdiscip Cardiovasc Thorac Surg.* July 2024;39(1).
² Jung W, Choi JW, Hwang HY, Kim KH. Early Clinical Outcomes of Tricuspid Valve Repair with a Tri-Ad Annuloplasty Ring in Comparison with the Outcomes Using an MC3 Ring. *Korean J Thorac Cardiovasc Surg.* April 2018;51(2):92-99.
³ Milla F, Castillo JG, Varghese R, Chikwe, J, Anyanwu AC, Adams DH. Rationale and initial experience with the Tri-Ad Adams tricuspid annuloplasty ring. *J Thorac Cardiovasc Surg.* April 2012;143(4 Suppl):S71-S73.

This material should not be considered the exclusive source of information, it does not replace or supersede information contained in the device manual(s). Please note that the intended use of a product may vary depending on geographical approvals. See the device manual(s) for detailed information regarding the intended use, the (implant) procedure, indications, contraindications, warnings, precautions, and potential adverse events. For a MRI compatible device(s), consult the MRI information in the device manual(s) before performing a MRI. If a device is eligible for eIFU usage, instructions for use can be found at Medtronic's website manuals.medtronic.com. Manuals can be viewed using a current version of any major internet browser. For best results, use Adobe Acrobat® Reader with the browser. Medtronic products placed on European markets bear the CE mark and the UKCA mark (if applicable). For any further information, contact your local Medtronic representative and/or consult Medtronic's websites.

Medtronic

Europe
Medtronic International Trading Sàrl.
Route du Molliau 31
Case postale
CH-1131 Tolochenaz
www.medtronic.eu
Tel: +41 (0)21 802 70 00
Fax: +41 (0)21 802 79 00