

Peripheral embolization portfolio

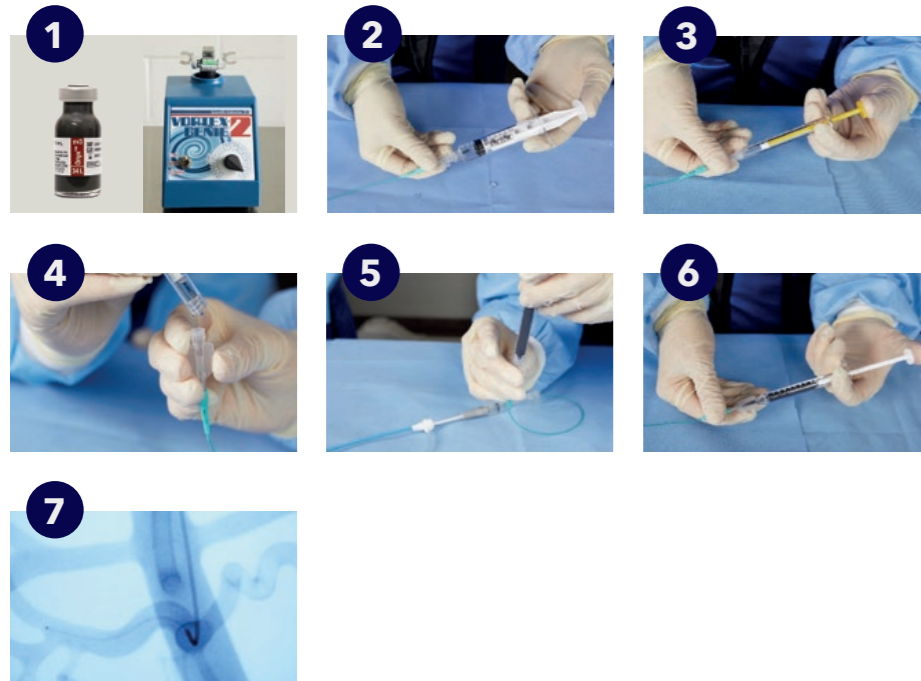
Procedural overview

Onyx™ Liquid Embolic System

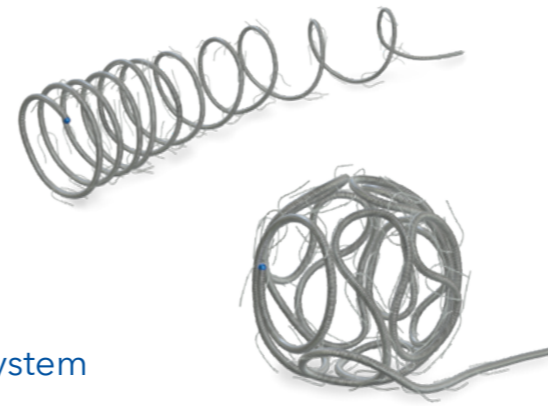


Preparation/Delivery

1. Shake Onyx™ vials for 20 minutes
2. Flush microcatheter with 10 ml of saline
3. Fill microcatheter dead space with dimethyl sulfoxide (DMSO)
4. Fill microcatheter hub with drops of DMSO
5. Immediately connect Onyx™ syringe vertically
6. Slowly inject Onyx™ at a steady rate. Do not exceed 0.3 ml/minute
7. Maintain fluoroscopic control during injection of Onyx™

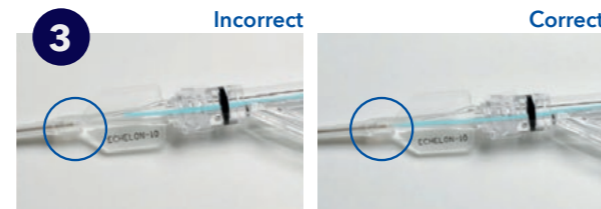


Concerto™ Detachable Coil System



Delivery

1. Push coil out of intro sheath, immerse in heparinized saline, retract coil into sheath
2. Connect rotating hemostatic valve (RHV) to hub of guide catheter
3. Insert intro sheath through RHV into hub



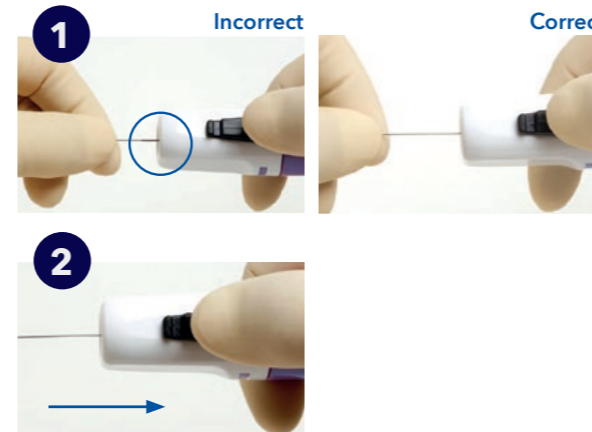
4. Tighten valve and advance coil with 1-2 cm strokes
5. Advance coil through sheath until ca. 15 cm of delivery wire remains out of sheath. Do not attempt to advance the entire pusher into sheath. This may cause kinking
6. Remove sheath and continue to advance the coil



7. Activate fluoroscopy to confirm the positioning of the coil prior to advancing coil into target anatomical location

Detachment

1. Advance instant detacher (ID) over end of the implant pusher until black positive load indicator is fully inserted in ID funnel
2. Detach implant by retracting thumb slide back until it stops and clicks



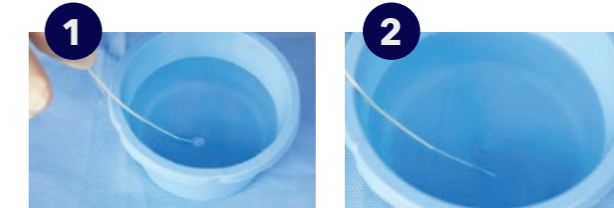
3. Check detachment under fluoroscopy. Retract implant pusher. Alternatively, detach implant by kinking the wire at the smaller black wire strap. Kink until you see the wire is broken and you can pull a small transparent wire

MVP™ Micro Vascular Plug System



Preparation

1. Immerse a few cm of the delivery wire and the MVP™ device in heparinized saline
2. Pull at the proximal end of the delivery wire until distal tip of the MVP™ is just covered by the intro sheath



Delivery

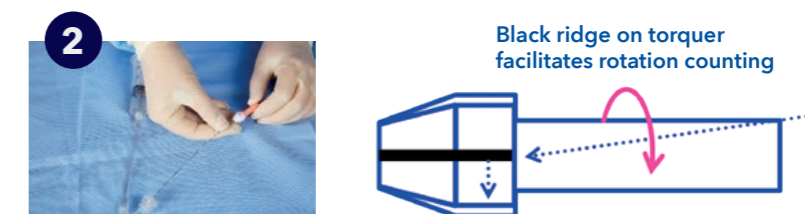
1. Connect rotating hemostatic valve (RHV) to hub of guide catheter
2. Insert intro sheath through RHV and into hub
3. Push delivery wire in 2-3 cm strokes until ca. 15 cm of delivery wire remains out of intro sheath
4. Remove intro sheath



5. Advance plug until distal platinum marker of the MVP™ is aligned with (micro)catheter distal marker band. Check under fluoroscopy
6. Unsheath the MVP™ by maintaining forward pressure on delivery wire while pulling (micro)catheter back slowly

Detachment

1. Attach torquer to proximal end of delivery wire
2. Rotate torquer with 3-5 complete 360° rotations



3. Check detachment under fluoroscopy
4. Slowly retract delivery wire

Discover our full peripheral embolization portfolio



See the device manual for detailed information regarding the instructions for use, indications, contraindications, warnings, precautions, and potential adverse events. For further information, contact your local Medtronic representative and/or consult the Medtronic website at medtronic.eu.