

Medtronic

Percept™ PC neurostimulator
with BrainSense™ technology

Treatment as
unique as you

**For DBS
Therapy**





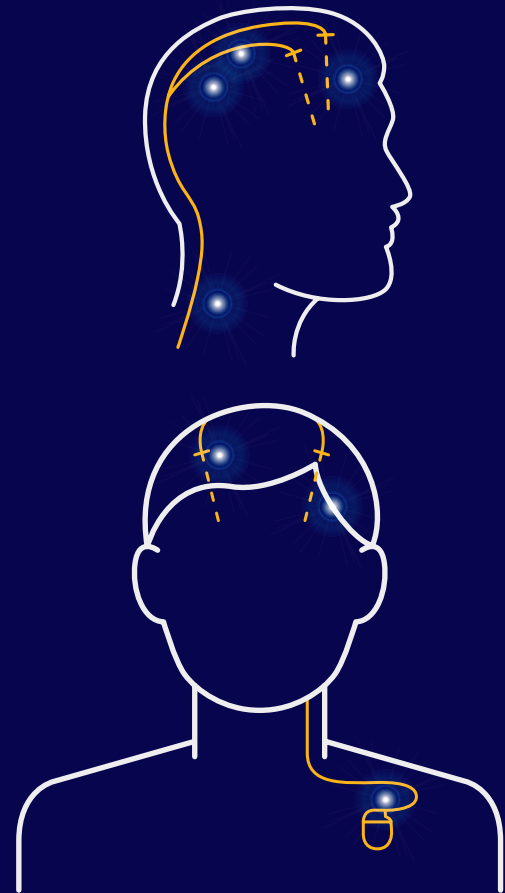
Be more you with DBS Therapy

Medtronic is dedicated to helping people live their best lives. And for decades we've partnered with doctors to help alleviate pain, restore health, and extend life. Our new deep brain stimulation (DBS) device continues that mission.

For many people with Parkinson's disease, essential tremor, dystonia, or epilepsy, **DBS may make a difference when even small tasks have become challenging.*** DBS has helped some people continue working, care for their families, return to favourite activities, and experience the joy of doing the simplest things in life once again.

DBS uses a small pacemaker-like device, placed under the skin of the chest, to send electrical signals through very thin wires (leads) to an area in the brain related to the symptoms of your condition.

* Schuepbach WMM, Rau J, Knudsen K, et al. Neurostimulation for Parkinson's Disease with Early Motor Complications. EARLYSTIM Study. New England Journal of Medicine. 2013;368:610-622.



Personalise your therapy

– get a sense of what's possible

BrainSense™ technology

The Percept™ PC neurostimulator features BrainSense™ technology. This innovative technology captures brain signal data direct from your implanted leads. It then stores the data, so your physician can access it.*

Using this data, your physician may adjust your settings – personalising your therapy for the best possible outcome.**

As new features are added to the technology, you may not need to get a new device. They can simply be applied to your neurostimulator through software on your physician's clinician programmer.

This can enable you to continue to receive the latest innovations from Medtronic.

Digital diary

The neurostimulator is used with an intuitive patient programmer that enables you to track your events, such as when you took medication. It can eliminate the need to carry a notebook or diary.

Your doctor can see the events you've been logging at your next appointment via the clinician's programmer. This information may help your doctor deliver treatment that's as unique as you.

*Signal may not be present or measurable in all patients.

**Clinical benefits of brain sensing have not been established.

DBS clinician programmer



DBS patient programmer



SenSight™ directional leads

Engineered for your comfort

The Percept™ PC neurostimulator is designed to provide you with more comfort.*



.....▶ **Sleek, curved design**

20%

Smaller than
previous- generation
Activa™ PC**

20%

Thinner than
previous- generation
Activa™ PC***

*NDHF1550-188790 Percept™ PC (model B35200) INS Dimensional Analysis Report, v2.0 August 2019.

**In overall device volume.

***Refers to case thickness.

Designed to last longer – and keep you informed

The Percept™ PC neurostimulator is smaller and features a battery that lasts longer.*

You can check how much battery life is left on your device at any time, so you and your doctor will know when to schedule an appointment to replace your neurostimulator. The battery information is available on the easy-to-use patient programmer as well as on your clinician's programmer.



Real-time
estimation of
battery life**

>5 years

Battery life***

*When compared to the previous generation Activa™ PC device. When configured with equivalent settings and no sensing in use.

**Based on current actual battery level and therapy settings from last seven days.

***For median energy use in DBS for patients with Parkinson's disease, with moderate (up to two months per year) BrainSense™ technology usage.

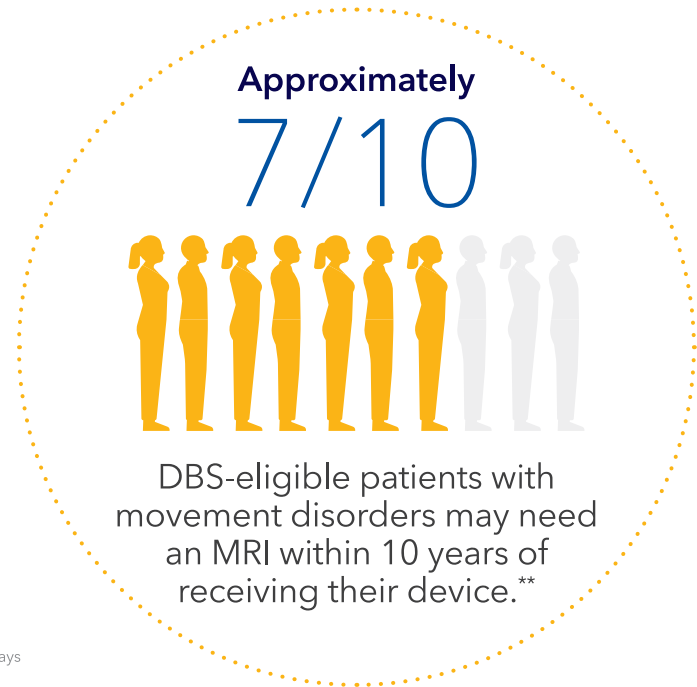
You deserve options – now and in the future

Medtronic is committed to ensuring you have safe access to cutting-edge diagnostic imaging technology. That includes MRI. MRI is short for Magnetic Resonance Imaging, and it's a non-invasive way to examine organs, tissues, and the skeletal system. MRI is used to diagnose causes of common medical conditions of the heart, brain, and spine. You may need an MRI in the future.

Percept™ PC neurostimulator is the first and only device to have full-body MR Conditional* access anywhere on the body for both 1.5T and 3T MRI scans.

*Medtronic DBS systems are MR Conditional, which means they are safe for MRI scans only under certain conditions. If the conditions are not met, the MRI could cause tissue heating, especially at the implanted lead(s) in the brain, which may result in serious and permanent injury or death. Before having an MRI, always talk with the doctor who manages your DBS therapy to determine your eligibility and discuss potential benefits and risks of MRI. For further information, please call Medtronic at +44 (0) 1923 205101.

**Falowski S, Safriel Y, Ryan MP, Hargens L. The rate of magnetic resonance imaging in patients with deep brain stimulation. Stereotact Funct Neurosurg. 2016; 94(3):147-153.



Expanded access to MRI – now even easier

Getting an MRI is now even easier for you. Simply check your patient programmer for compatibility and put the device into MRI mode. Because your patient device can perform a check before your scan, you may not need to schedule a doctor visit, and **you may even be able to leave your stimulation on during the MRI scan.**



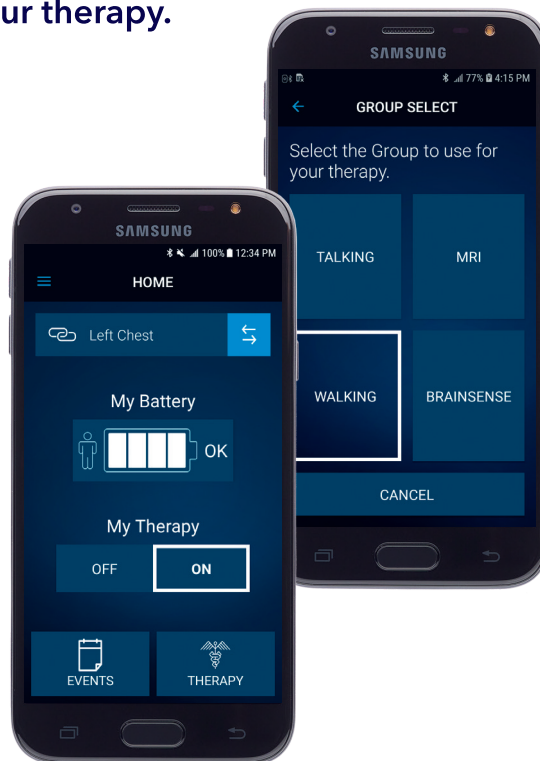
Simple. Personal. Smart.

The DBS patient programmer is enhanced so you can more easily and conveniently manage your therapy.

Easy-to-adjust stimulation options

You may also be able to adjust therapy throughout your day with options programmed by your doctor.

Your doctor can create preset stimulation for up to four types of groups – such as walking, sleeping, and talking. Simply choose which preset stimulation you want for the activity you're doing.



Percept™ PC neurostimulator with BrainSense™ technology

Personalise your therapy - get a sense of what's possible

For the first time ever, physicians can deliver truly data-driven, personalised therapy that fits the needs of today's patients.

Expand access to MRI - now even easier

Getting an MRI is now even easier for you. Simply check your patient programmer for compatibility and put the device into MRI mode.



Designed to last longer - and keep you informed

The Percept™ PC neurostimulator is smaller and features a battery that lasts longer.¹

Engineered for your comfort

The Percept™ PC neurostimulator is designed to provide you with more comfort.²

Simple. Personal. Smart.

The DBS patient programmer is enhanced so you can more easily and conveniently manage your therapy.

¹ When compared to the previous generation Activa™ PC device.

² NDHF1550-188790 Percept PC (model B35200) INS Dimensional Analysis Report, v2.0 August 2019.

A global leader in medical technology, Medtronic continually seeks ways to improve the lives of patients. So you can be assured our DBS technology is backed by decades of research, innovation, and experience. We began developing DBS therapy in 1987, and our devices have been implanted in more than 175,000 patients worldwide.*

Learn more about DBS therapy at [medtronic.co.uk/dbs](https://www.medtronic.co.uk/dbs).

* Number of unique patients implanted (i.e."new patients") as of January 2020

Brief Statement:

Information contained herein does not replace the recommendations of your healthcare professional. See the device manual for detailed information regarding the instructions for use, indications, contraindications, warnings, precautions, and potential adverse events. For further information, contact your Health Care Professional.

Medtronic

Medtronic International Trading Sarl
Route du Molliau 31
Case postale
1131 Tolochenaz
Switzerland
Tel: +41 (0) 21 802 70 00
Fax: +41 (0) 21 802 79 00

UC202002878aEE © 2022 Medtronic.
All Rights Reserved. Printed in Europe.

[medtronic.eu](https://www.medtronic.eu)