

# Medtronic

## SureTune™ 4 software patient-specific visualisation tool

Visualise truly  
personalised therapy

### Automatic lead localisation –

Automatically position and orient a lead model within a patient's post-op CT or O-arm™ image.

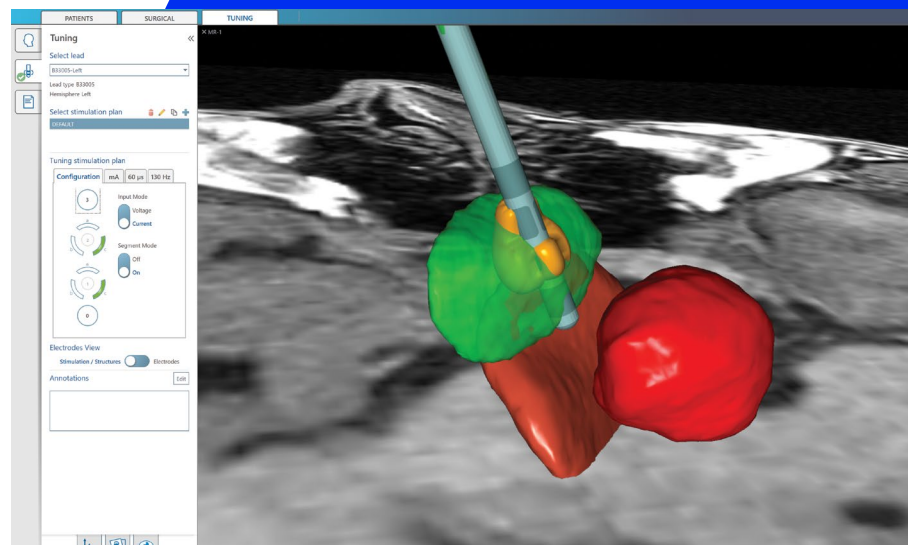
### Patient-specific anatomy segmentation tools –

Use the Bardinet algorithm to automatically fit the YeB atlas to a patient MRI T1 or T2 image. Manual segmentation tools allow further refinement if needed.

### Seamless integration –

SureTune™ 4 software patient-specific anatomy and lead location and orientation can be pulled into the DBS Clinician Programmer for a visually informed programming session, helping to streamline your directional lead programming workflow.

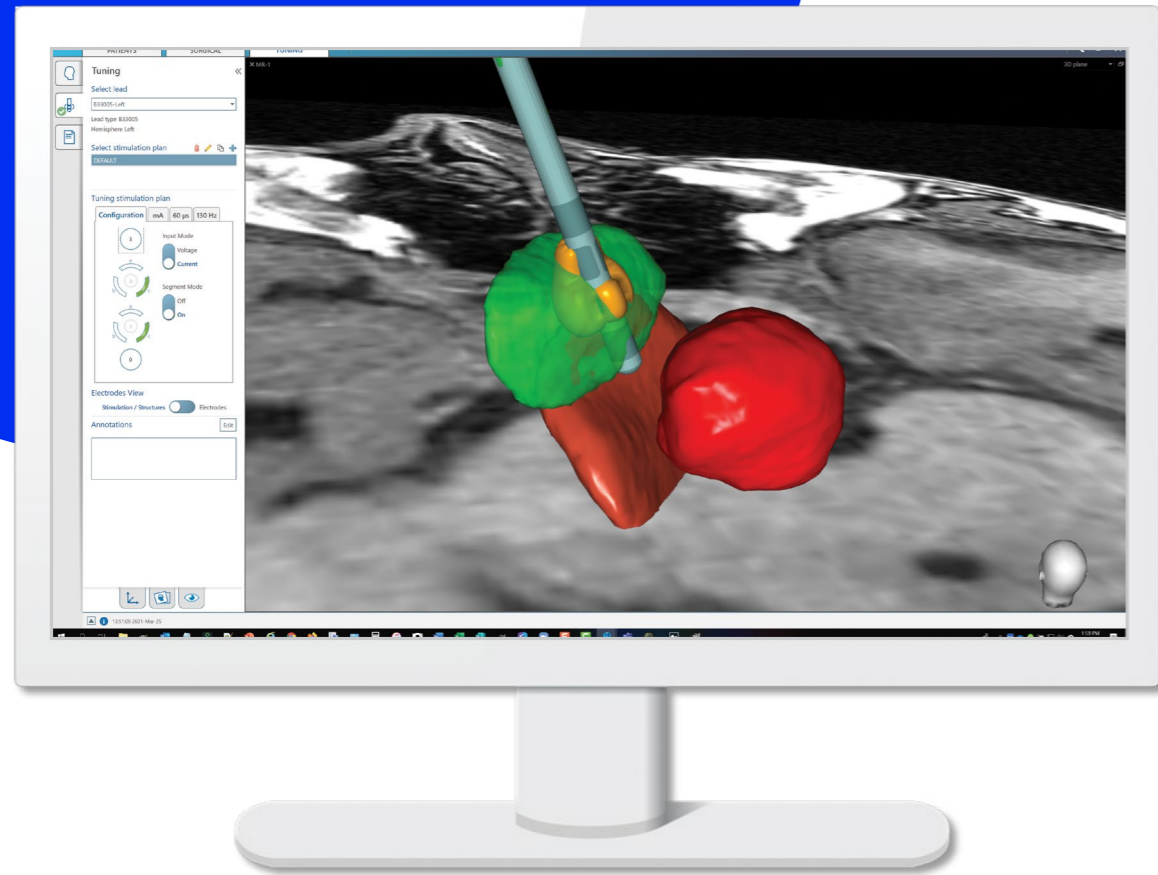
**Fine-tune therapy** with anatomical segmentation and automatic lead orientation.



**Use imagery to educate** patients about the programming process so they're more informed about their therapy.

# Configured around you and your team

SureTune™ 4 software can run on a standalone computer or in a client-server configuration.



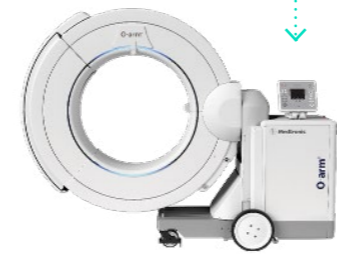
# Surgical synergy, integrated workflow

We offer solutions for your DBS procedure from planning to programming. SureTune™ 4 software extends our fully integrated DBS portfolio to provide workflow efficiencies, using imaging as a common language to provide a more meaningful transfer of data from the implanting team to the patient management team.

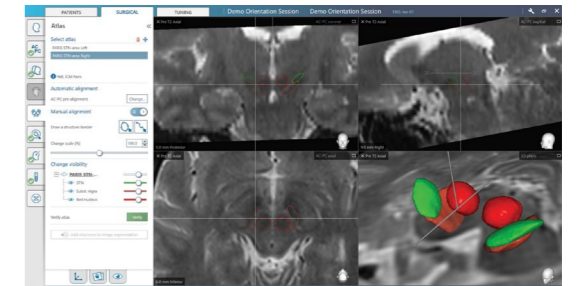


Implant with Percept™ neurostimulators and SenSight™ directional leads

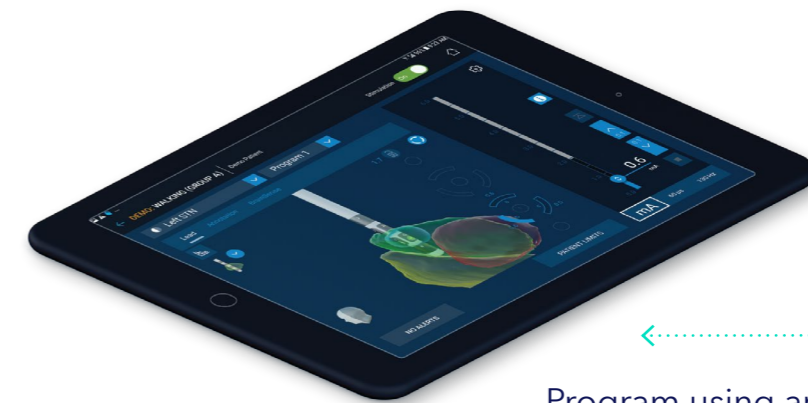
Plan with StealthStation™ S8 / S7 surgical navigation system



Obtain lead position scan with O-arm™ imaging system



Import Stealth sessions into SureTune™ 4 software



Program using anatomical information from SureTune™ 4 software



## Standalone configuration

- Runs as a Windows application
- Is able to communicate with Clinician Programmer if configured
- Is able to communicate with PACS if configured
- Is able to import from StealthStation™ S8/S7 Surgical Navigation System



## Client-server configuration

- Includes all standalone configuration features
- Automatically synchronises patient data between the client and the server
- Simplifies the sharing of patient data between multiple clinicians

## Brief Statement:

This material should not be considered the exclusive source of information, it does not replace or supersede information contained in the device manual(s).

Please note that the intended use of a product may vary depending on geographical approvals.

See the device manual(s) for detailed information regarding the intended use, the implant procedure, indications, contraindications, warnings, precautions, and potential adverse events.

For a MRI compatible device(s), consult the MRI information in the device manual(s) before performing a MRI.

If a device is eligible for eFU usage, instructions for use can be found at Medtronic's website [manuals.medtronic.com](https://manuals.medtronic.com).

Manuals can be viewed using a current version of any major internet browser. For best results, use Adobe Acrobat® Reader with the browser. Medtronic products placed on European markets bear the CE mark and the UKCA mark (if applicable).

For any further information, contact your local Medtronic representative and/or consult Medtronic's websites.

Go beyond with the SenSight™ directional lead – part of Medtronic's most advanced DBS platform. [Discover more at Medtronic.eu/sensight](https://www.Medtronic.eu/sensight)

## Medtronic

### Europe

Medtronic International Trading Sàrl.  
Route du Molliau 31  
Case postale  
CH-1131 Tolochenaz  
[www.medtronic.eu](https://www.medtronic.eu)  
Tel: +41 (0)21 802 70 00  
Fax: +41 (0)21 802 79 00

### United Kingdom/Ireland

Medtronic Limited  
Building 9  
Croxley Park  
Hatters Lane  
Watford  
Herts WD18 8WW  
[www.medtronic.co.uk](https://www.medtronic.co.uk)  
Tel: +44 (0)1923 212213  
Fax: +44 (0)1923 241004

[medtronic.eu/SenSight](https://www.medtronic.eu/SenSight)

©2024 Medtronic. Medtronic, Medtronic logo, and Engineering the extraordinary are trademarks of Medtronic. All other brands are trademarks of a Medtronic company. 2024-dbs-suretone-hcp-sell-sheet-en-gb-emea-15121227