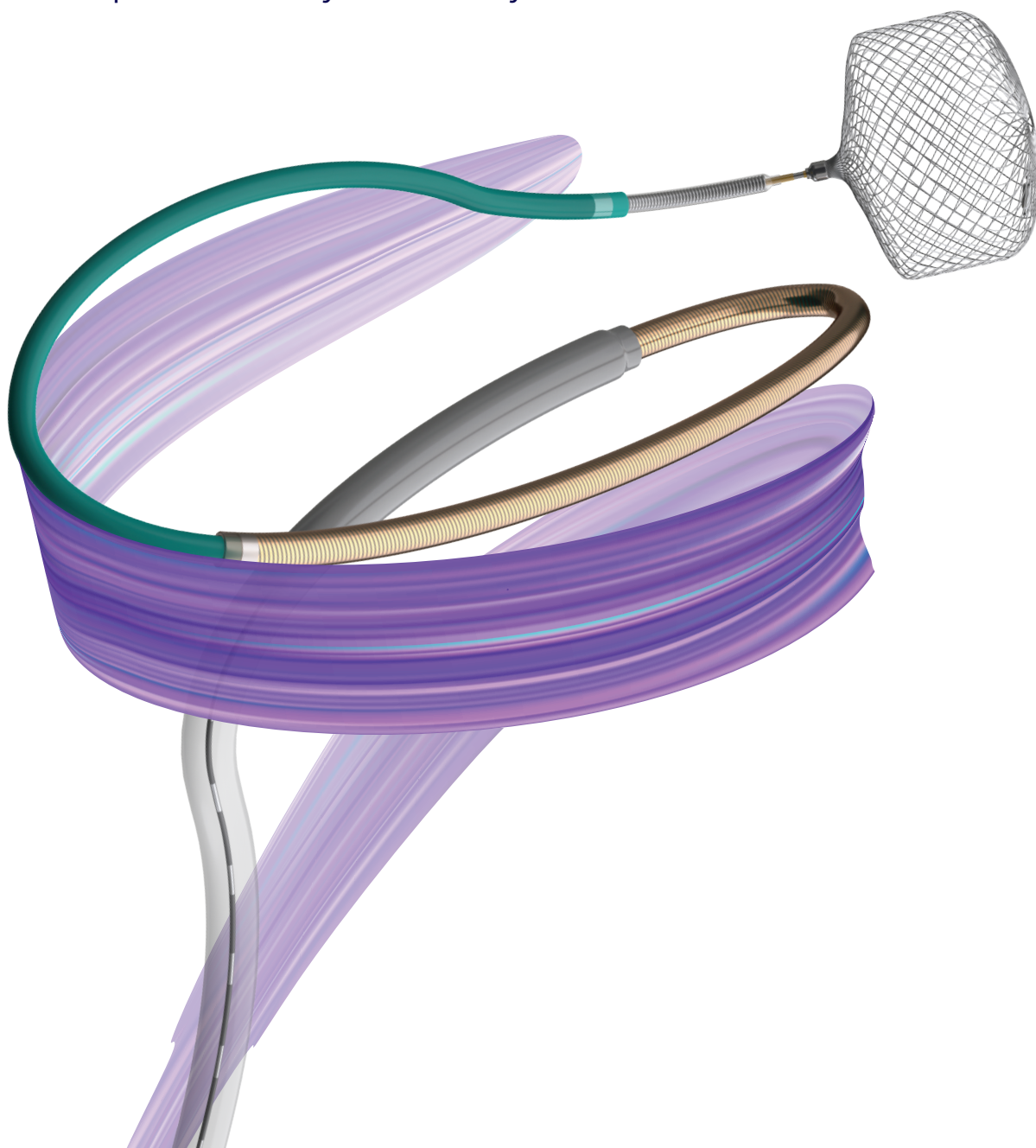


Delivering a new standard

Artisse™

Intrasaccular Device

Advancing innovation with a single, atraumatic, highly conformable device that provides confidence, control, predictability and safety.



The Artisse™ Intrasaccular Device provides you with confidence, control, predictability and safety for efficacious outcomes.¹⁶

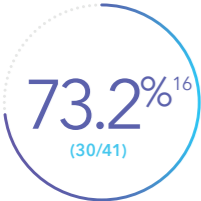
Innovation

Advancing our legacy of haemorrhagic innovation: With advanced atraumatic open tip design, conformability, flared shape and proximal flow divider profile to remodel flow.^{1, 3, 4, 5, 10, 11, 13, 14, 15}

- **Conformability:** Unique construction and low stiffness modulus conforms to the aneurysm and neck.^{14, 15}
- **Control:** All sizes through an 021 microcatheter with low handling forces and highly rated control.^{13, 14, 15}
- **Ease of use:** Leverage conformability and multiple modalities of sizing** working together for a personalized fit for patients.^{4, 5, 14, 15, 17} INSPIRE-A demonstrated a 96.9% patient-level implant success rate with a mean cumulative fluoro time of 24.7 mins.¹⁶

Efficacy and Safety

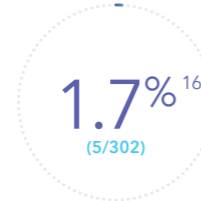
Raising the bar with meaningful Raymond Roy class 1 outcomes. Achieving high complete occlusion rates and low adverse events, demonstrated by the INSPIRE-A real world multi-center registry.¹⁶



Complete occlusion in INSPIRE-A (30/41, excluding cannot determines. 60% (30/50, including cannot determines)



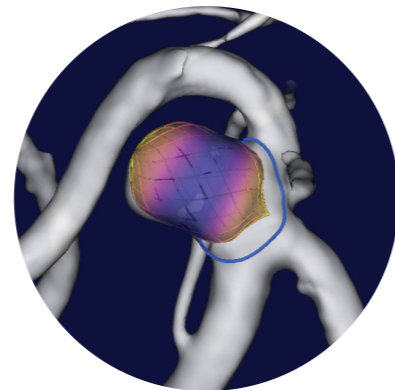
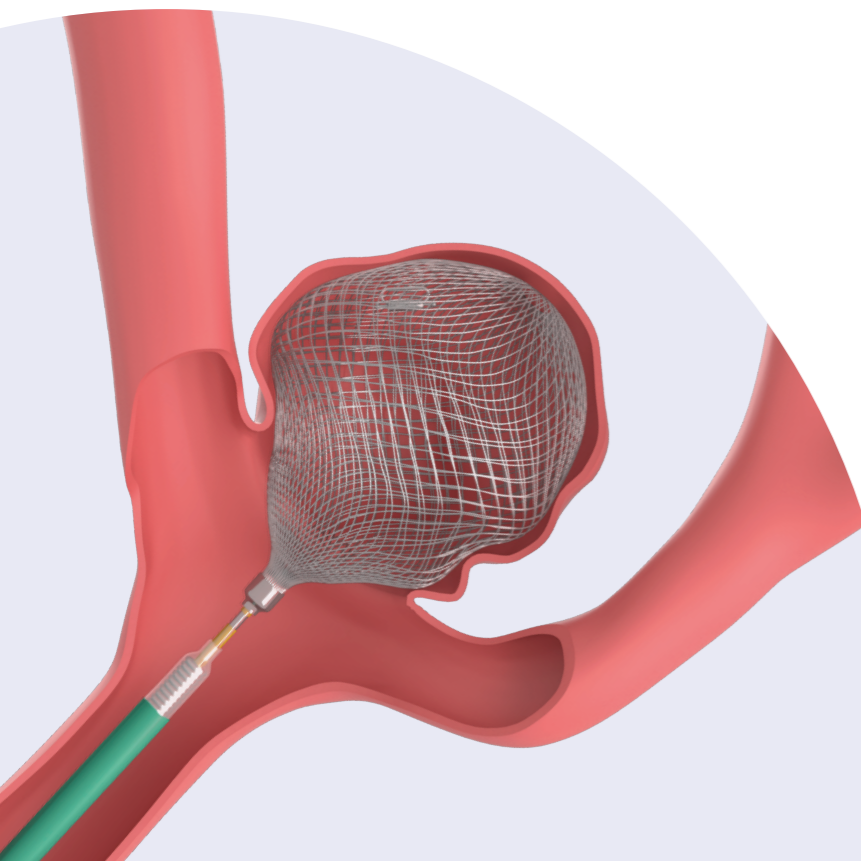
Recurrence rate¹⁸



Major stroke in treated vascular territory

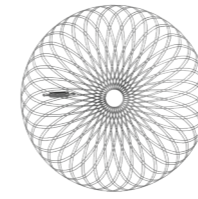


Mean cumulative fluoro time



As unique as each patient: 3D simulation (where available) to assess apposition, compression, device deformation and orientation.¹⁷

*2-D sizing chart and 3D-Simulation



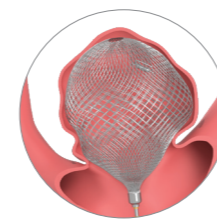
Atraumatic open distal tip
Helps protect the dome during deployment.^{4, 5, 10}

Dual-layer mesh basket
Double layer of 144 drawn filled tube (DFT) wires form a basket that provides a balance of radial force and conformability. Platinum core nitinol wires provide complete implant visibility.^{1, 10, 13}

Flared shape
Provides a balance of radial force and stability for optimal implant fit in wide-necked aneurysms.^{1, 3, 10, 11}

Proximal marker
Platinum-iridium alloy marker for added visibility.^{5, 10}

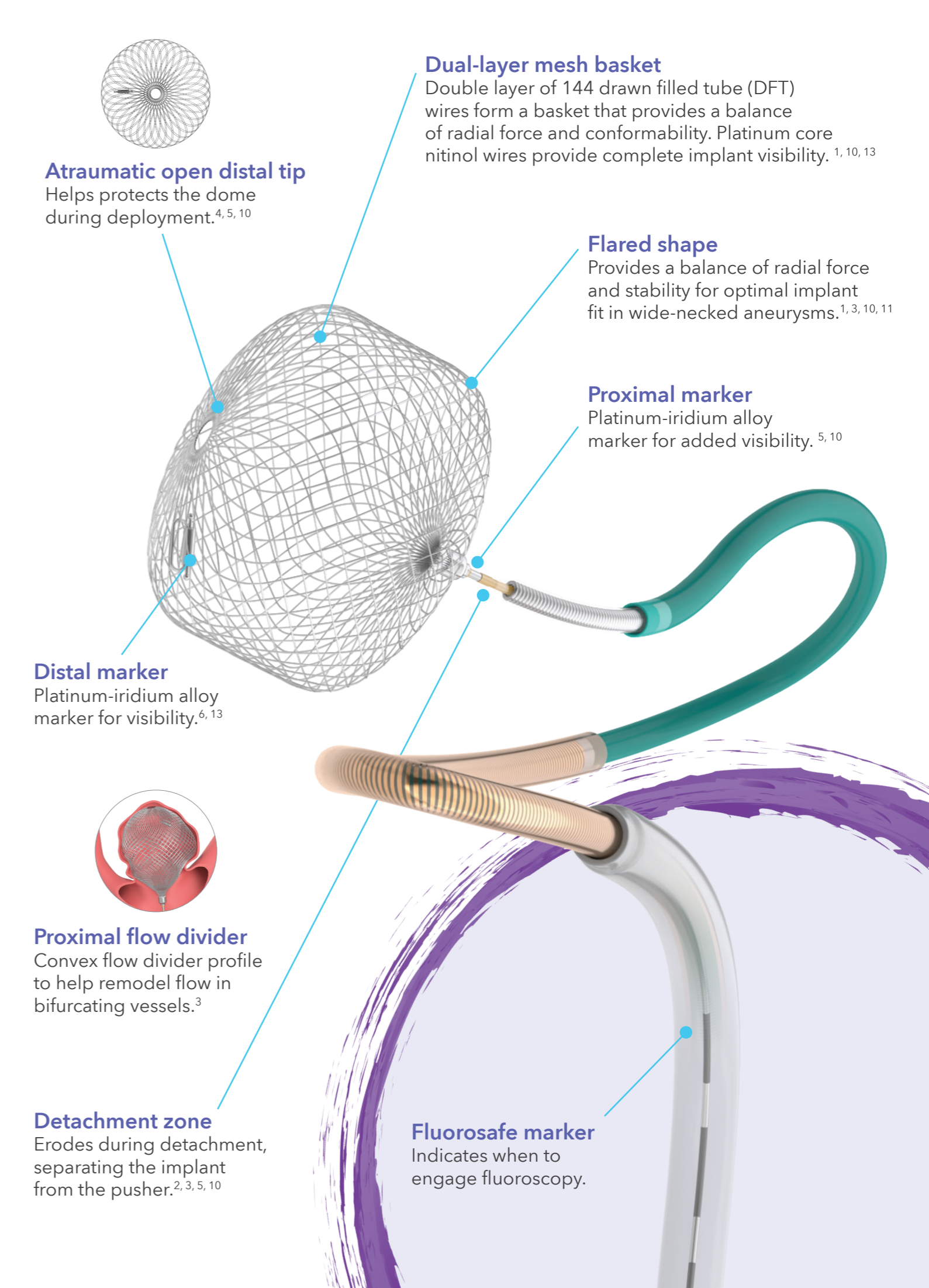
Distal marker
Platinum-iridium alloy marker for visibility.^{6, 13}



Proximal flow divider
Convex flow divider profile to help remodel flow in bifurcating vessels.³

Detachment zone
Erodes during detachment, separating the implant from the pusher.^{2, 3, 5, 10}

Fluorosafe marker
Indicates when to engage fluoroscopy.



Artisse™ Intracascular Device

| CFN | (W x H) mm | CFN | (W x H) mm | CFN | (W x H) mm |
|--------------------|------------|--------------------|------------|-----------------------------------|------------|
| ISF-045-030 | 4.5 x 3.0 | ISF-060-040 | 6.0 x 4.0 | ISF-075-040 | 7.5 x 4.0 |
| ISF-045-040 | 4.5 x 4.0 | ISF-060-050 | 6.0 x 5.0 | ISF-075-050 | 7.5 x 5.0 |
| ISF-050-030 | 5.0 x 3.0 | ISF-065-030 | 6.5 x 3.0 | ISF-080-040 | 8.0 x 4.0 |
| ISF-050-040 | 5.0 x 4.0 | ISF-065-040 | 6.5 x 4.0 | ISF-080-050 | 8.0 x 5.0 |
| ISF-055-030 | 5.5 x 3.0 | ISF-065-050 | 6.5 x 5.0 | Artisse™ Detachment Device | |
| ISF-055-040 | 5.5 x 4.0 | ISF-070-030 | 7.0 x 3.0 | ISD-5-PK (Pack of 5) | |
| ISF-055-050 | 5.5 x 5.0 | ISF-070-040 | 7.0 x 4.0 | Rebar™ 18 Micro Catheter | |
| ISF-060-030 | 6.0 x 3.0 | ISF-070-050 | 7.0 x 5.0 | 105-5081-153 | |

References

1. Data on file D00360690 Artisse 2 Design Verification Implant Shape and Chronic Outward Force Report. 23-Nov-2020
2. Data on file TR-NV12721. Artisse™ 021 Detachment and Kink Resistance Study. 27- May-2016
3. Data on file D00662662 Artisse 2 Rabbit Vessel Pouch Aneurysm GLP Animal Study Design Validation Report. Testing performed with 14 rabbits with a preexisting surgically created elastase induced aneurysm. 06-Nov-2023
4. Data on file D00357033 Artisse 2 Intracascular Device Design Validation Report. 17-Nov-2020
5. Data on File TR-NV12962 Artisse-021 System Design Validation Report. 19-Jul-2016
6. Data on File DWGS31529 Distal Marker Band. 23-Apr-2019
7. Data on file DWGS31527 Inner Marker Band. 23-Apr-2019. DWGS31528 Outer Marker Band. 23-Apr-2019
8. Data on file DWGS31528 Outer Marker Band. 23-Apr-2019
9. Data on File DWGS31525 Wire for Implant, Artisse. 23-Apr-2019
10. Data on File M810805ADOC1 Artisse Implant Subassembly. 18-Sep-2023
11. Data on File D00789514 Artisse 2 25% Compression Radial Force Design Verification Testing Report. 02-Sep-2022
12. Artisse Instructions For Use M012064CDOC2_C
13. Competitive testing report, intracascular device competitive evaluation. Data on file D01177929 Rev A
14. Data on File Artisse Intracascular Device Conformability and Control Physician Survey
15. NeuroNews Physician Interview on Clinical Perspectives on Artisse. Advertorial May 2024, Issue 54
16. Artisse INSPIRE-A, 12M Safety and Efficacy Data as presented by Prof Killer at LINNC Paris 2025. (Interim data. Enrollment and follow-up ongoing. This is not the final data set.)
17. Sim&Size v1.2 User manual
18. Recurrence rate definition: Evidence of change in aneurysm occlusion status from complete occlusion to residual aneurysm/neck on DSA imaging compared to previous DSA imaging. The assessment is based on medical judgement and should only be done if there are 2 DSA imaging to compare against.

Brief statement:

This material should not be considered the exclusive source of information, it does not replace or supersede information contained in the device manual(s).

Please note that the intended use of a product may vary depending on geographical approvals. See the device manual(s) for detailed information regarding the intended use, the (implant) procedure, indications, contraindications, warnings, precautions, and potential adverse events. For a MRI compatible device(s), consult the MRI information in the device manual(s) before performing a MRI. If a device is eligible for eIFU usage, instructions for use can be found at Medtronic's website manuals.medtronic.com

Manuals can be viewed using a current version of any major internet browser. For best results, use Adobe Acrobat® Reader with the browser. Medtronic products placed on European markets comply with EU and UK legislation (if applicable) on medical devices.

For any further information, contact your local Medtronic representative and/or consult Medtronic's websites.

Medtronic

Europe

Medtronic International
Trading Sàrl.
Route du Molliau 31
CH-1131 Tolochenaz
Tel: +41 (0)21 802 70 00
Fax: +41 (0)21 802 79 00

[medtronic.eu](https://www.medtronic.eu)

© 2026 Medtronic. Medtronic, Medtronic logo, and Engineering the extraordinary are trademarks of Medtronic. ™* Third-party brands are trademarks of their respective owners. All other brands are trademarks of a Medtronic company. 2025-artisse-brochure-en-gb--20273524