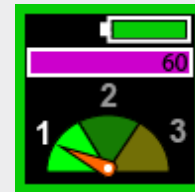


Medtronic

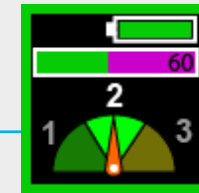
# More information. Less guessing.

The Signia™ stapler provides real-time feedback when used with all Tri-Staple™ reloads. That means you get valuable information to help you make informed decisions<sup>1,†</sup> – and much more.

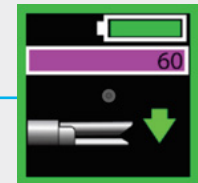
Here are just a few examples of what real-time feedback can bring to your procedures.



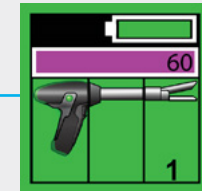
Visual cues that show forces on tissue during clamp and correlate to the tactile feedback of a manual stapler.<sup>1,†</sup> This can help you **assess load selection.**<sup>1,‡,¶</sup>



A gauge that measures forces during firing<sup>2-4</sup> – to **optimize staple formation** in challenging applications.<sup>2,3,§</sup>



A built-in user's guide for **simplified setup**<sup>5</sup>



Battery and system status, **fire-ready indicators**, and more



# See the feedback. Get more consistent staple lines.<sup>2-4,§,††</sup>

The Signia™ stapler uses tissue sensing<sup>2-4,§</sup> to provide real-time feedback upon clamping and firing through tissue.<sup>6</sup>

**The Signia™ stapler adjusts firing speeds across tissue types to optimize staple formation in variable tissue.<sup>2,3,§</sup> And it tells you when it does.<sup>6</sup>**

**Manual staplers don't do that. Neither do fixed-speed powered staplers. It's what makes the Signia™ stapler smart.**

Learn more about the benefits of real-time feedback and the Signia™ stapler. Contact your sales rep.

† Bench test results may not necessarily be indicative of clinical performance. ‡ P < 0.001. § Preclinical results may not correlate with clinical performance in humans. ¶ 9 out of 10 surgeons surveyed after use agreed. †† Compared to manual and fixed speed powered staplers. 1. Based on internal test report #RE00055515, Surgeon evaluation testing Signia™ stapling system sensing technology and real-time feedback. Aug. 4, 2016. 2. Based on internal test report #R2146-173-0, ASA verification testing with slow speed force limit evaluation. 2015. 3. Based on internal test report #R2146-151-0, Powered stapling firing speed DOE analysis and ASA parameters. 2015. 4. Based on internal report #RE00218740, Signia™ stapling adaptive firing technology data calculations and references. Aug. 7, 2019. 5. Based on internal test report #RE00024826, Signia™ stapling system summative usability report, rev A. January 2016. 6. Signia™ stapler [user manual]. Mansfield, MA: Medtronic; 2016.

## Medtronic

IMPORTANT: Please refer to the package insert for complete instructions, contraindications, warnings and precautions.

© 2023 Medtronic. All rights reserved. Medtronic, Medtronic logo and Further, Together are trademarks of Medtronic. All other brands are trademarks of a Medtronic company. EMEA-ST-2200009-signia-real-time-feedback-brochure-en-emea-8036729

[medtronic.com/covidien/uk](https://www.medtronic.com/covidien/uk)

